



Launceston to Hobart Yacht Race 2023

Weather Forecast

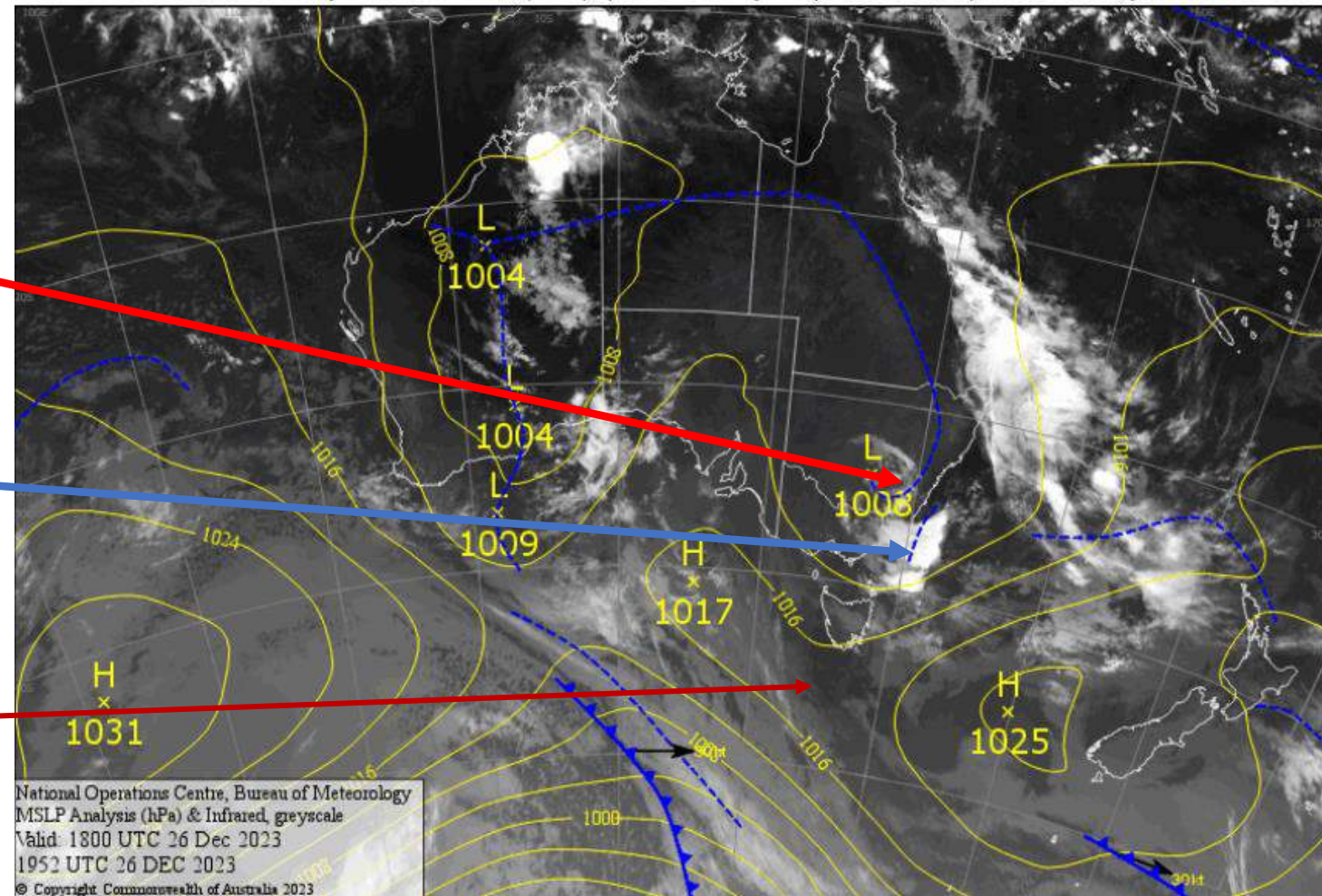
Issued by Kenn Batt at 0800hr 27/12/2023

Most products used in this briefing have been sourced from the Bureau of Meteorology and the CSIRO

Latest Surface Isobaric Chart

A weakening low over southern inland New South Wales has bands of cloud spiralling around it. A thick cloud band with embedded convection extends down the Queensland coast and out over the Tasman Sea. There is also extensive thunderstorm activity neighbouring a trough off the South Coast of New South Wales.

A weakening ridge of high pressure lies to the west and southeast of Tasmania.

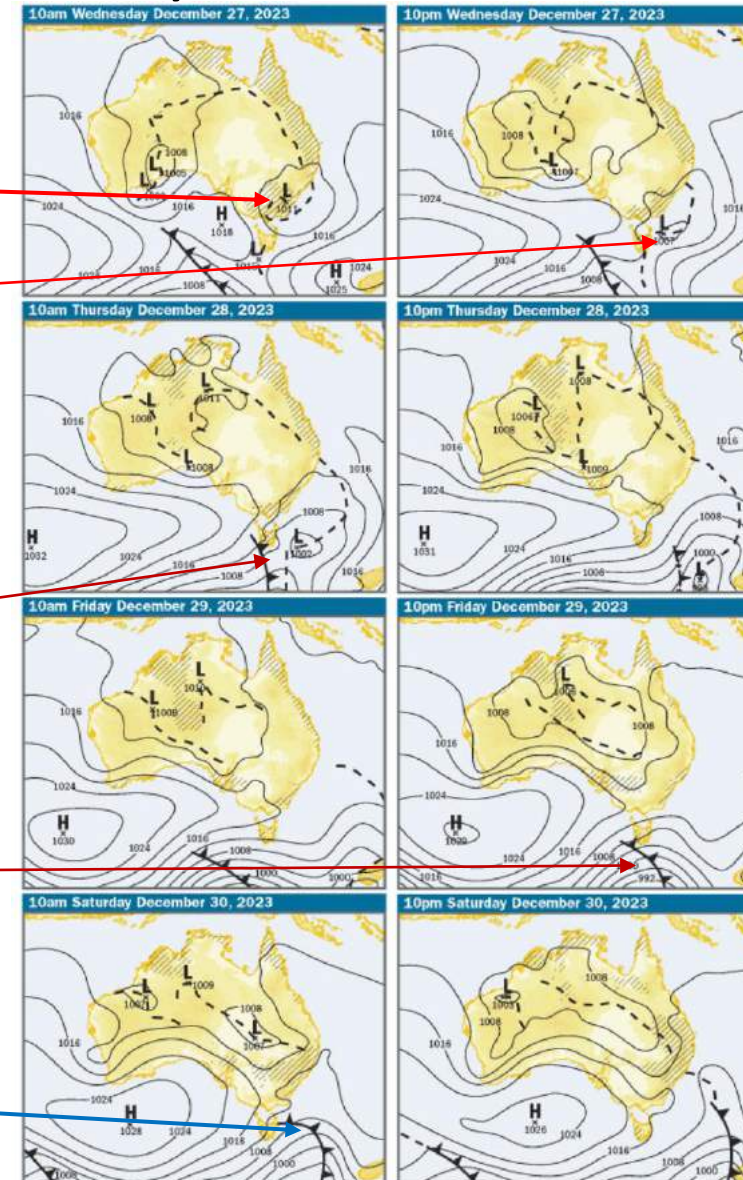


Forecast Charts for next few days

The low will move off the NSW coast during today. It's expected to move southwards to be near Flinders Island by late this evening. It's forecast to weaken. Some low pressure troughs (dashed lines) are expected in Bass Strait, Tasmania and the Tasman Sea associated with this low.

A cold front will move through Tasmania early on Thursday. This will be followed by another cold front late on Friday.

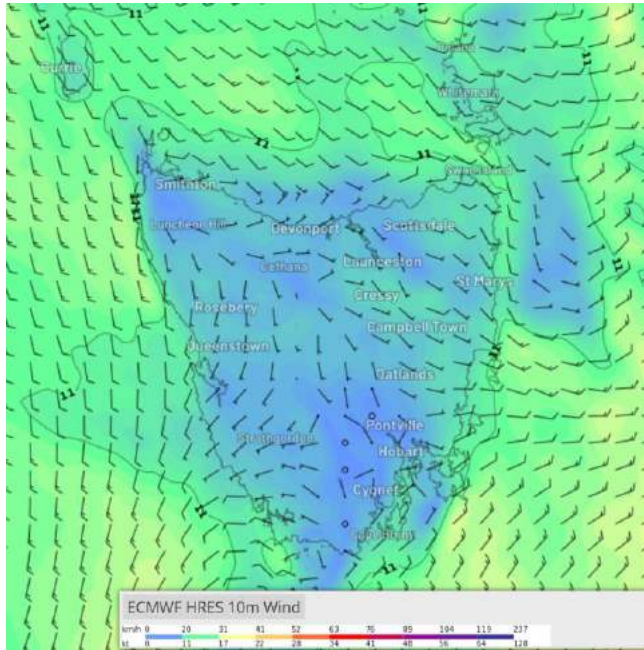
Yet another cold front is expected to move through the State on early Saturday morning.



Forecast Winds, etc

- ECMWF Forecast winds below are courtesy of Weatherzone (subscription service) [Weatherzone Layers](#)
- My current model of choice is the ECMWF model.
- This is shaping up to be a testy race. There will be a lot of parking lots.
- Check out Windy.com for ECMWF and ACCESS models.
- **Update** weather forecasts and **warnings regularly** via the internet and radio sources.
- Timing of weather systems noted in the briefing may change?

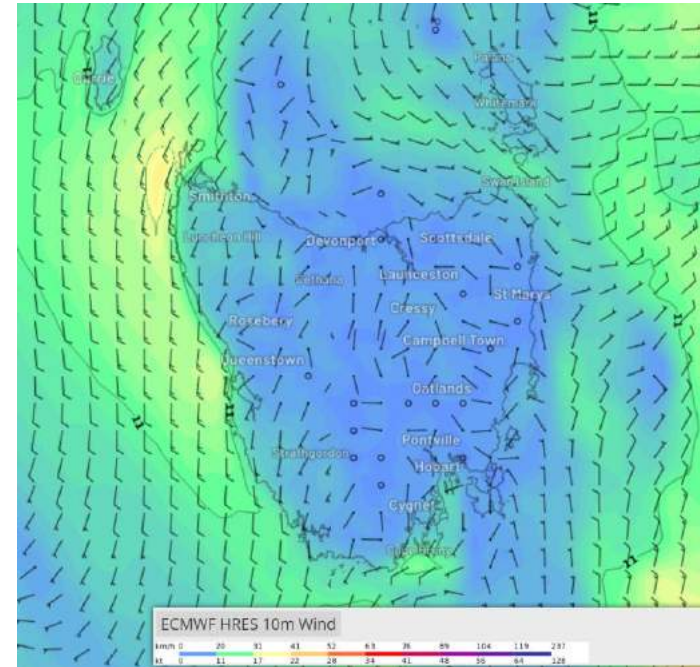
27th December



11am



5pm



11pm

A trough of low pressure lies over E Bass Strait during this morning. It moves westward during the day. Chiefly light E to SE winds, tending variable at times. Winds becoming light to moderate NE/SE in eastern parts. Winds becoming squally and erratic in heavy showers/thunderstorms over short time periods.

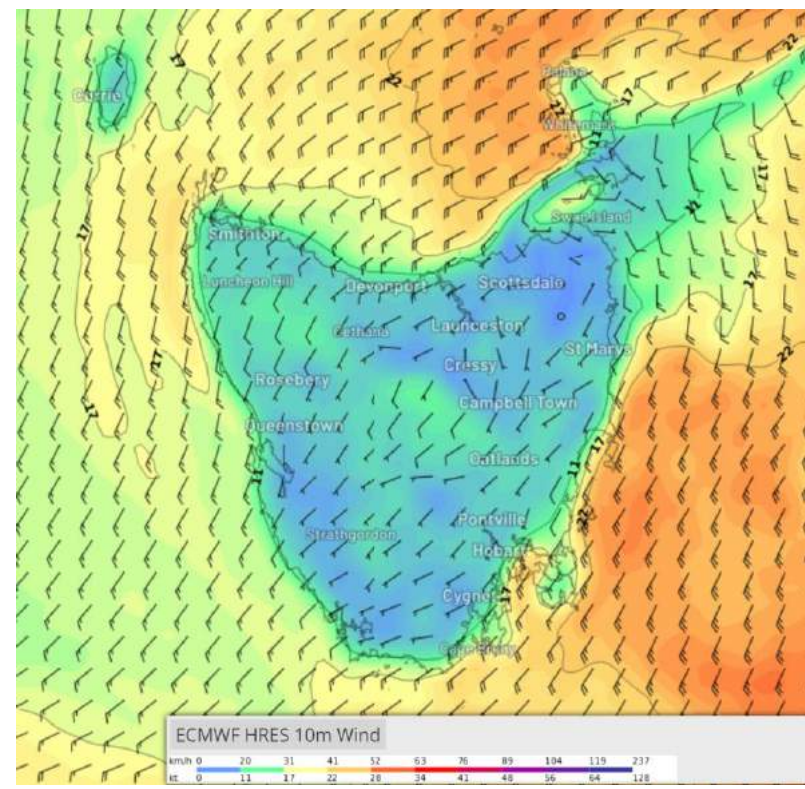
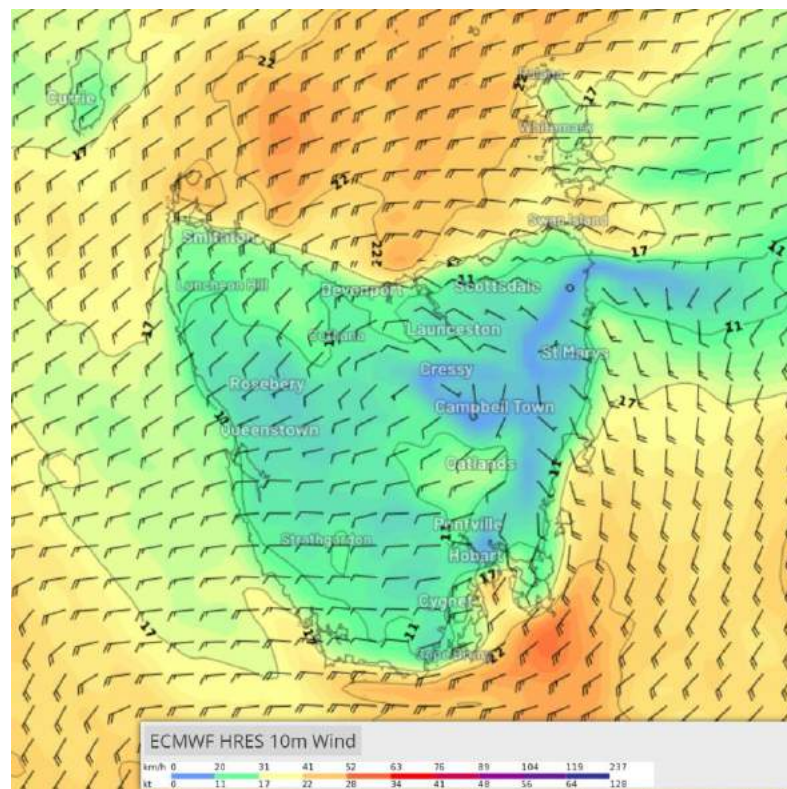
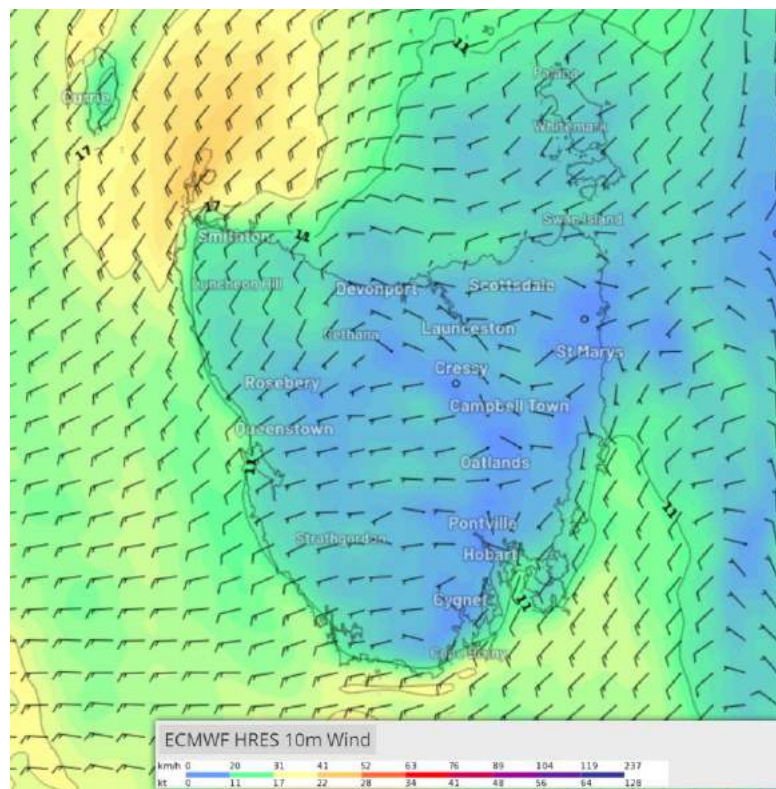
Sea waves: up to 1m (Hsig), higher in gusts/squalls

Swell waves: from E-NE 1 to 2.0m (Hsig) reaching 2.5m (Hsig) at times in far east parts. A S'ly secondary swell to 1.0m (Hsig) developing during the day along the E Tassie coast.

NOTE: Waves can be higher than forecast especially when ocean/tidal currents oppose wind/swell waves

Weather: Cloudy with showers. Chance of thunderstorms.

28th December



8am

2pm

11pm

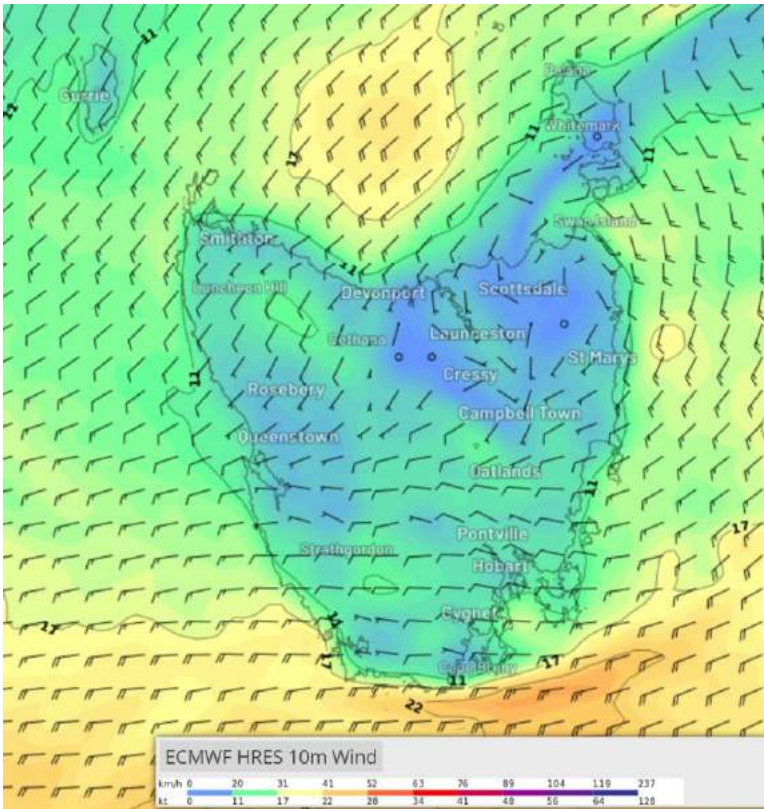
A cold front pushes through Tasmania early (7-9am) on Thursday 28th. **Strong Wind Warning current for N parts of Tassie.** Light and variable winds ahead of front, becoming fresh to strong and gusty W/SW'ly in Bass/Banks Straits behind the front. Winds will tend moderate to fresh (strong at times) and gusty SW-SE along the E Tassie coast during the day. Lighter winds over NE parts.

Sea waves: 1 to 1.5m (Hsig) at first rising 2 to 3m (Hsig) behind the front

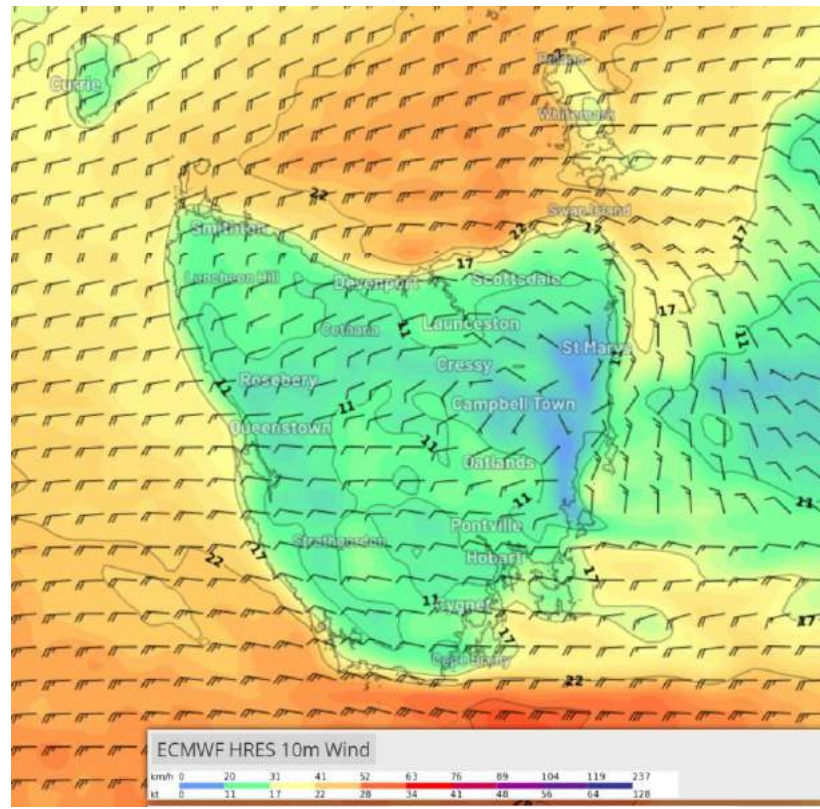
Swell waves: E-NE 1 to 2m (Hsig) NE Tassie, tending S'ly 1 to 2m (Hsig) along the E Tassie coast. A secondary NE swell to 1.5m (Hsig) should also be experienced along E Tassie coast.

Weather: High chance of showers. Low- moderate risk of a thunderstorm.

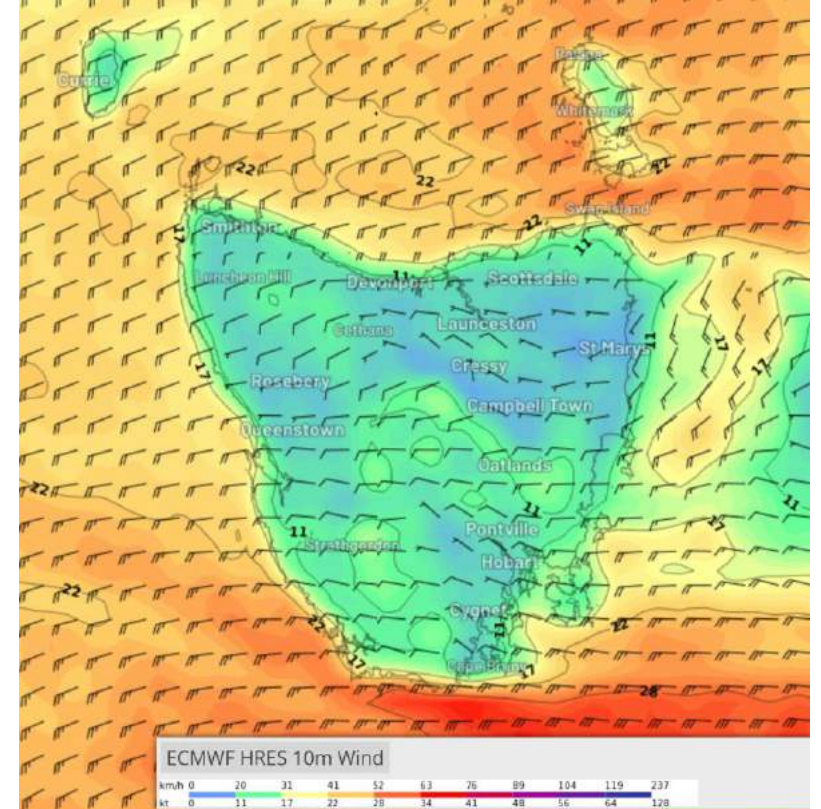
29th December



8am



5pm



11pm

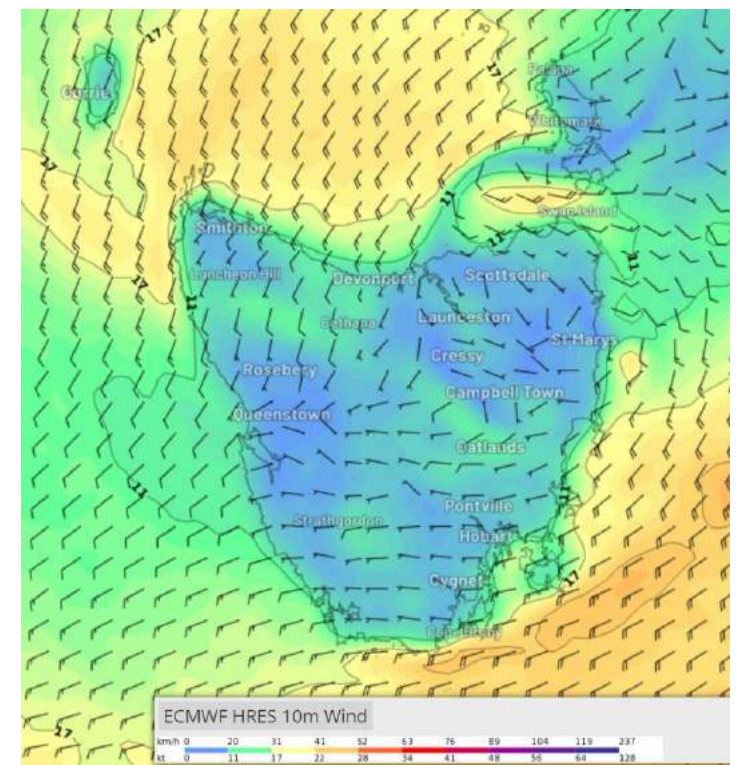
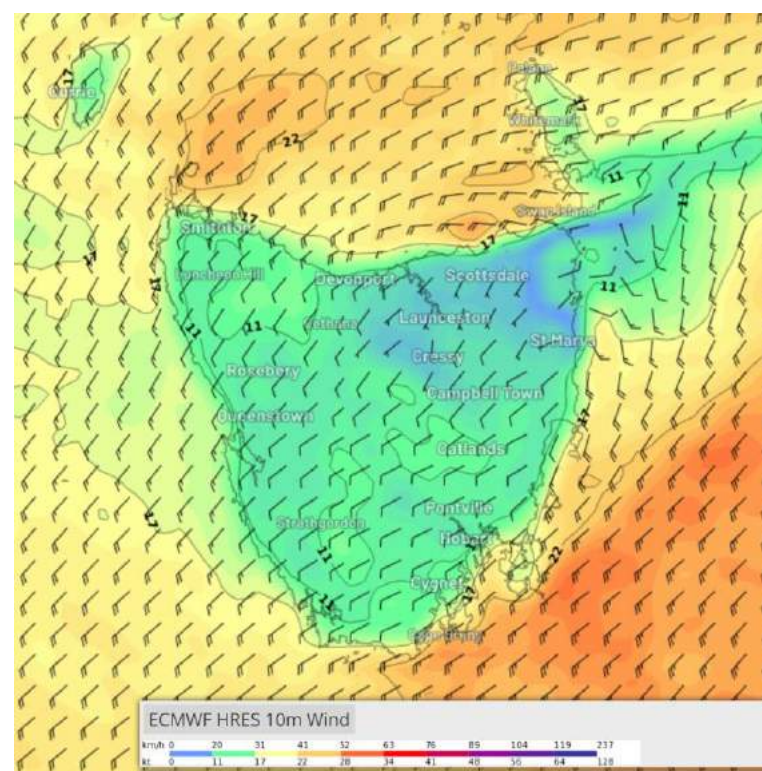
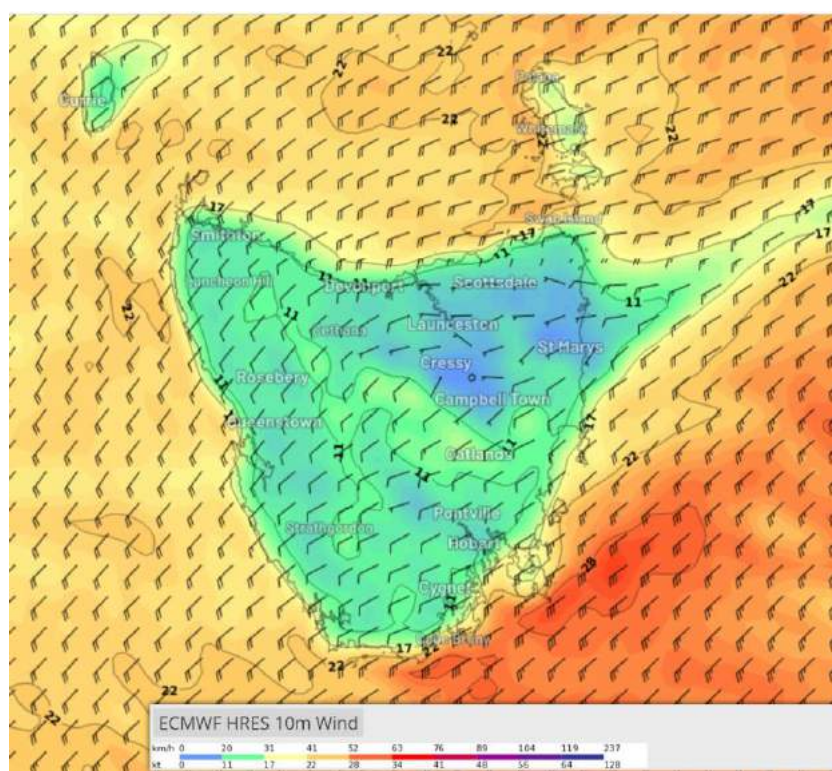
SW/SE winds ease early morning 29th and tend light to moderate NW/SW, even N'ly at times during the day, especially N of Maria Is. Winds freshen from the W/SW generally by late evening as a cold front moves through the State (approx. 10-11pm). But being close to E Tassie coast comes with it problems. Read <https://ryct.org.au/wp-content/uploads/2021/04/25-Tricky-Tassie-Coast-Kenn-Batt-Alasdair-Hainsworth.pdf>. Winds squally and erratic in vicinity of Tasman Island and tending more fickle in the Derwent especially overnight.

Sea waves: up to 1 to 1.5m (Hsig)

Swell waves: from S 1 to 2m (Hsig) with an E'ly to 1.0m (Hsig) secondary swell.

Weather: Partly cloudy. Slight chance of a shower.

30th December



8am

2pm

11pm

A cold front moves through Tasmania early (3-5am) on 30th. This feature will freshen the W/SW flow over the State. The wind direction is expected to tend more southerly along the E Tassie coast and ease during the evening. Winds squally and erratic in vicinity of Tasman Island and tending more fickle in the Derwent especially overnight. Sea waves: up to 1 to 2.0m (Hsig)
Swell waves: from S 1 to 2m (Hsig) with an E'ly to 1.0m (Hsig) secondary swell.
Weather: Partly cloudy. Slight chance of a shower.

Weather forecasts for selected areas

North Tamar

Forecast for the rest of Wednesday



Max **26**

Shower or two.

Chance of any rain: **60%** ■■■■■■■■

Central North area

Partly cloudy. High chance of showers, most likely during this afternoon and evening. The chance of a thunderstorm during this afternoon and evening, possibly severe. Winds south to southeasterly 15 to 25 km/h becoming light in the evening. Daytime maximum temperatures in the low to mid 20s.

Fire Danger - Moderate

Sun protection recommended from 8:50 am to 5:30 pm, UV Index predicted to reach 11 [Extreme]

St Helens

Thursday 28 December



Min **15** Max **22**

Showers increasing.

Possible rainfall: **1 to 10 mm**

Chance of any rain: **90%** ■■■■■■■■

Cloudy. Very high chance of showers, most likely in the afternoon and evening. Light winds becoming southeasterly 15 to 20 km/h in the morning then becoming light in the early afternoon.

Sun protection recommended from 8:40 am to 5:20 pm, UV Index predicted to reach 11 [Extreme]

Friday 29 December



Min **12** Max **23**

Cloudy.

Chance of any rain: **10%** ■■■■■■■■

Cloudy. Light winds becoming north to northwesterly 20 to 30 km/h during the afternoon then tending west to northwesterly during the evening.

Sun protection recommended from 8:40 am to 5:20 pm, UV Index predicted to reach 11 [Extreme]

Maria Island

Thursday 28 December



Min 15 Max 21

Shower or two.

Possible rainfall: 0 to 1 mm

Chance of any rain: 50% ■■■■■■■■■■

East Coast area

Partly cloudy. Medium chance of showers, most likely in the afternoon and evening. Winds southwesterly 25 to 35 km/h. Overnight temperatures falling to between 11 and 15 with daytime temperatures reaching the low to mid 20s.

Sun protection recommended from 8:50 am to 5:20 pm, UV Index predicted to reach 11 [Extreme]

Friday 29 December



Min 11 Max 20

Partly cloudy.

Chance of any rain: 5% ■■■■■■■■■■

East Coast area

Partly cloudy. Winds southwesterly 15 to 20 km/h turning westerly 20 to 30 km/h during the morning. Overnight temperatures falling to between 5 and 10 with daytime temperatures reaching between 18 and 22.

Sun protection recommended from 8:50 am to 5:20 pm, UV Index predicted to reach 11 [Extreme]

Saturday 30 December



Min 12 Max 18

Wind easing. Cloudy.

Chance of any rain: 10% ■■■■■■■■■■

East Coast area

Cloudy. Winds westerly 20 to 30 km/h turning southwesterly 25 to 35 km/h during the morning then decreasing to 15 to 20 km/h during the evening. Overnight temperatures falling to between 7 and 12 with daytime temperatures reaching between 15 and 20.

Sun protection recommended from 8:50 am to 5:30 pm, UV Index predicted to reach 11 [Extreme]

Hobart

Friday 29 December



Min 10 Max 20

Partly cloudy.

Chance of any rain: 10% ■■■■■■■■■■

Hobart area

Partly cloudy. Winds westerly 25 to 35 km/h.

Sun protection recommended from 8:50 am to 5:30 pm, UV Index predicted to reach 11 [Extreme]

Saturday 30 December



Min 11 Max 18

Cloudy.

Chance of any rain: 10% ■■■■■■■■■■

Hobart area

Cloudy. Winds westerly 15 to 25 km/h tending southwesterly 25 to 35 km/h during the morning then becoming light during the evening.

Sun protection recommended from 8:50 am to 5:30 pm, UV Index predicted to reach 11 [Extreme]

Sunday 31 December



Min 9 Max 23

Partly cloudy.

Chance of any rain: 5% ■■■■■■■■■■

Hobart area

Partly cloudy. Winds west to northwesterly 15 to 20 km/h shifting southeasterly later.

Monday 1 January



Min 12 Max 22

Partly cloudy.


Chance of any rain: 10% ■■■■■■■■■■

Hobart area

Partly cloudy. Light winds becoming southeasterly 15 to 25 km/h during the day.

Update your weather information

[Marine & Ocean \(bom.gov.au\)](http://bom.gov.au)



Australian Government
Bureau of Meteorology


HOME | ABOUT | MEDIA | CONTACTS

NSW | VIC | QLD | WA | SA | TAS | ACT | NT | AUSTRALIA | ANTARCTICA

[Bureau Home](#) > Marine & Ocean

Marine & Ocean

NSW | VIC | QLD | WA | SA | TAS | NT



⚠ Warnings

Select state using the tabs above.

Current:

- Marine Wind Warning Summary for Tasmania.

| Forecasts | Observations |
|---|---|
| Denwent Estuary | Latest weather for the Hobart area |
| Frederick Henry and Norfolk Bay | Live wind map for Tasmania |
| Storm Bay | Latest coastal weather |
| The Channel | Coastal observations via clickable map |
| MetEye forecast wind and wave maps for Hobart waters | Latest weather graphs via clickable map |
| Central Plateau Lakes | Radar Viewer |
| South West Lakes | Cape Sorell waves |
| Local & coastal waters forecasts via clickable map including Southeast Inshore & Inland Lakes | Maria Island waves |
| Bass Strait and approaches | |
| MetEye forecast wind and wave maps | |

National Services

Marine Wind Maps

Tide Predictions

Sea Temperature & Currents

Interactive Weather and Wave Maps

High Seas Forecasts

Seasonal Ocean Temperature Outlooks

Marine Lite

Port Air Pressure

➤ Marine Weather Knowledge Centre

➤ About marine forecasts

➤ Boating safety

➤ Rock fishing safety

➤ Communication services

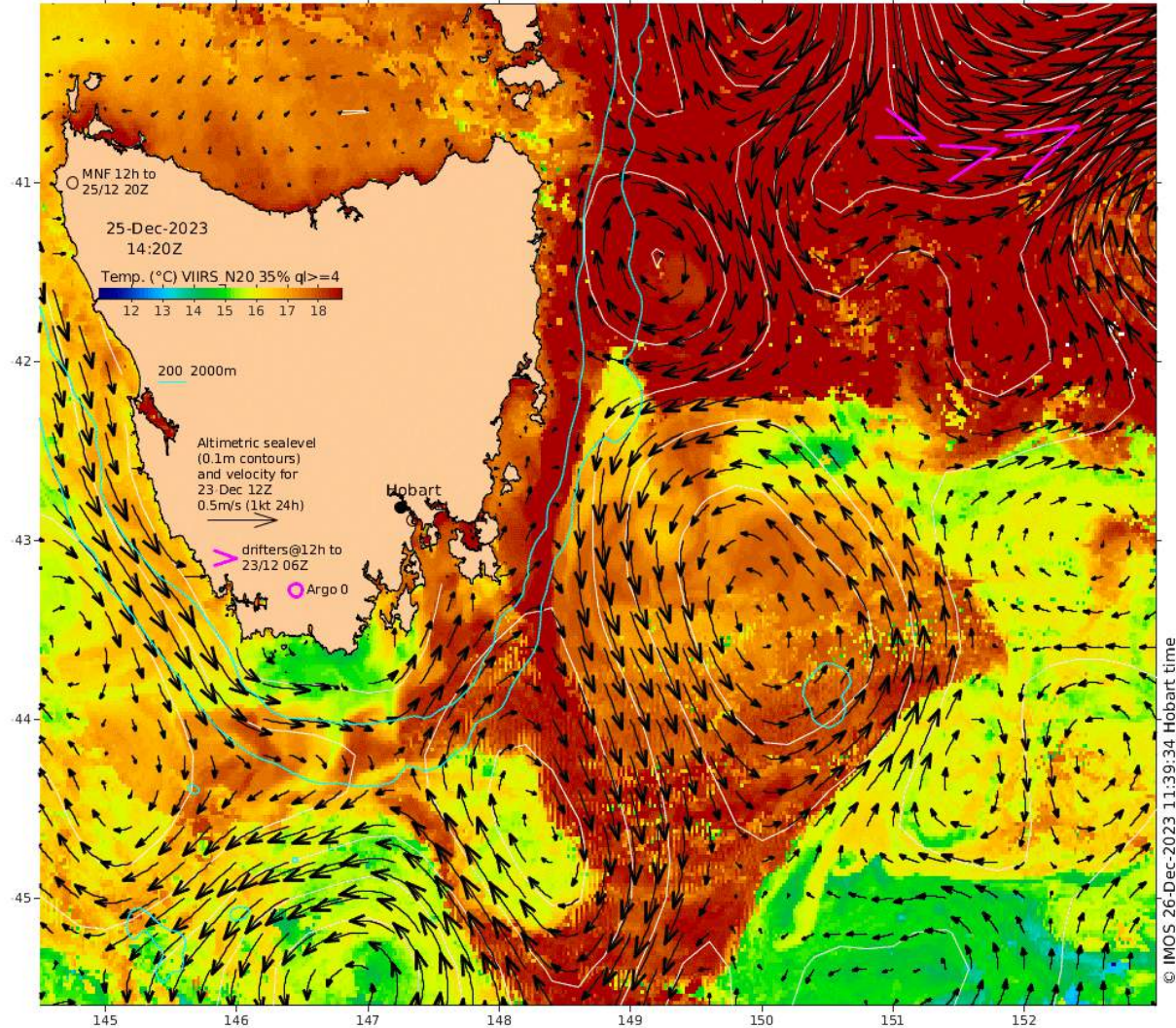
➤ MarineLite

➤ Averages and trends

➤ Definitions

➤ Give feedback

Latest CSIRO SSTs and Ocean Currents



Check out

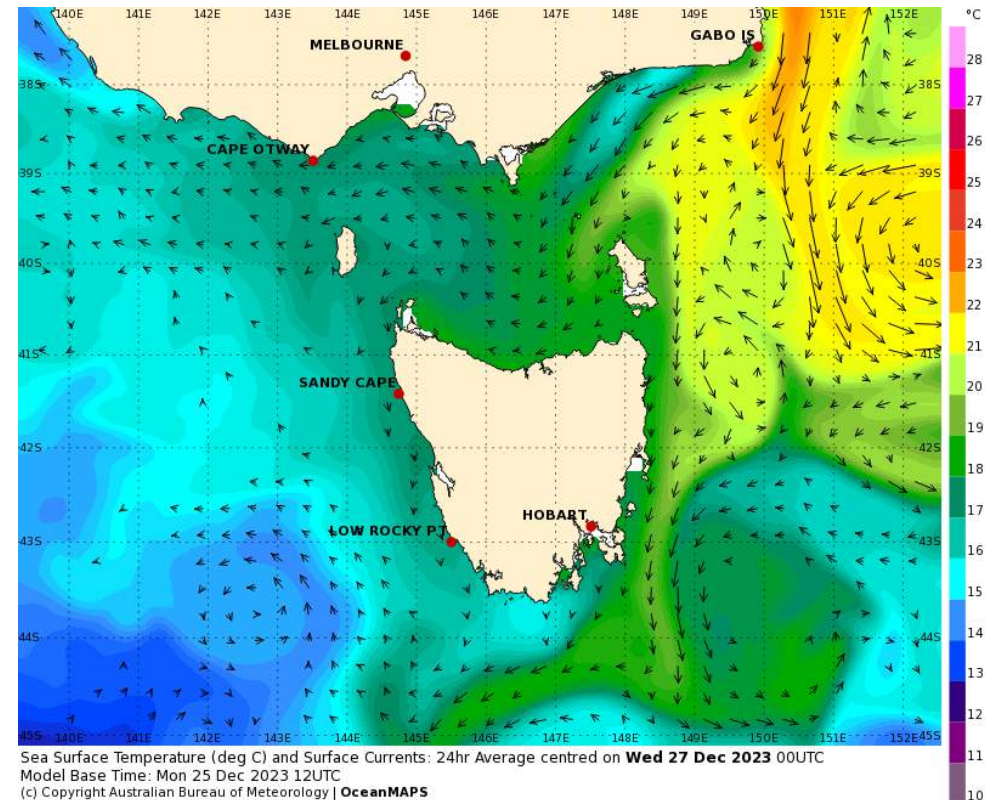
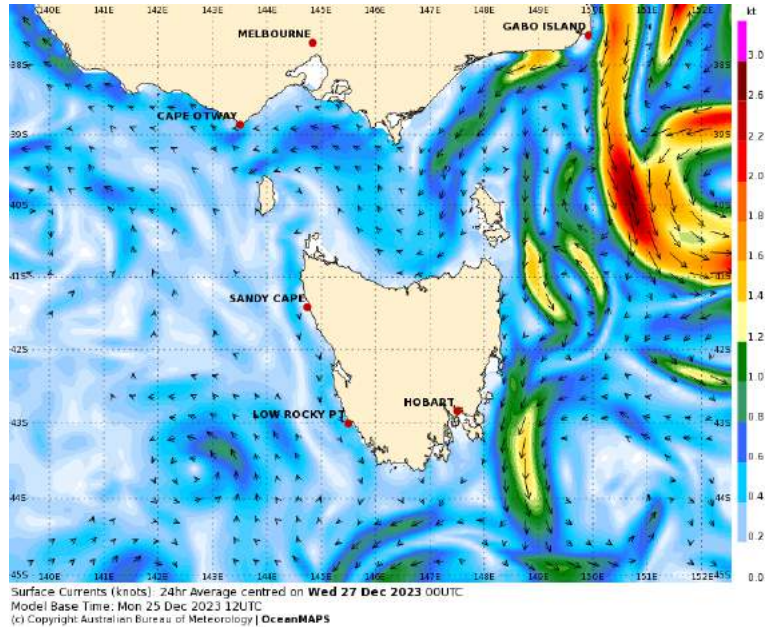
<https://oceancurrent.aodn.org.au/tides/index.htm>

for modelling of current flows in Bass and Banks Straits.

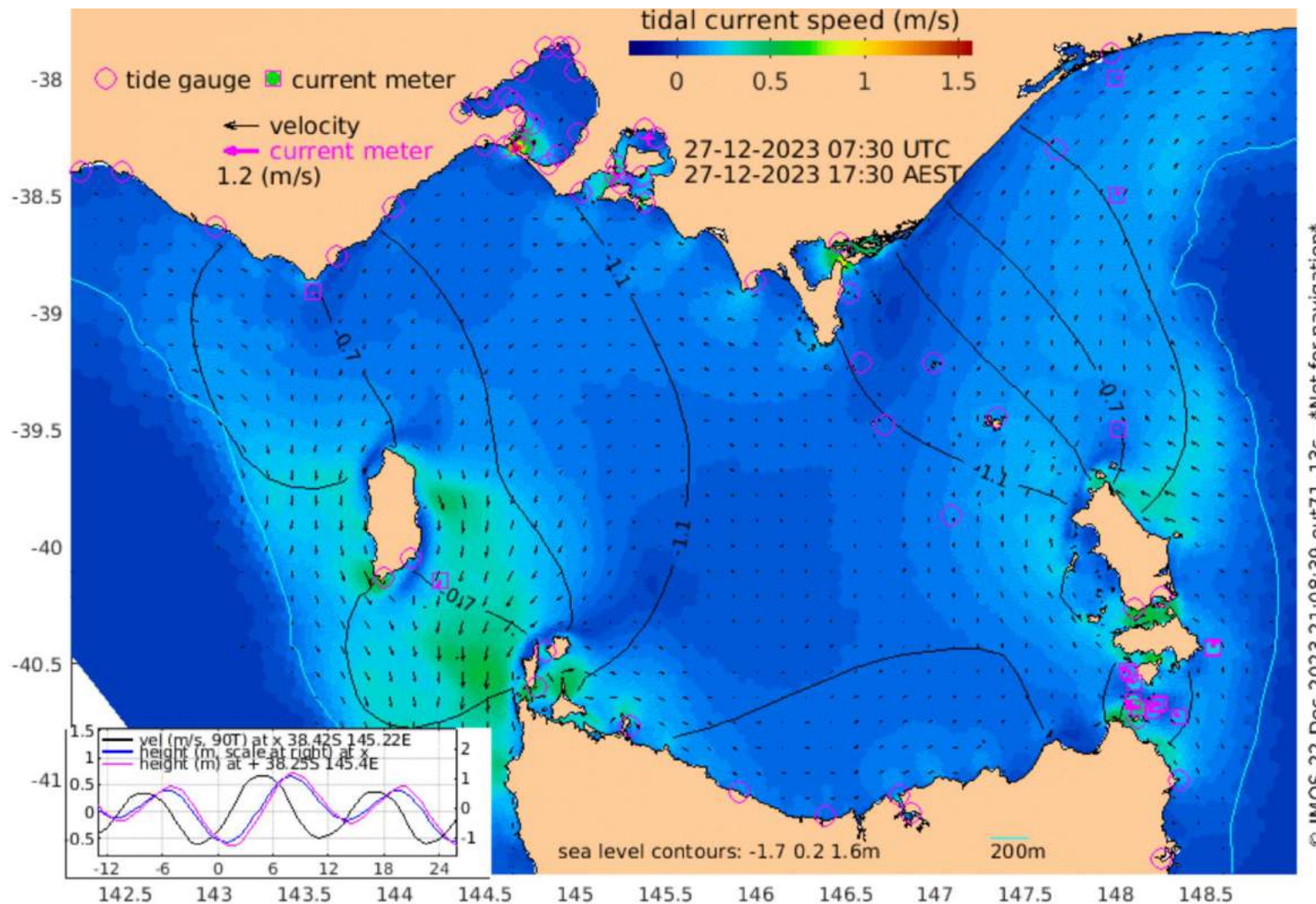
It would appear from the latest CSIRO sea surface temperature analysis that there will be current flow against you down the east coast.

[SST IMOS-OceanCurrent](#)

Bureau of Met Ocean Current prediction Victoria and Tasmania (bom.gov.au)



Or according to
this lower
resolution
product from
the
CSIRO/Bureau
of
Meteorology.
It shows
current with
you!
Take your pick?



Tidal Flow
in Banks
Strait
becomes
slack
around
17:30 LT on
27th before
running
from the
east.

More information at <https://oceancurrent.aodn.org.au/tides/index.htm>

○ WED 27 DEC

HIGH

12:18 am
3.15 m

LOW

6:29 am
1.32 m

HIGH

12:07 pm
3.18 m

LOW

6:53 pm
0.60 m

Tide at Low Head

○ WED 27 DEC

| | |
|------|--------------------|
| LOW | 3:27 am 0.47 m |
| HIGH | 9:34 am 1.56 m |
| LOW | 4:22 pm 0.02 m |
| HIGH | 10:46 pm 1.26 m |

THU 28 DEC

| | |
|------|--------------------|
| LOW | 4:12 am 0.50 m |
| HIGH | 10:19 am 1.56 m |
| LOW | 5:09 pm 0.02 m |
| HIGH | 11:35 pm 1.25 m |

FRI 29 DEC

| | |
|------|--------------------|
| LOW | 4:59 am 0.52 m |
| HIGH | 11:05 am 1.55 m |
| LOW | 5:57 pm 0.03 m |
| | |

Tides at
Swan
Island

Please note: The predictions are in daylight saving time when it is observed.

| FRI 29 DEC | | SAT 30 DEC | | SUN 31 DEC | | MON 1 JAN | | TUE 2 JAN | | WED 3 JAN | |
|------------|-------------------|------------|--------------------|------------|--------------------|-----------|--------------------|-----------|--------------------|-----------|-------------------|
| HIGH | 9:44 am 1.42 m | HIGH | 10:25 am 1.36 m | HIGH | 2:20 am 1.06 m | HIGH | 2:38 am 1.09 m | HIGH | 2:56 am 1.11 m | HIGH | 3:15 am 1.15 m |
| LOW | 5:58 pm 0.34 m | LOW | 6:37 pm 0.38 m | LOW | 5:07 am 1.05 m | LOW | 6:42 am 1.02 m | LOW | 7:56 am 0.98 m | LOW | 9:06 am 0.92 m |
| | | | | HIGH | 11:06 am 1.30 m | HIGH | 11:50 am 1.23 m | HIGH | 12:42 pm 1.14 m | HIGH | 1:45 pm 1.06 m |
| | | | | LOW | 7:14 pm 0.43 m | LOW | 7:47 pm 0.48 m | LOW | 8:17 pm 0.54 m | LOW | 8:45 pm 0.59 m |

Tides in Hobart

Last Bit

- Always keep abreast of the weather via radio sources including radio skeds, the internet (plenty of weather sites including the Bureau of Meteorology) and never forget the Eye Ball Mk1 method.
- Remember in forecasts and warnings that the average wind speed and the Significant Wave Height (Hsig) is forecast. Be aware that wind gusts can be up to 40% more (in thunderstorms it can be up to 150% more) than the average. Wave heights can be higher, up to twice the Hsig and lower than the Hsig. Wave heights can be horrific in situations where wind/swell waves opposes tidal and ocean currents.
- Winds can be locally stronger/lighter in a lot of areas, but locally stronger in Banks Strait and Tasman Island in most wind flows.
- Have a great but safe race