



Launceston to Hobart Yacht Race 2025

DERWENT SAILING SQUADRON
23 Marieville Esplanade, Sandy Bay Tas 7005
P 03 6223 1977 | E sailing@dssinc.org.au
www.dssinc.org.au | [L2H Facebook](#)

Weather Forecast

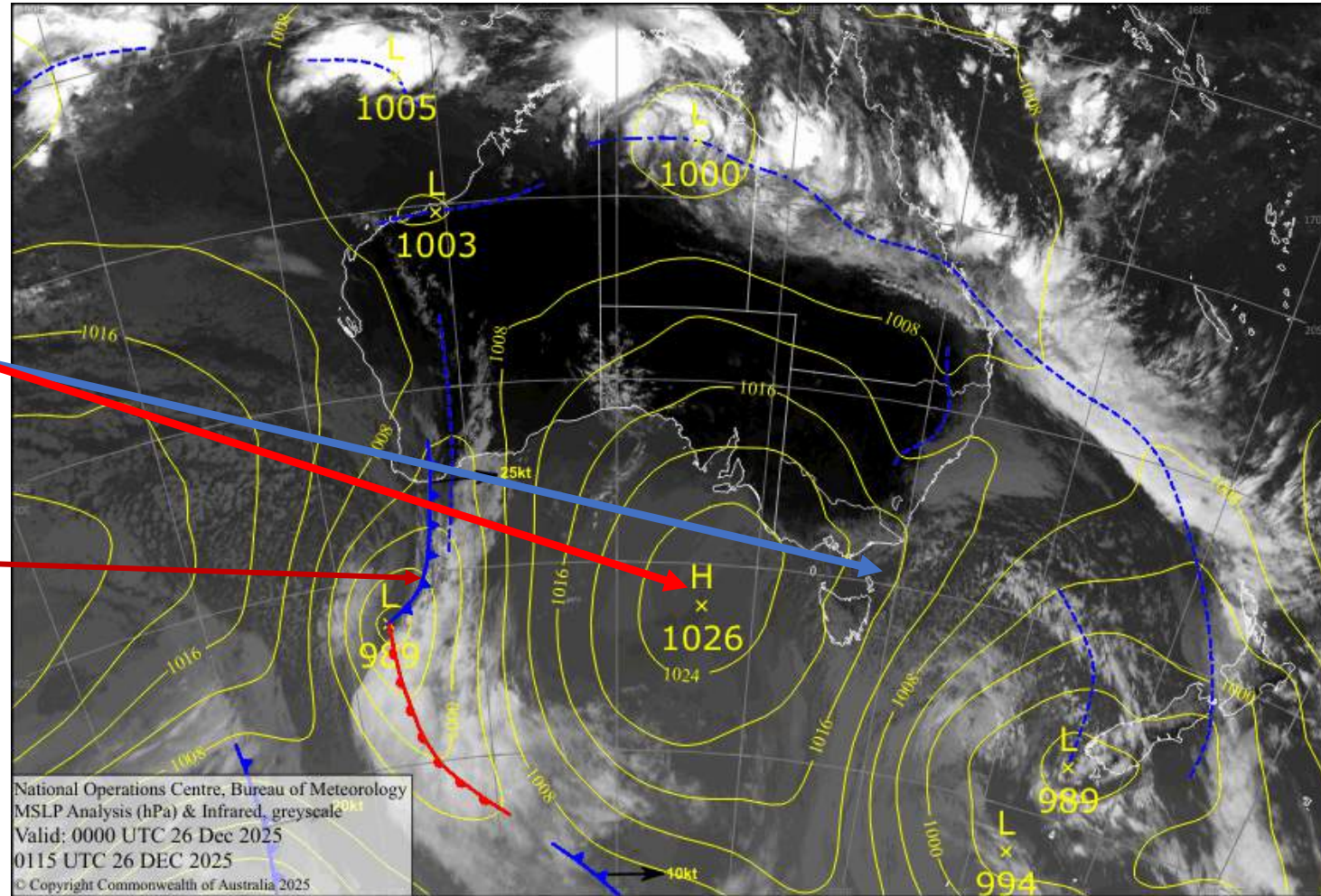
Issued by Kenn Batt at 1600hr 26/12/2025

Most products used in this briefing have been sourced from Weatherzone, the Bureau of Meteorology and the CSIRO

Latest Surface Isobaric Chart

A high pressure system south of the Bight slowly builds a ridge over Tasmania.

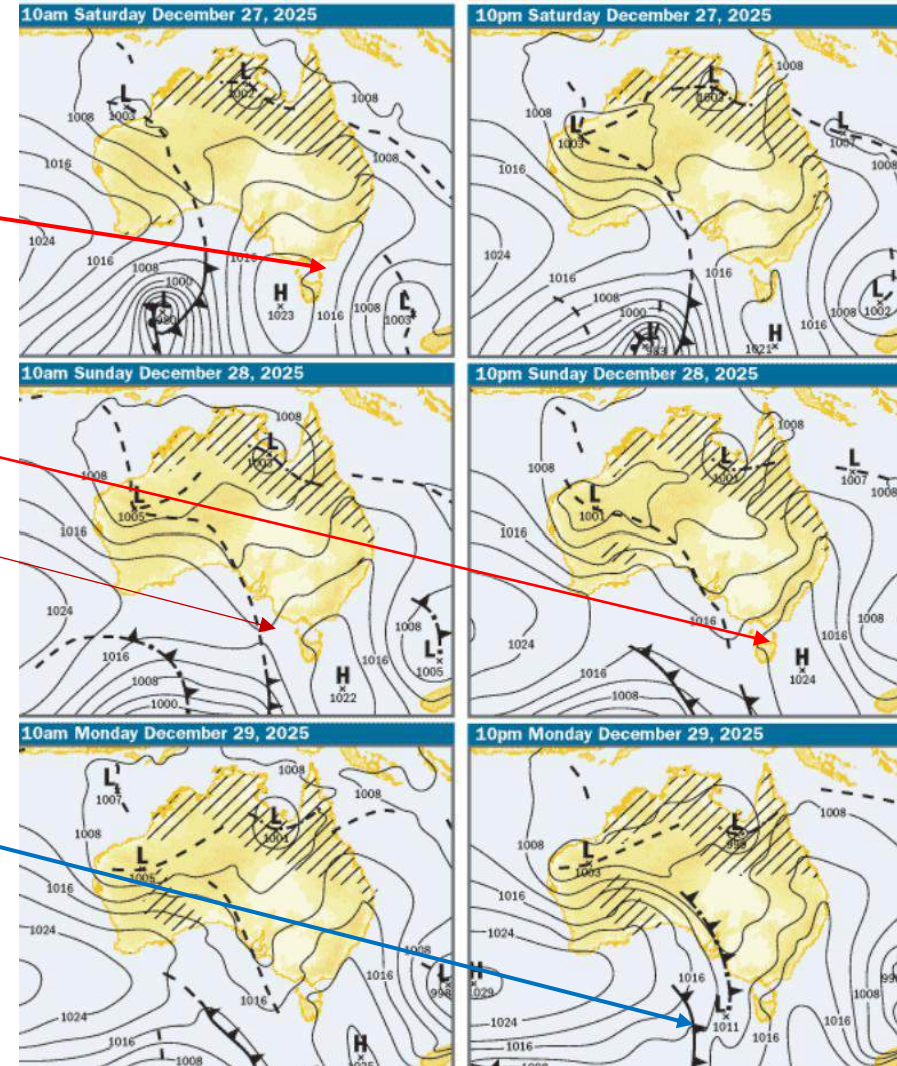
A cold front lies well to west



Forecast Charts for next few days

A high pressure centre will move to the south of Tasmania on Saturday before entering the Tasman Sea on Sunday. A cold front approaches from the west on Sunday but is expected to weaken and slide to the south of Tasmania

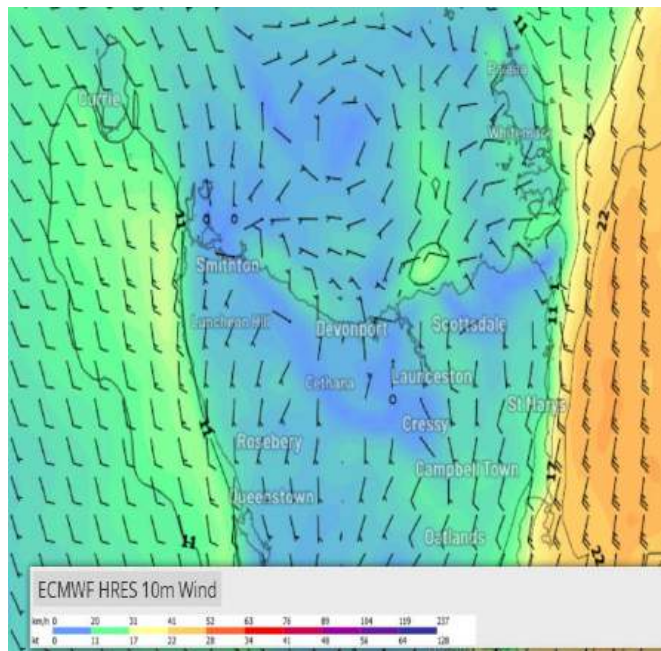
By late Monday another cold front will be situated just west of Tasmania.



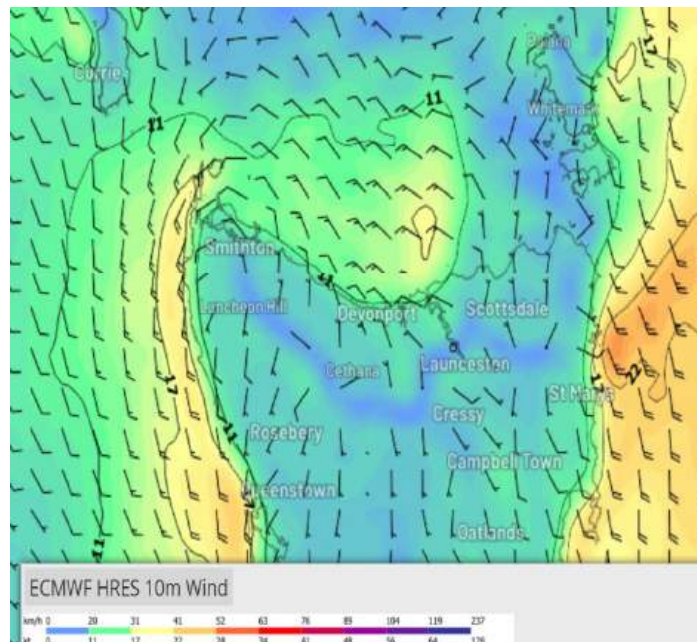
Forecast Winds, etc

- ECMWF Forecast winds below are courtesy of Weatherzone (subscription service) [Weatherzone Layers](#)
- My current model of choice is the ECMWF model.
- This is shaping up to be a testy race especially for the first two days. I imagine that there will be some parking lots at times.
- Check out Windy.com for ECMWF and ACCESS models among others.
- **Update** weather forecasts and **warnings regularly** via the internet and radio sources.
- Timing and intensity of weather systems noted in the briefing may change.

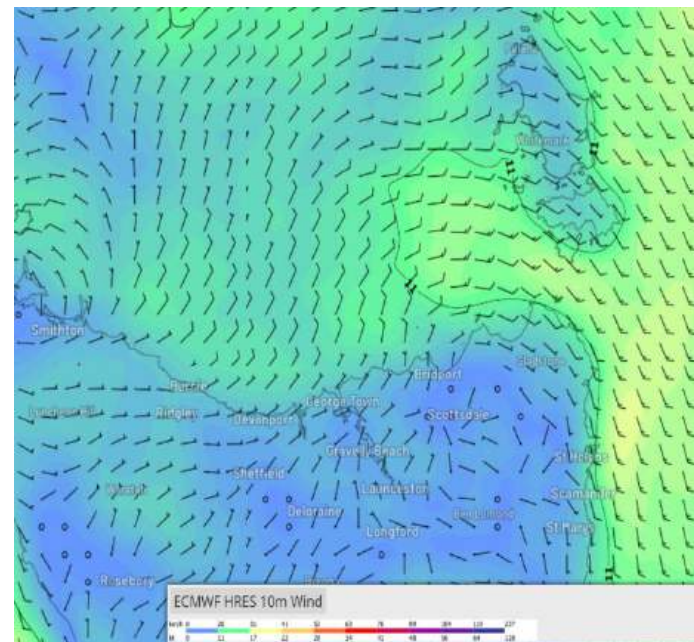
Sat 27th December



11am



5pm



11pm

A ridge of high pressure moves over Tasmania during today.

Chiefly light and variable winds early, becoming 5 to 12kt (ave) N to NW'ly from late morning/early afternoon.

Winds becoming 5 to 15kt (ave) E to SE'ly in far eastern parts by mid-late afternoon. Winds reaching 20kt at times S of about Swan Is.

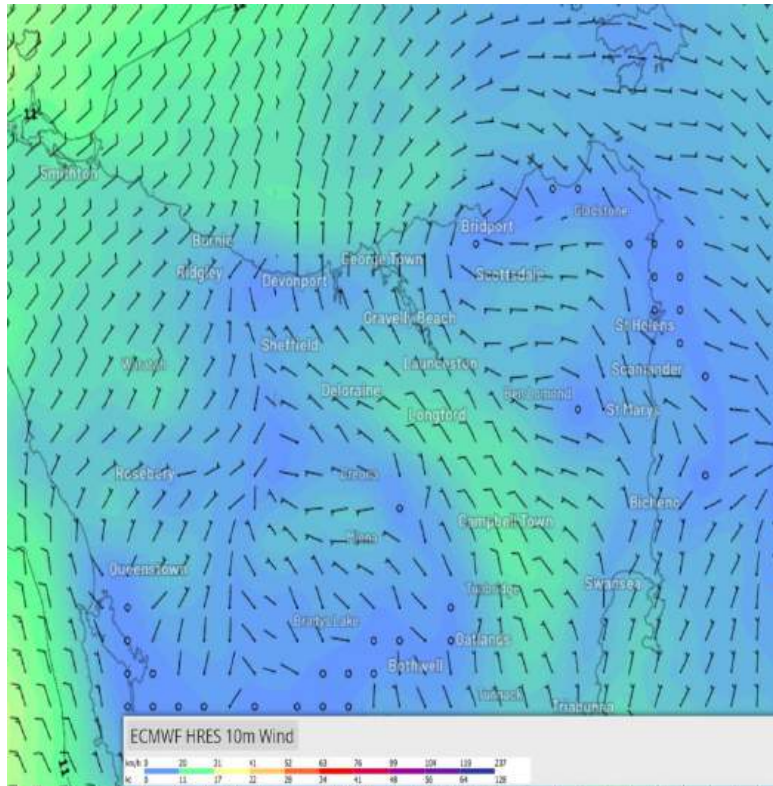
Wind waves: 0.5 to 1.0m (Hsig) rising to 1.5m (Hsig) at times in far E parts.

Swell waves: from W up to 1.0m (Hsig), becoming S to SE 1.5 to 2.5m (Hsig) in far E parts.

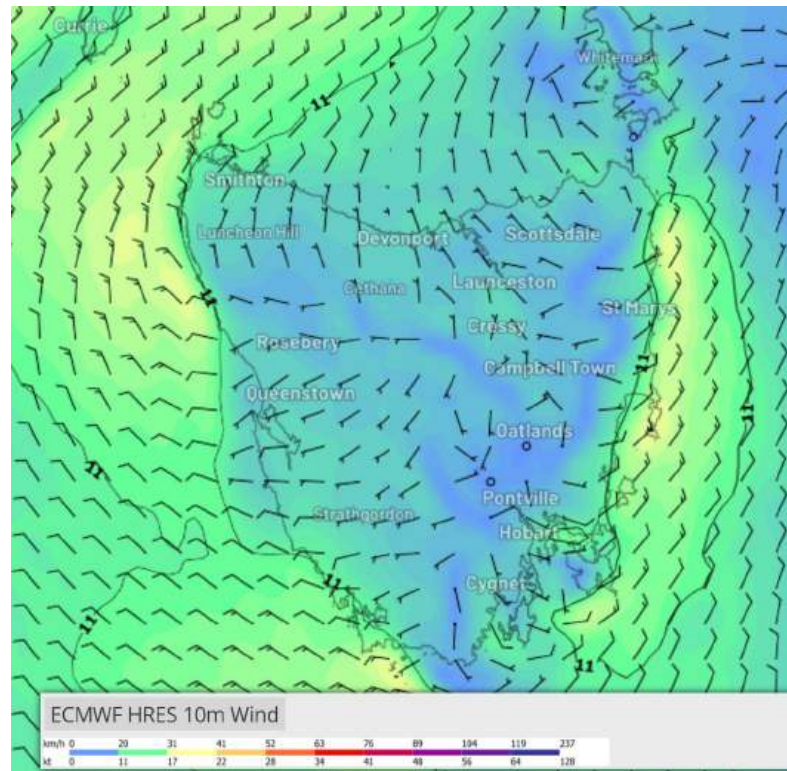
NOTE: Waves can be higher than forecast especially when ocean/tidal currents oppose wind/swell waves

Weather: Fine.

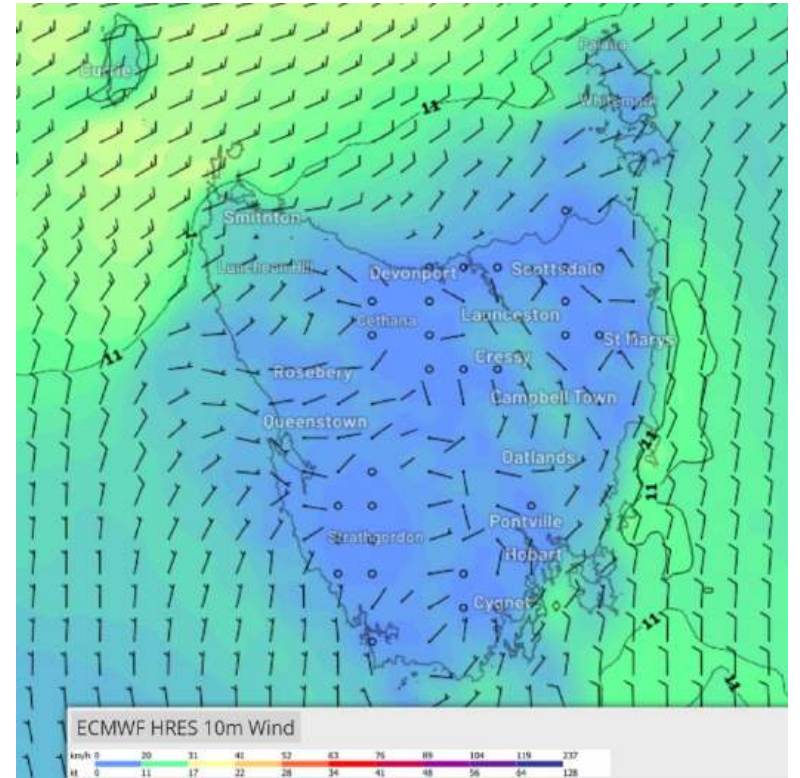
Sun 28th December



8am



2pm



11pm

A ridge of high pressure lies over Tasmania.

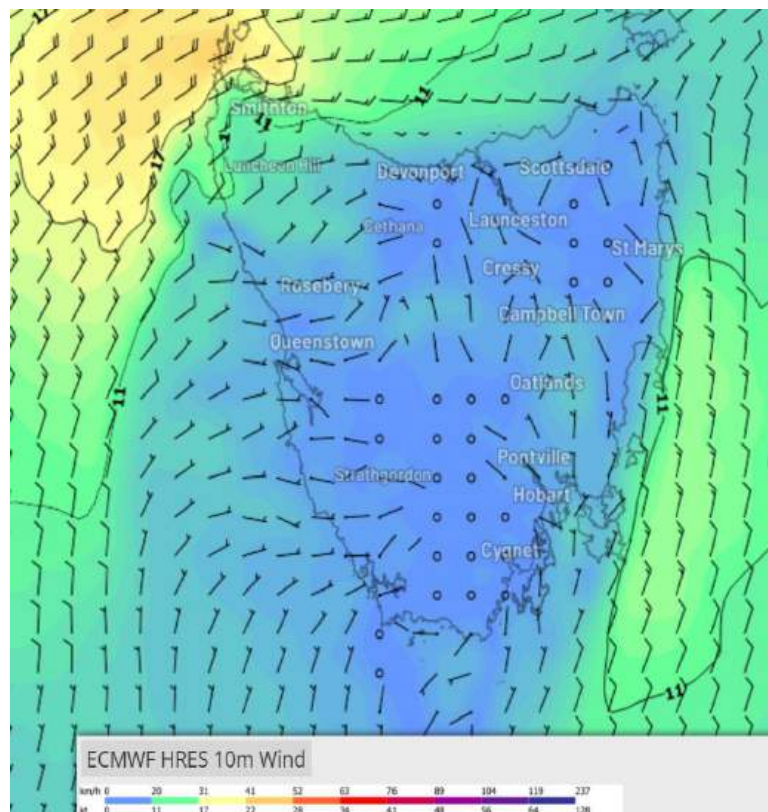
Winds becoming light and variable by about dawn before tending N to NE'ly at 5 to 15kt (ave) during the late morning/early afternoon and easing 5 to 12kt (ave) by mid to late evening.

Sea waves: 0.5 to 1.2m (Hsig)

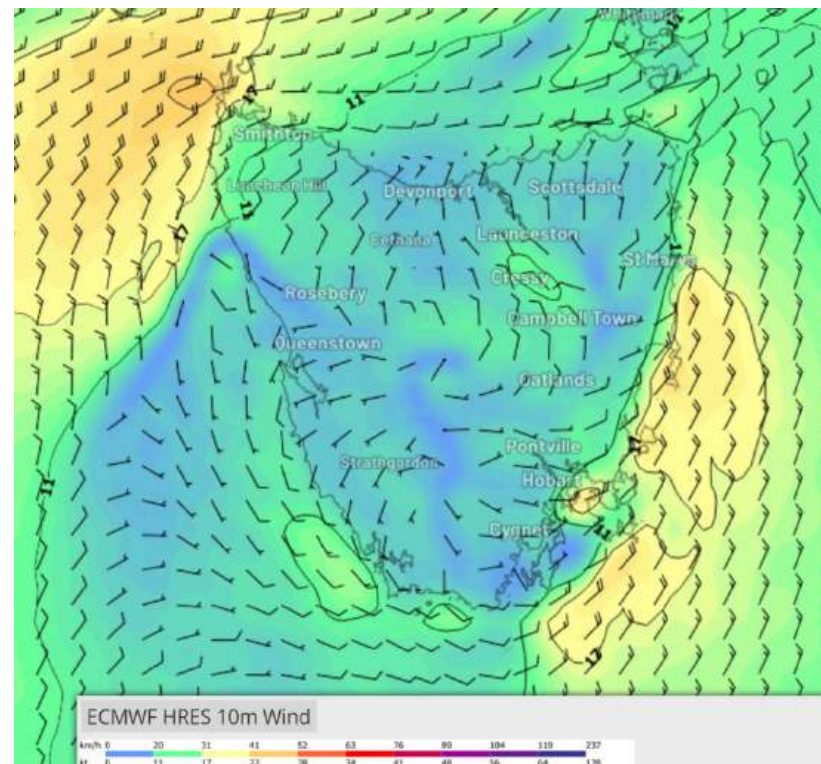
Swell waves: S'ly 1.5 to 2.5m (Hsig) at first, tending SE'ly 1.0 to 2.0m (Hsig) from late morning.

Weather: Cloudy at times.

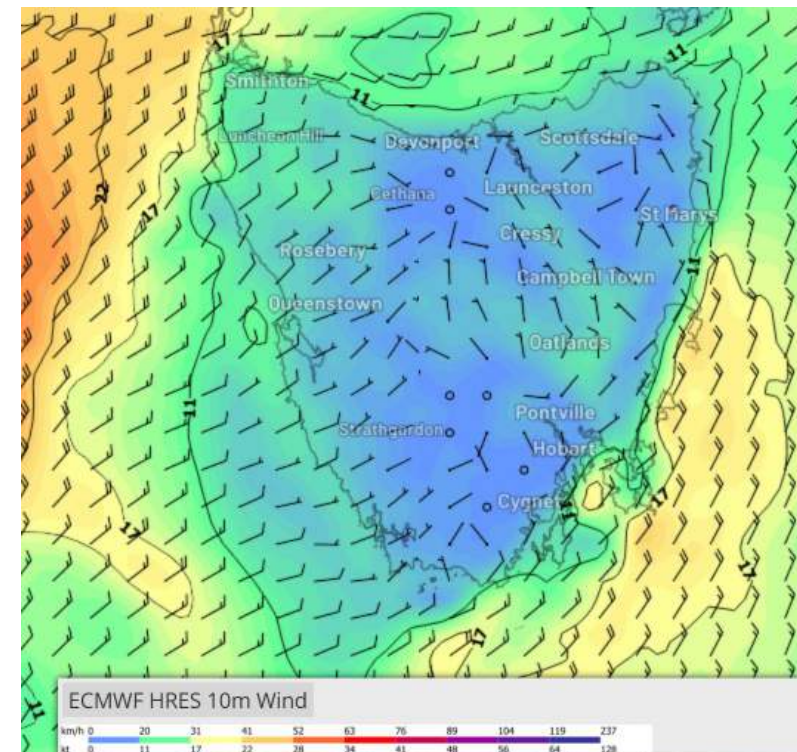
Mon 29th December



8am



5pm



11pm

The high pressure is expected to situation E of Tasmania as a cold front moves closer to Tasmania.

N to NW winds 5 to 10kt (ave), or variable at times becoming N to NE at 15 to 20kt (ave) during the day especially S of about Bicheno.

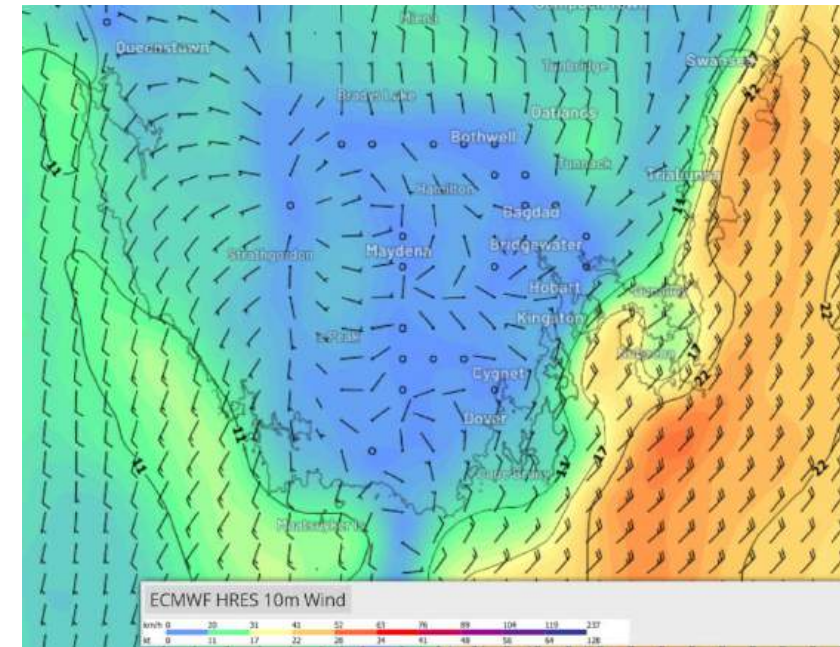
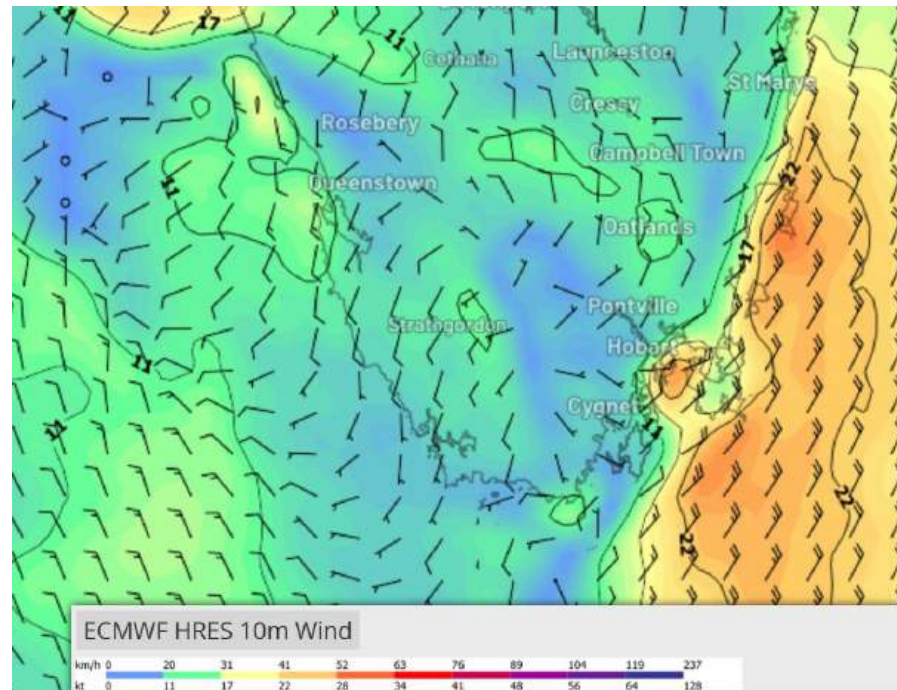
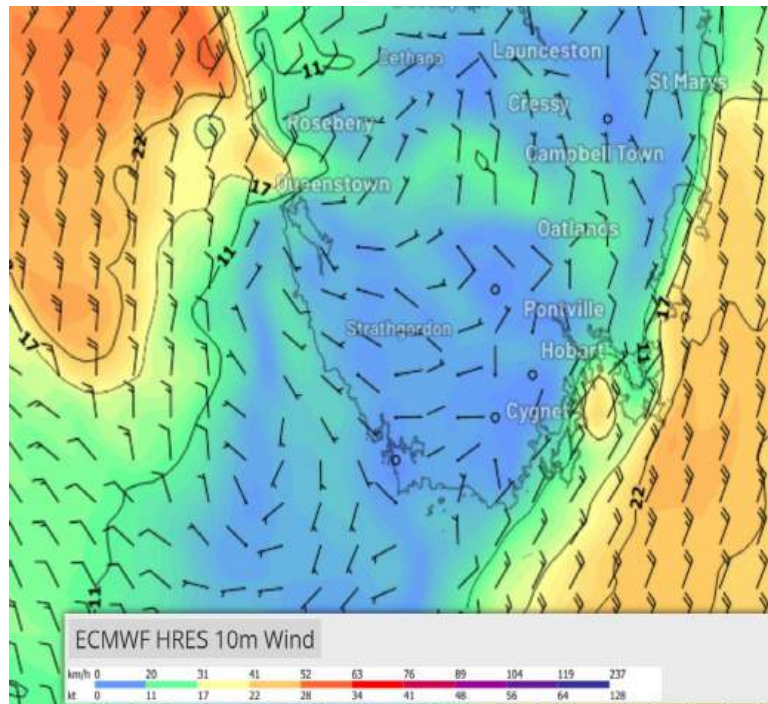
Winds are expected to be squally and erratic in vicinity of Tasman Island and winds may become lighter and more variable in the Derwent overnight.

Sea waves: 1.0 to 1.5m (Hsig)

Swell waves: from SE at 1.0 to 2.0m (Hsig) along E coast, tending W'ly around 1.0m (Hsig) in Storm Bay.

Weather: Fine and partly cloudy.

Tue 30th December



8am

2pm

11pm

A cold front moves over Tasmania during the evening.

N to NE winds at 10 to 15kn (ave), increasing 15 to 25kt (ave) and reaching 30kt at times on E coast

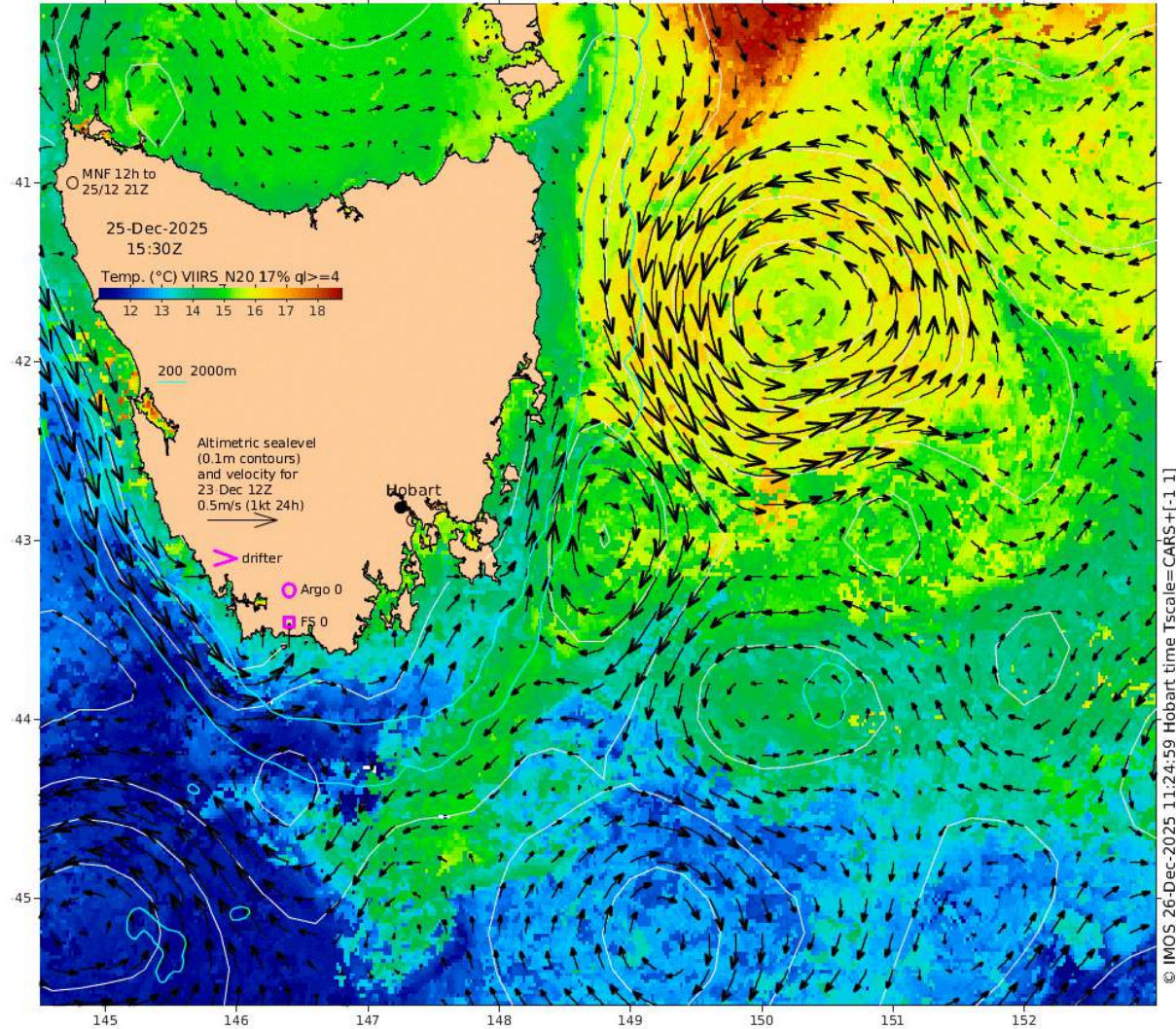
Winds squally and erratic in vicinity of Tasman Island and may become lighter and more variable in the Derwent overnight.

Sea waves: 1.0 to 2.0m (Hsig), rising 2.0 to 3.0m (Hsig) at times along E coast

Swell waves: from E to SE to 1.0m (Hsig) on E coast, becoming W to 1.0m (Hsig) in Storm Bay.

Weather: Cloudy. Moderate risk of late showers

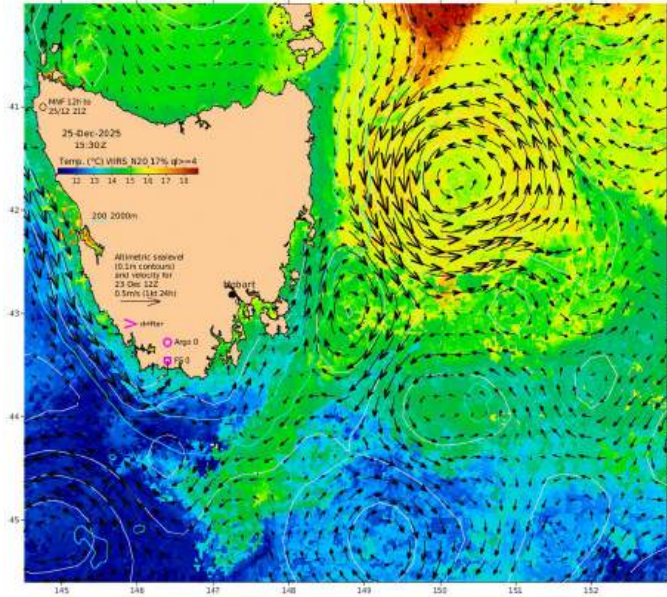
Latest CSIRO SSTs and Ocean Currents



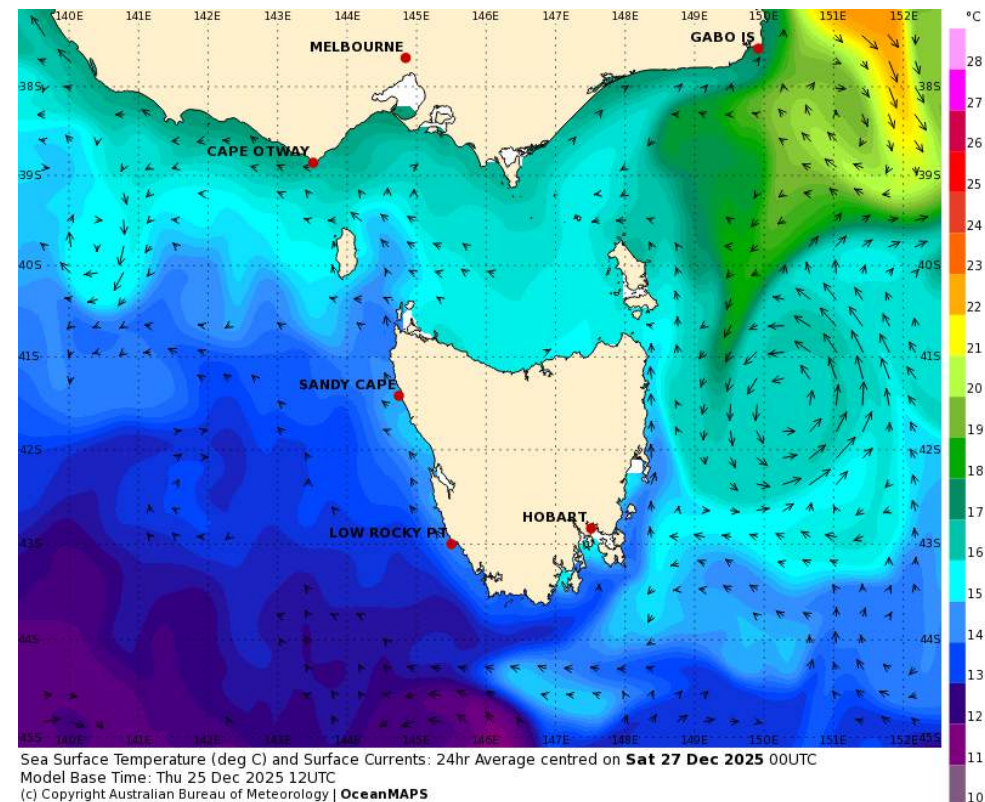
It would appear from the latest CSIRO sea surface temperature analysis that there will be moderate current flow against you S of about Cape Tourville. And weak against you N of Cape Tourville.

[SST IMOS-OceanCurrent](#)

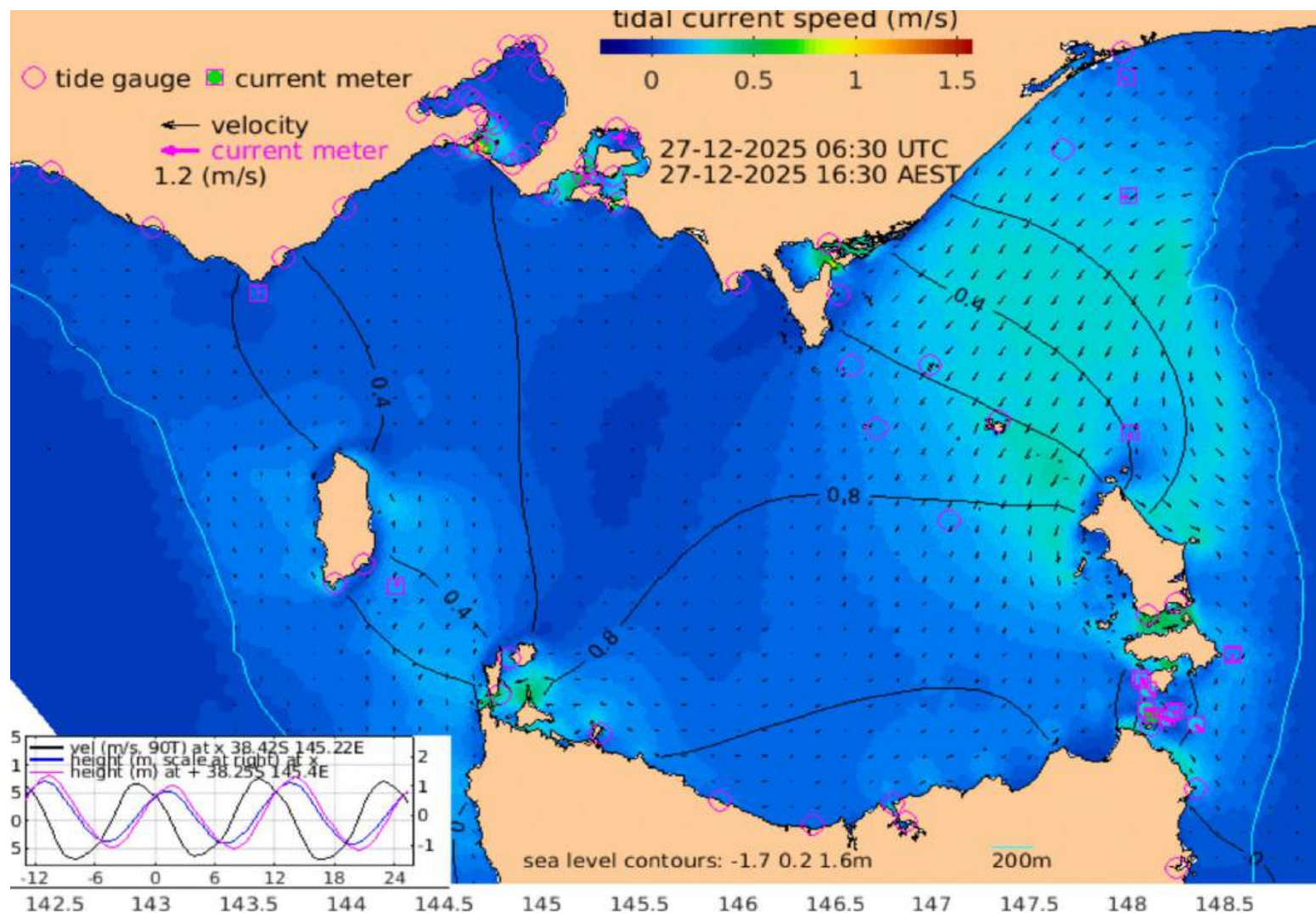
Bureau of Met Ocean Current prediction Victoria and Tasmania (bom.gov.au)



Latest CSIRO SST/Ocean current analysis (from previous slide)



According to this forecast product from the CSIRO/Bureau of Meteorology. It shows a weak to moderate (S of Cape Tourville) current against you along the east coast



Tidal Flow in Banks Strait running from the east becomes slack around 17:30 LT on 27th before running from the west.

More information at <https://oceancurrent.aodn.org.au/tides/index.htm>

SAT 27 DEC

HIGH

5:22 am
3.34 m

LOW

11:44 am
1.01 m

HIGH

5:29 pm
3.17 m

LOW

11:54 pm
0.78 m

Tide at Low Head

SAT 27 DEC

HIGH	4:02 am 1.31 m
LOW	10:03 am 0.42 m
HIGH	4:07 pm 1.32 m
LOW	10:28 pm 0.28 m



SUN 28 DEC


HIGH	4:50 am 1.35 m
LOW	11:02 am 0.36 m
HIGH	5:09 pm 1.30 m
LOW	11:18 pm 0.33 m

MON 29 DEC

HIGH	5:35 am 1.39 m
LOW	11:58 am 0.28 m
HIGH	6:08 pm 1.28 m

Tides at
Swan
Island

Please note: The predictions are in daylight saving time when it is observed.

MON 29 DEC		TUE 30 DEC		WED 31 DEC		THU 1 JAN		FRI 2 JAN		 SAT 3 JAN	
HIGH	5:35 am 1.39 m	LOW	12:06 am 0.37 m	LOW	12:53 am 0.41 m	LOW	1:39 am 0.44 m	LOW	2:25 am 0.47 m	LOW	3:10 am 0.49 m
LOW	11:58 am 0.28 m	HIGH	6:20 am 1.44 m	HIGH	7:05 am 1.49 m	HIGH	7:48 am 1.53 m	HIGH	8:32 am 1.56 m	HIGH	9:17 am 1.57 m
HIGH	6:08 pm 1.28 m	LOW	12:52 pm 0.20 m	LOW	1:43 pm 0.13 m	LOW	2:32 pm 0.07 m	LOW	3:20 pm 0.03 m	LOW	4:07 pm 0.01 m
		HIGH	7:06 pm 1.27 m	HIGH	8:01 pm 1.27 m	HIGH	8:53 pm 1.26 m	HIGH	9:43 pm 1.26 m	HIGH	10:31 pm 1.26 m

Tides in Hobart

Update your weather information

[Marine & Ocean \(bom.gov.au\)](https://bom.gov.au) the one stop shop

The screenshot shows the 'Coasts and oceans' section of the Marine & Ocean website. The header is blue with white text. Below the header, there are tabs for 'Map' and 'Places', with 'Map' selected. The main heading is 'Coasts and oceans' in large white font, followed by a subtitle: 'Find Australian tides and marine weather information for coastal and local waters, lakes, seas and oceans'. Below this, there is a 'Weather map' section. It includes a search bar with the placeholder 'Search for a location', a magnifying glass icon, and a link 'Use my current location' with a location pin icon. To the right, there is a 'Favourite locations' dropdown menu with the text 'Select' and a downward arrow. At the bottom, there are tabs for 'Wind', 'Waves', 'Rain', and 'More weather ...', with 'Wind' selected.

Weather and climate > Specialised forecasts and observations > Coasts and oceans

Coasts and oceans

Find Australian tides and marine weather information for coastal and local waters, lakes, seas and oceans

Map Places

Weather map

Search for a location

Use my current location

Favourite locations

Select

Wind Waves Rain More weather ...

Last Bit

- Always keep abreast of the weather via radio sources including radio skeds, the internet (plenty of weather sites including the Bureau of Meteorology) and never forget the Eye Ball Mk1 method.
- Remember in forecasts and warnings that the average wind speed and the Significant Wave Height (Hsig) is forecast. Be aware that wind gusts can be up to 40% more (in thunderstorms it can be up to 150% more) than the average. Wave heights can be higher, up to twice the Hsig and lower than the Hsig. Wave heights can be horrific in situations where wind/swell waves oppose tidal and ocean currents.
- Winds can be locally stronger/lighter in a lot of areas, but locally stronger in Banks Strait under broad easterly and westerly flow and Tasman Island in most wind flows.
- Have a great but safe race