



Launceston to Hobart Yacht Race 2025

DERWENT SAILING SQUADRON
23 Marieville Esplanade, Sandy Bay Tas 7005
P 03 6223 1977 | E sailing@dssinc.org.au
www.dssinc.org.au | [L2H Facebook](#)

Weather Forecast

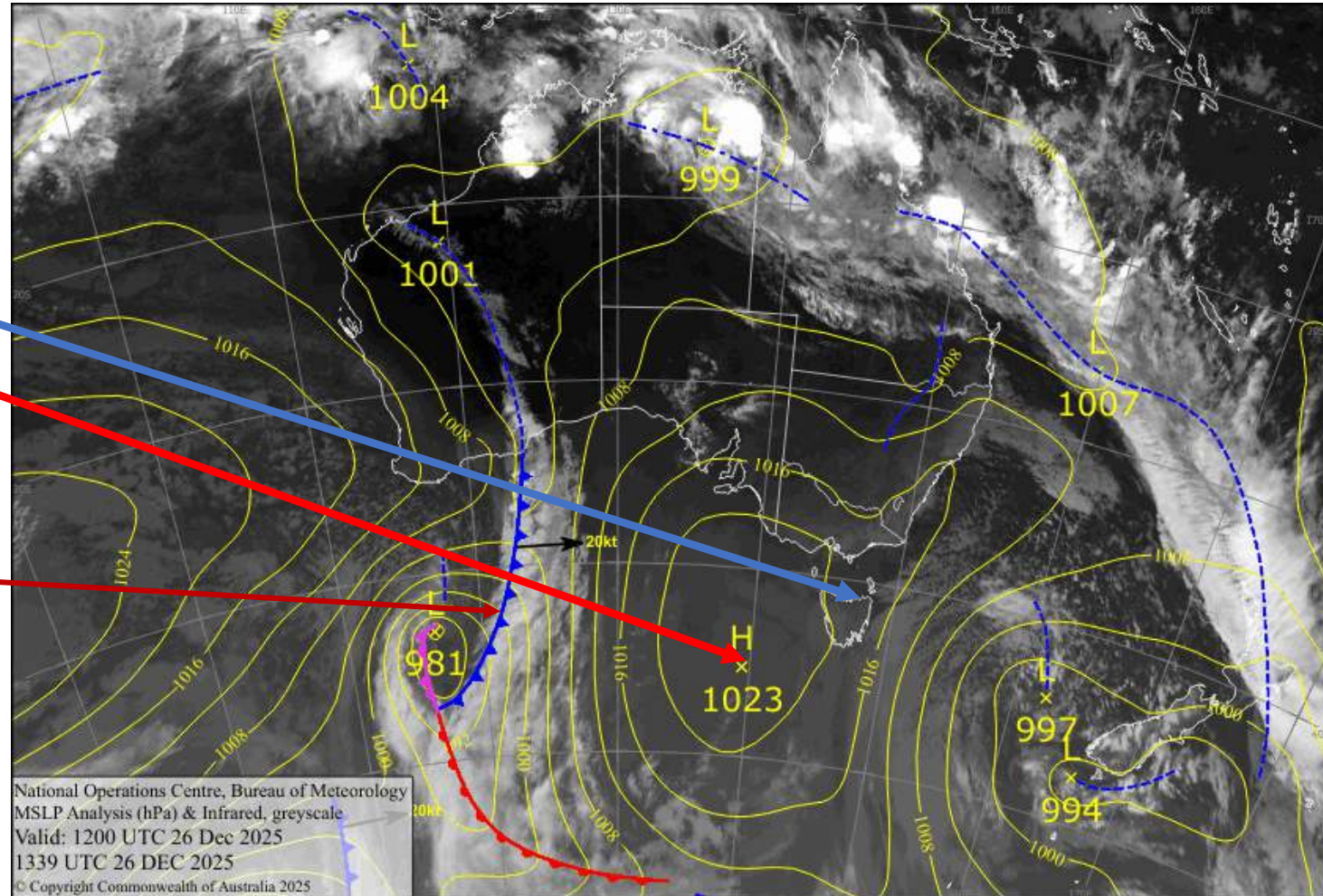
Issued by Kenn Batt at 0700hr 27/12/2025

Most products used in this briefing have been sourced from Weatherzone, the Bureau of Meteorology and the CSIRO

Latest Surface Isobaric Chart

A high pressure system centred to the SW of Tasmania extends a ridge of high pressure over Tasmania.

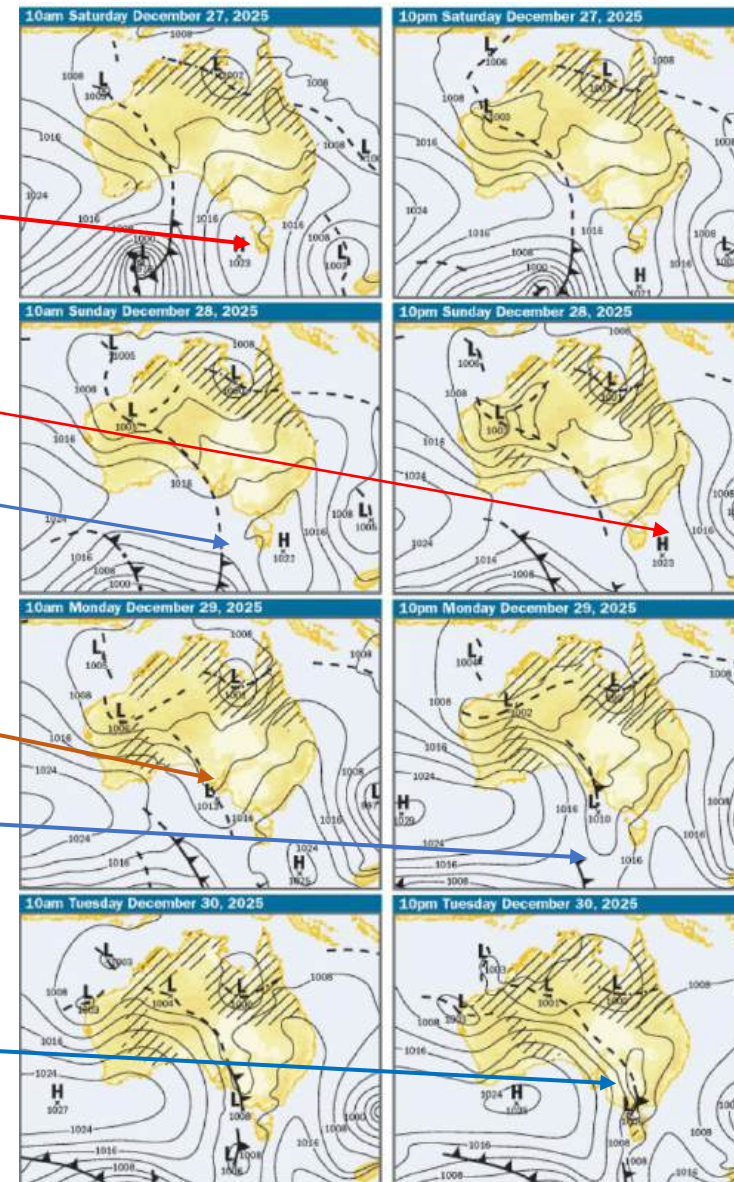
A cold front lies well to west



Forecast Charts for next few days

The high pressure centre will move to the south of Tasmania during today before pushing into the Tasman Sea on Sunday. The cold front approaches from the west on Sunday but is expected to weaken and slide to the south of Tasmania. A trough of low pressure becomes stationary over W Vic.

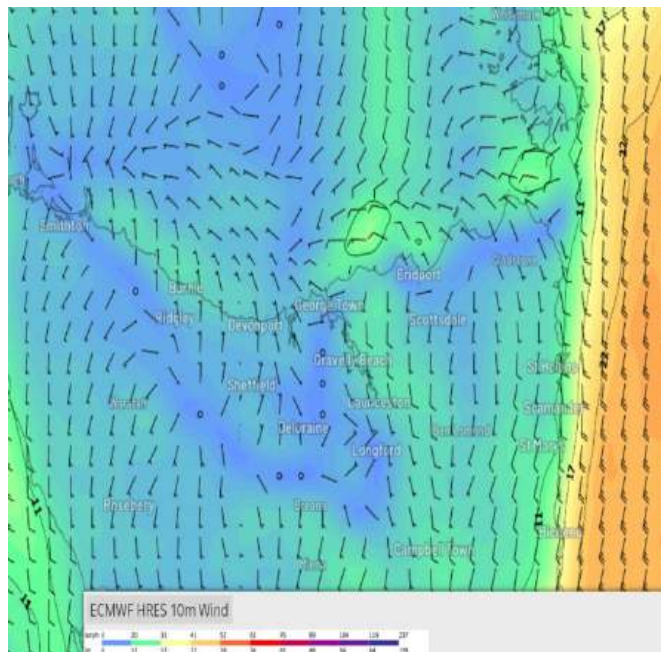
By late Monday another cold front will be situated just west of Tasmania. This front joins up with the stationary trough and this complex is expected to cross the State on Tuesday.



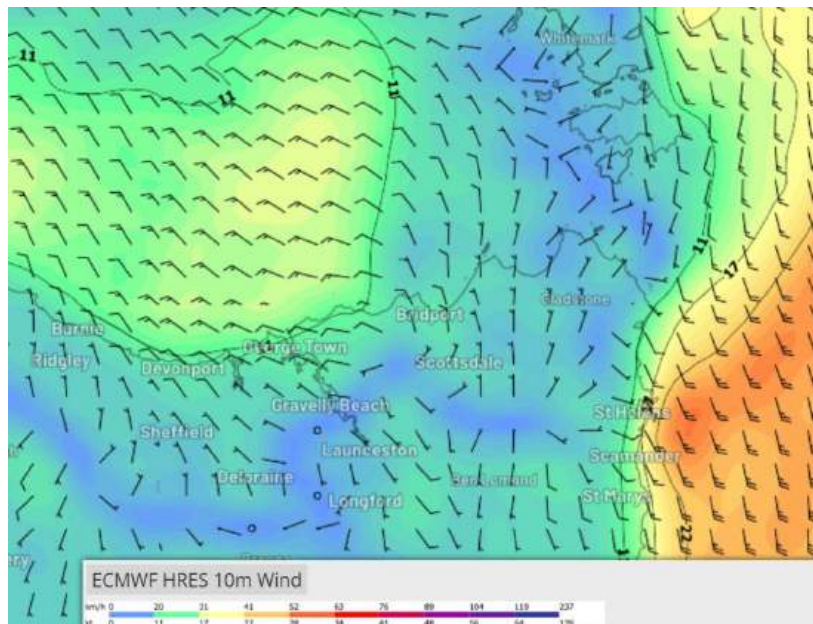
Forecast Winds, etc

- ECMWF Forecast winds below are courtesy of Weatherzone (subscription service) [Weatherzone Layers](#)
- The main models are in good agreement.
- This is shaping up to be a testy race especially for the first two days. I imagine that there will be some parking lots at times.
- When sailing close to the coast, local effects/winds can over-ride the bigger picture (synoptic) wind flow.
- Check out Windy.com for ECMWF and ACCESS models among others.
- **Update** weather forecasts and **warnings regularly** via the internet and radio sources.
- Timing and intensity of weather systems noted in the briefing may change.

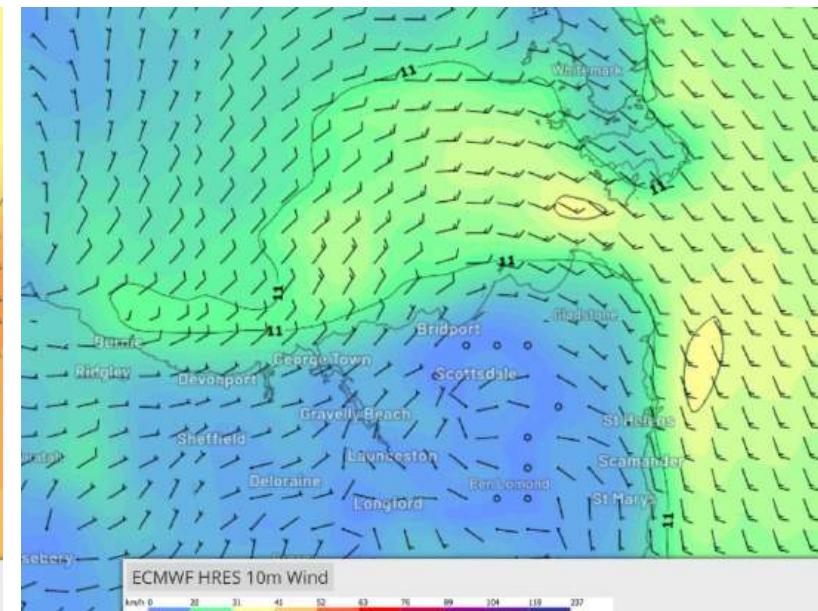
Sat 27th December



11am



5pm



11pm

A ridge of high pressure moves over Tasmania during today.

Chiefly light S'ly or variable winds early, becoming 5 to 12kt (ave) NW'ly from late morning/early afternoon. Winds then becoming NW to NE 5 to 10kt (ave) during the afternoon or lighter and more variable at times. Tending E to SE'ly in far eastern parts by late afternoon. Winds reaching S to SE'ly 15 to 20kt at times in Banks Strait and S of Swan Is by late evening.

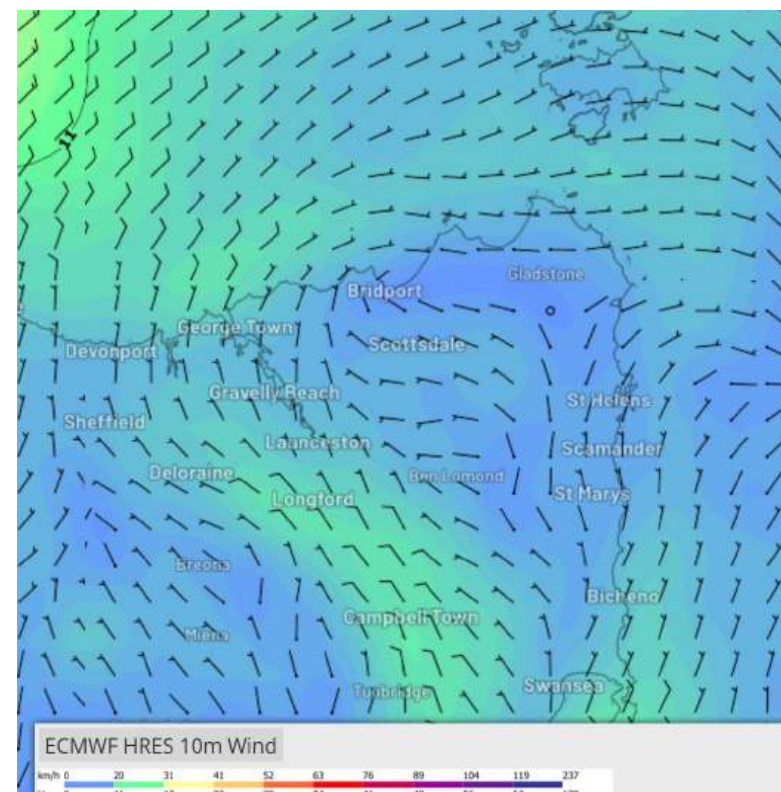
Wind waves: 0.5 to 1.0m (Hsig) rising up to 2.0m (Hsig) at times in far E parts.

Swell waves: from W up to 1.0m (Hsig), becoming S to SE 1.5 to 2.5m (Hsig) in far E parts.

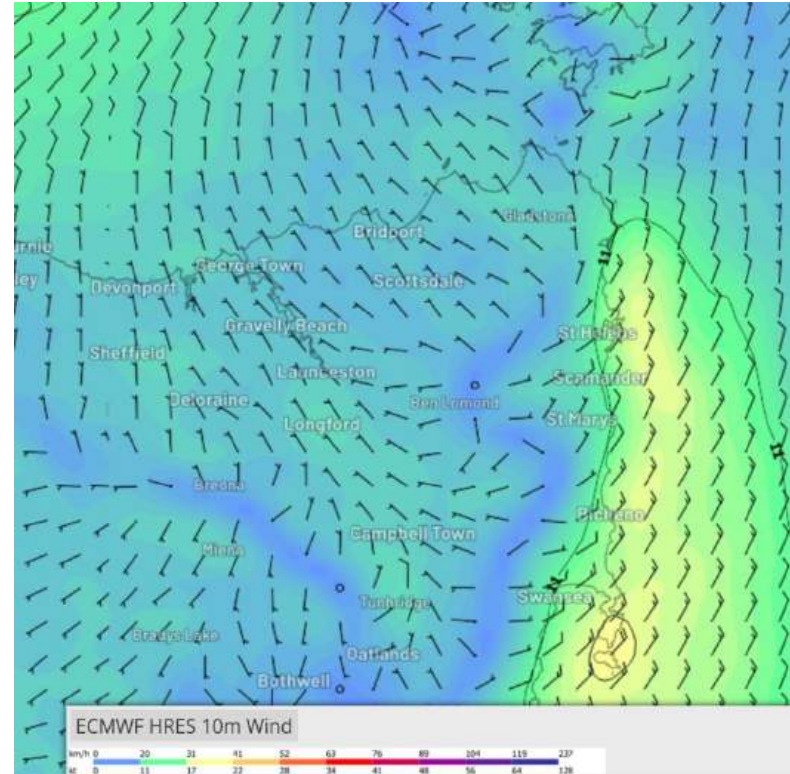
NOTE: Waves can be higher than forecast especially when ocean/tidal currents oppose wind/swell waves

Weather: Fine.

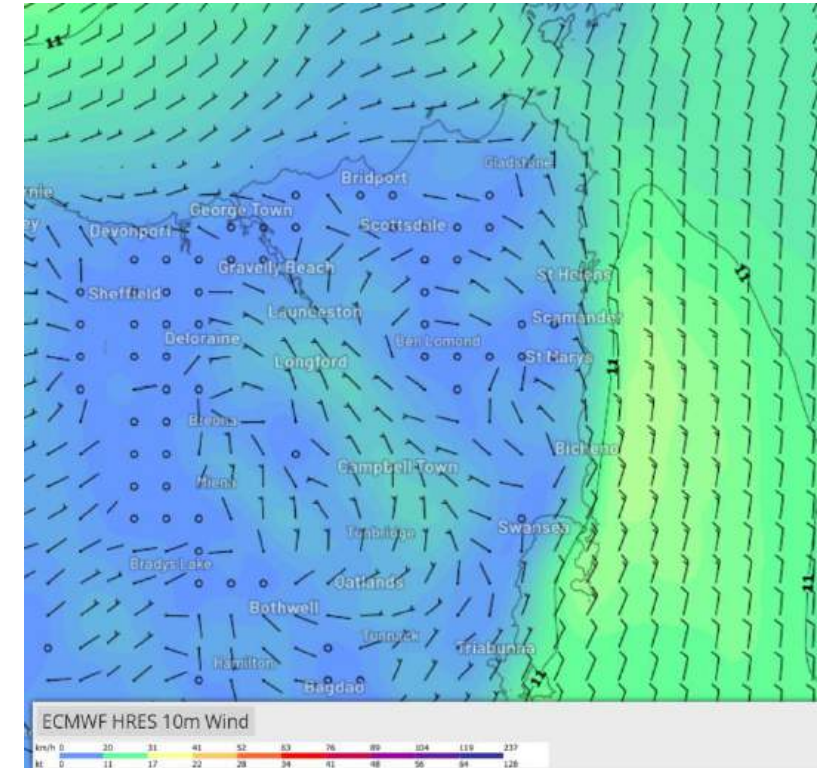
Sun 28th December



8am



2pm



11pm

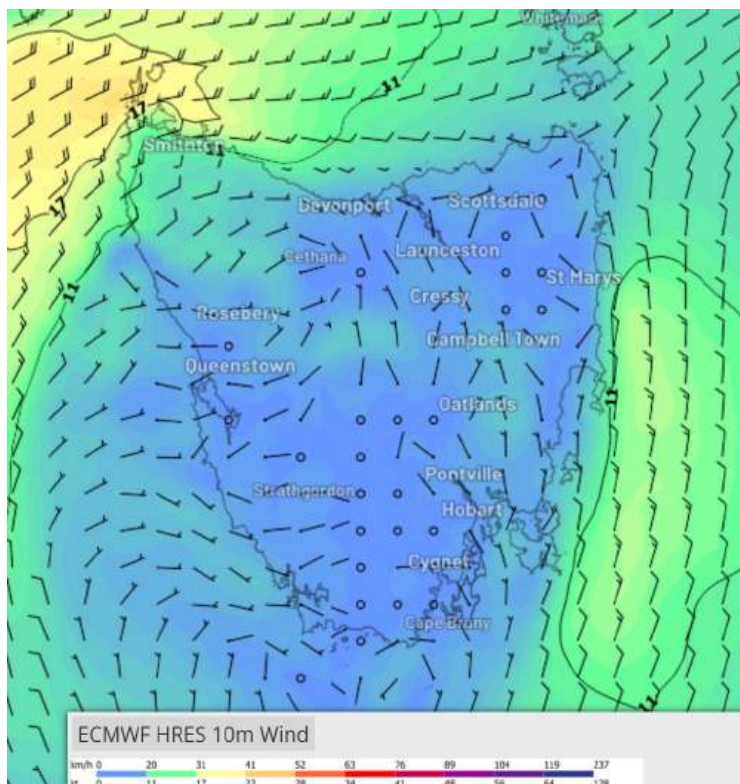
The ridge of high pressure slides eastward over Tasmania during the day. This allows a NE gradient flow over E parts. Winds becoming 4 to 8kt (ave) E'ly early morning and light and variable by about dawn. N to NE'ly at 5 to 15kt (ave) are expected to develop during the late morning/early afternoon and then ease to 5 to 12kt (ave) from mid to late evening.

Sea waves: 0.5 to 1.2m (Hsig)

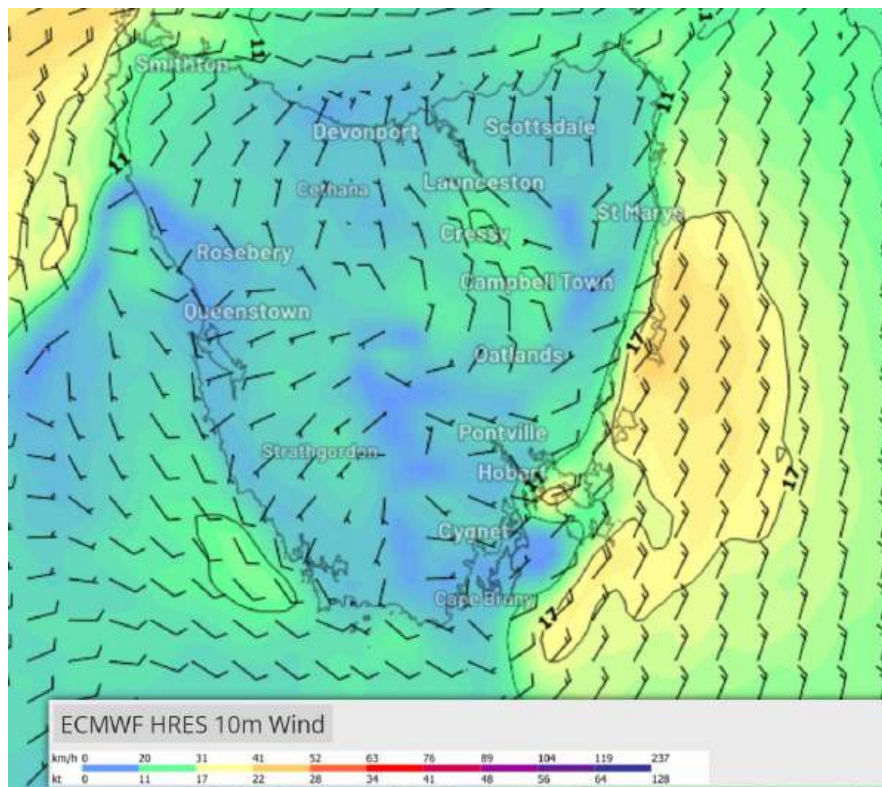
Swell waves: S'ly 1.5 to 2.5m (Hsig) at first, tending SE'ly 1.0 to 2.0m (Hsig) from late morning.

Weather: Cloudy at times.

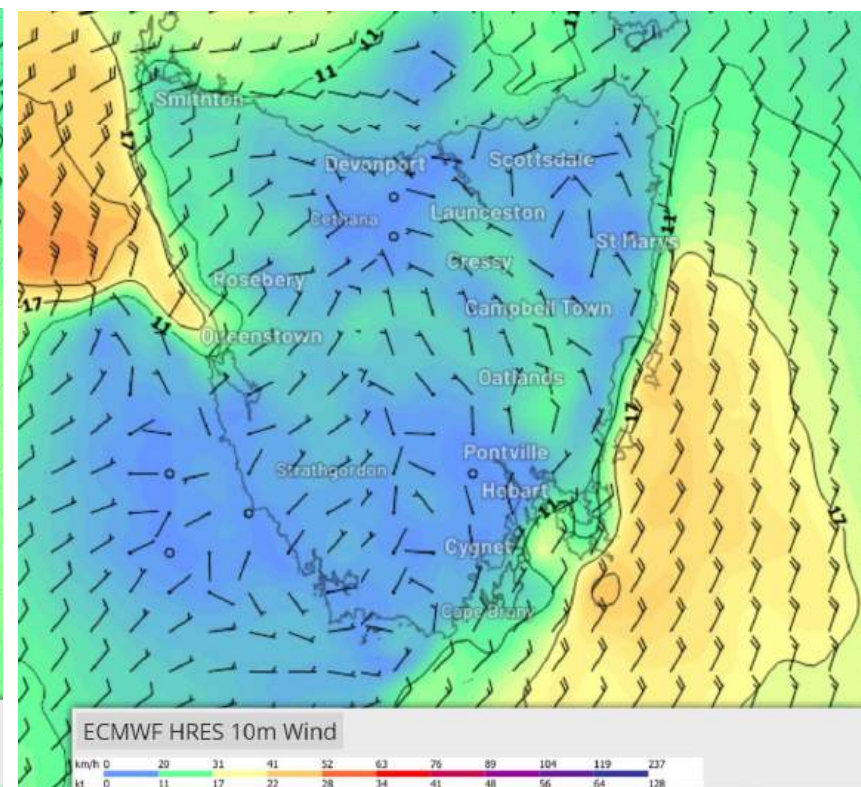
Mon 29th December



8am



5pm



11pm

The high pressure centre is expected to be situated E of Tasmania as a weakening cold front moves closer to Tasmania and slides south. N to NW winds 5 to 10kt (ave), or light and variable at times becoming N to NE at 15 to 20kt (ave) during the day especially S of about Bicheno.

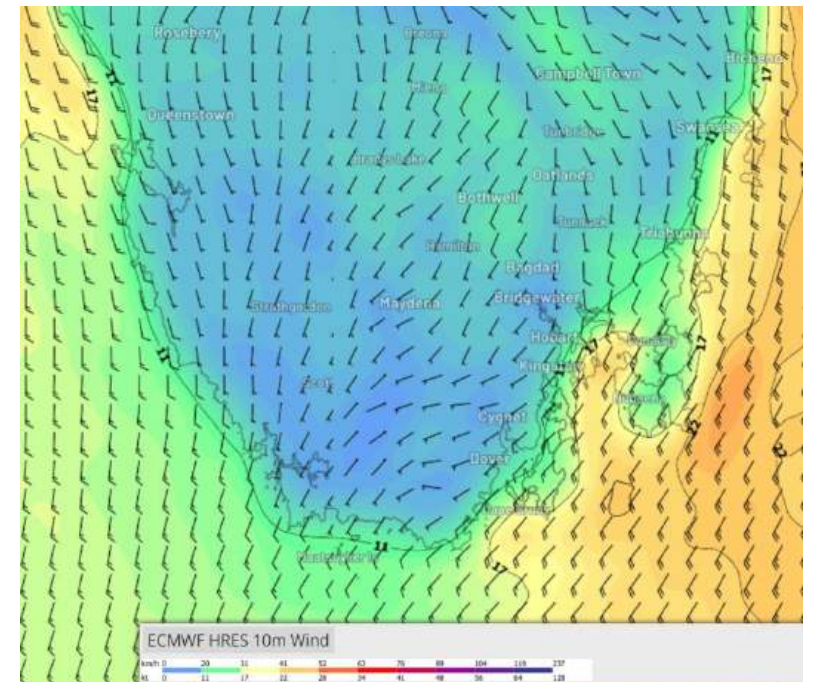
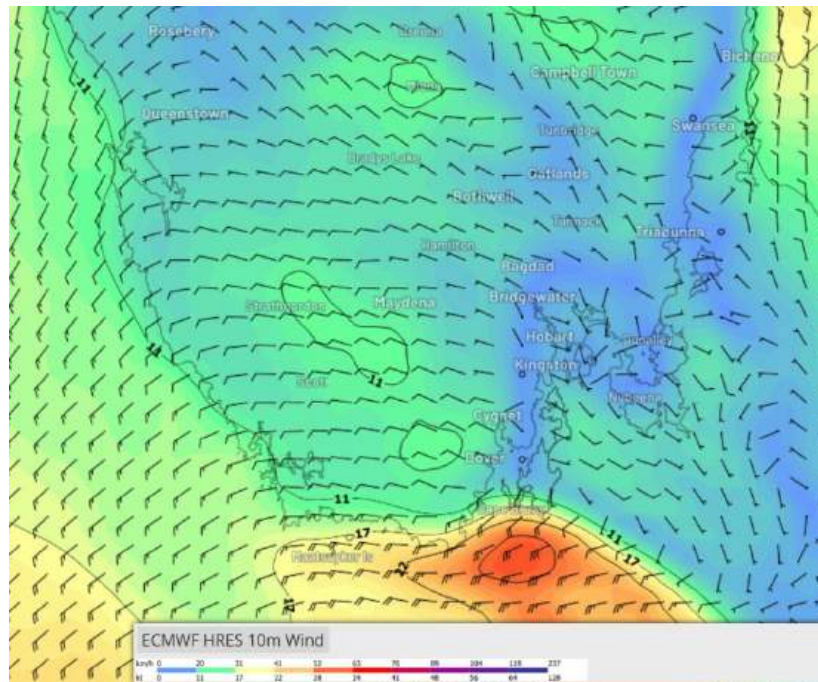
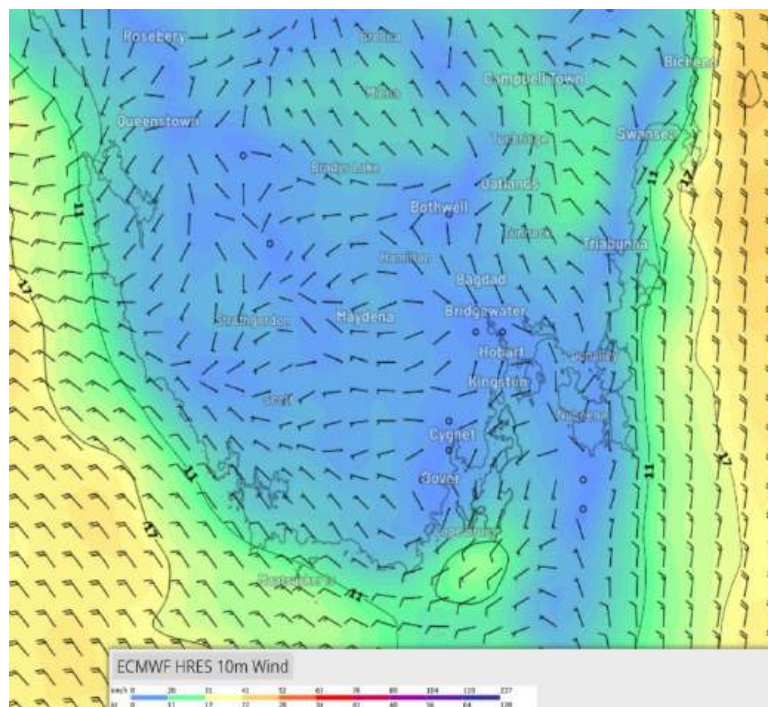
Winds are expected to be squally and erratic in vicinity of Tasman Island and winds may become lighter and more variable in the Derwent overnight.

Sea waves: 1.0 to 1.5m (Hsig)

Swell waves: from S to SE at 1.0 to 2.0m (Hsig) along E coast, tending W to SW'ly 1.0m to 2.0m (Hsig) in Storm Bay.

Weather: Fine and partly cloudy.

Tue 30th December



8am

2pm

11pm

A cold front moves over Tasmania during the day. Reaching Tasman Is at about 1600hr and then pushing up E coast.

NW to NE winds at 10 to 15kn (ave), reaching 20kt at times on E coast early. Winds light and variable in the Derwent and Storm Bay before late morning and afternoon light sea breezes develop ahead of a 15 to 25kt (ave) S to SW'ly change pushes through the race area.

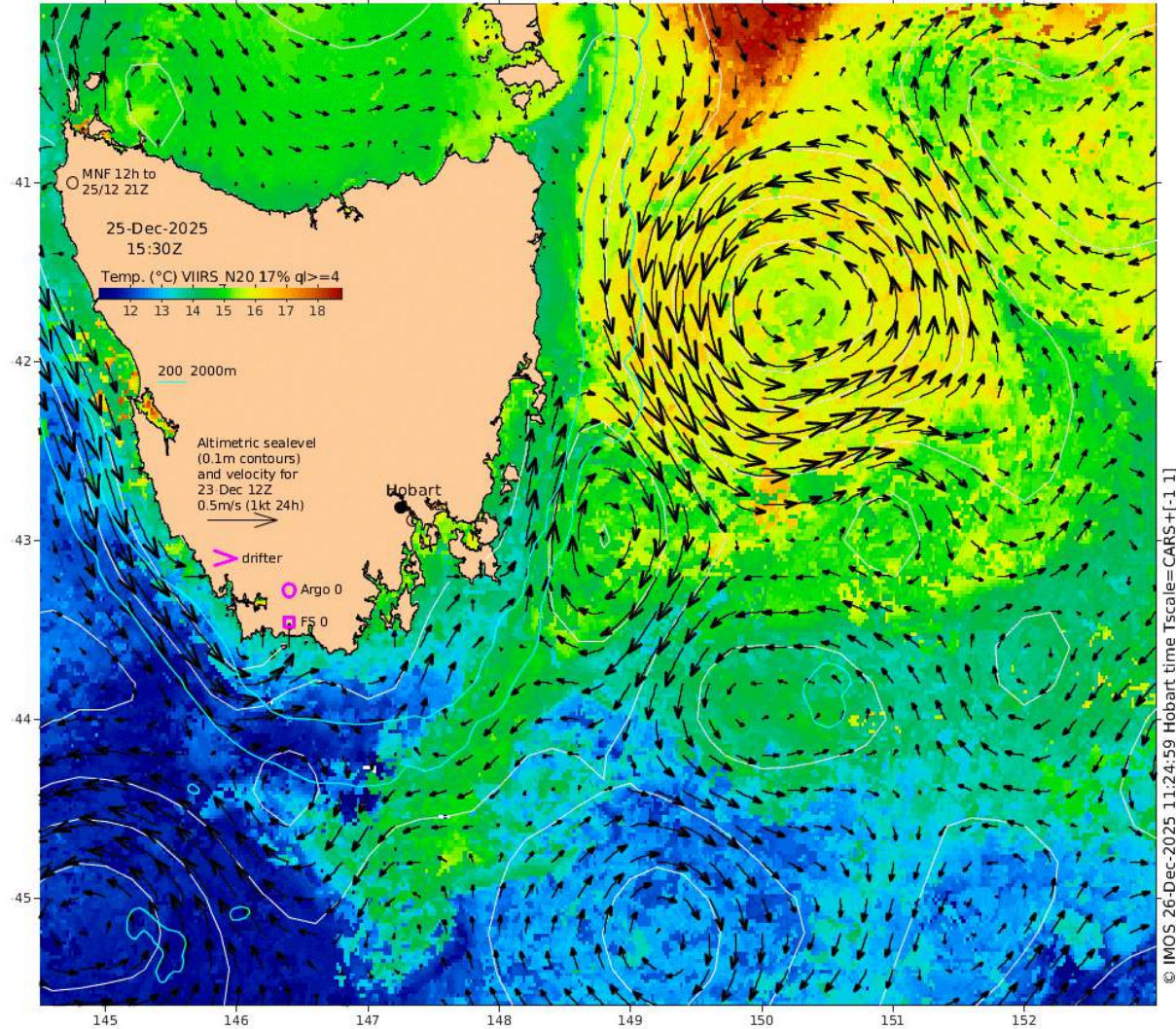
Winds squally and erratic in vicinity of Tasman Island and may become lighter and more variable in the Derwent overnight.

Sea waves: 0.5 to 1.0m (Hsig), rising 1.5 to 2.5m (Hsig) with the S to SW'ly change.

Swell waves: from S to SE to 1.5m (Hsig) on E coast, becoming W to SW'ly 1.0 to 2.0m (Hsig) in Storm Bay.

Weather: Cloudy. High risk of showers (winds can be gusty and erratic in heavy showers)

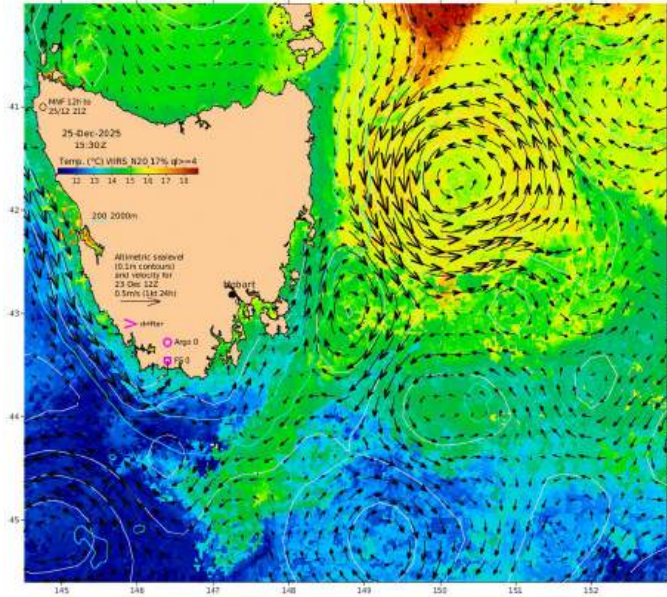
Latest CSIRO SSTs and Ocean Currents



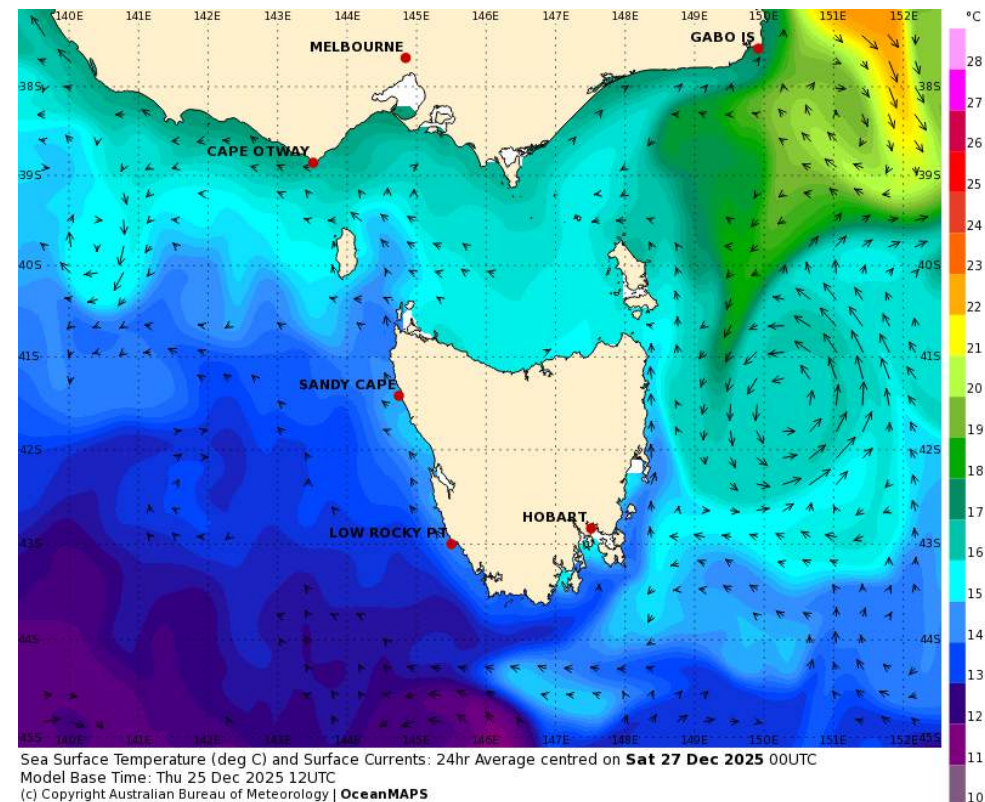
It would appear from the latest CSIRO sea surface temperature analysis that there will be moderate current flow against you S of about Cape Tourville. And weak against you N of Cape Tourville.

[SST IMOS-OceanCurrent](#)

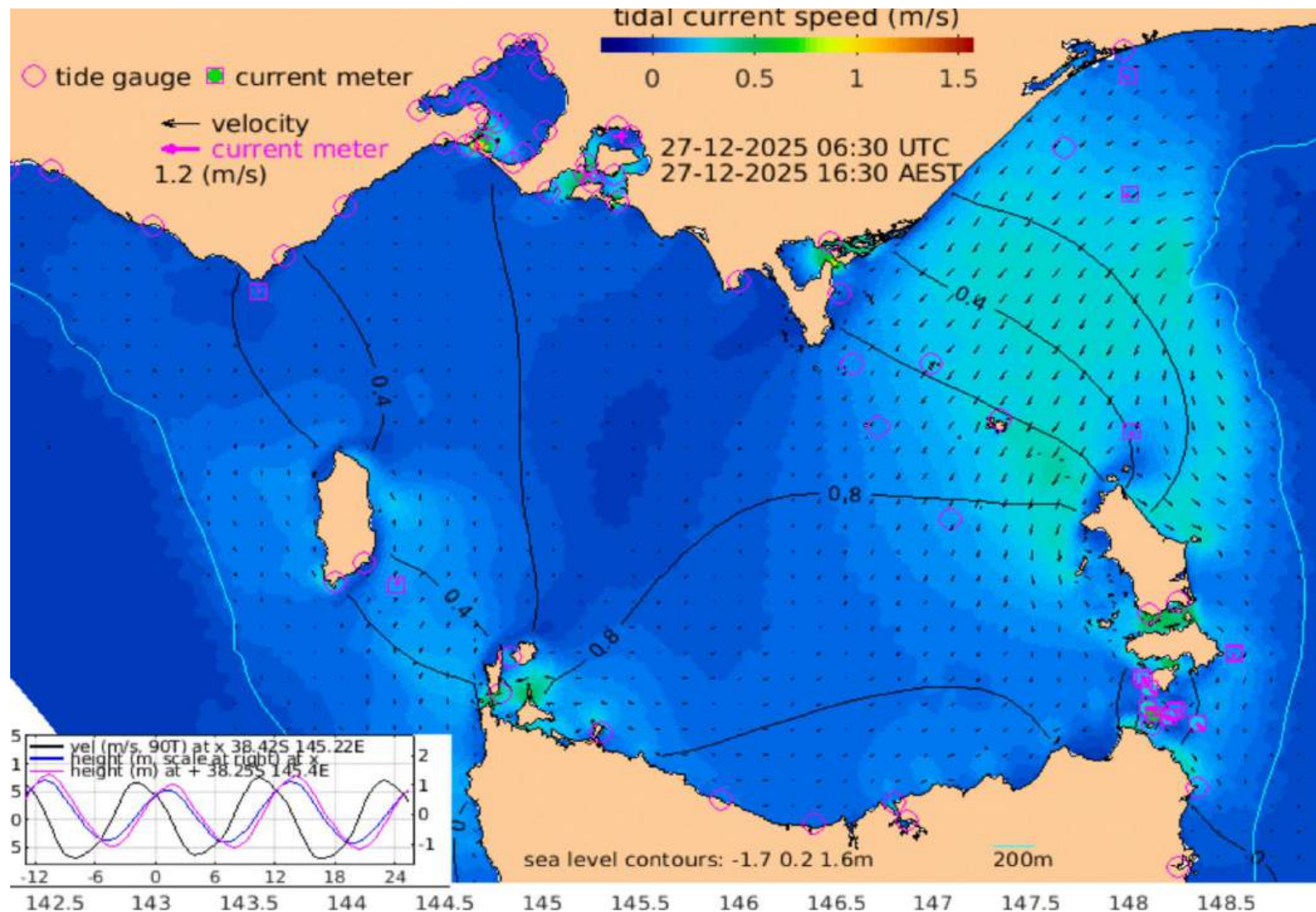
Bureau of Met Ocean Current prediction Victoria and Tasmania (bom.gov.au)



Latest CSIRO SST/Ocean current analysis (from previous slide)



According to this forecast product from the CSIRO/Bureau of Meteorology. It shows a weak to moderate (S of Cape Tourville) current against you along the east coast



Tidal Flow in Banks Strait running from the east becomes slack around 17:30 LT on 27th before running from the west.

More information at <https://oceancurrent.aodn.org.au/tides/index.htm>

SAT 27 DEC

HIGH

5:22 am
3.34 m

LOW

11:44 am
1.01 m

HIGH

5:29 pm
3.17 m

LOW

11:54 pm
0.78 m

Tide at Low Head

SAT 27 DEC



SUN 28 DEC

HIGH

4:02 am
1.31 m

LOW

10:03 am
0.42 m

HIGH

4:07 pm
1.32 m

LOW

10:28 pm
0.28 m

HIGH

4:50 am
1.35 m

LOW

11:02 am
0.36 m

HIGH

5:09 pm
1.30 m

LOW

11:18 pm
0.33 m

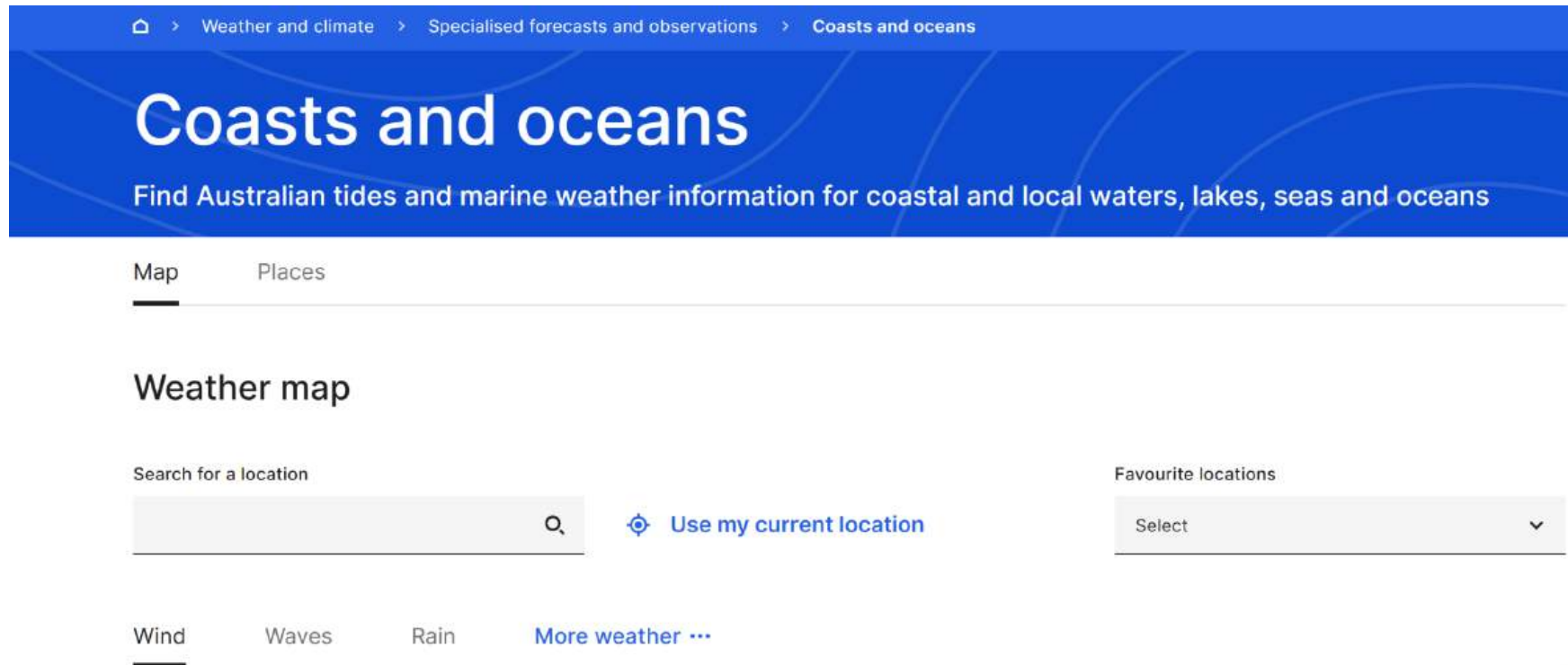
Tides at
Swan
Island

MON 29 DEC		TUE 30 DEC		WED 31 DEC	
HIGH	4:01 am 1.36 m	HIGH	4:35 am 1.45 m	HIGH	5:15 am 1.53 m
LOW	10:56 am 0.64 m	LOW	11:56 am 0.49 m	LOW	12:55 pm 0.36 m
HIGH	4:26 pm 1.01 m	HIGH	5:54 pm 0.98 m	HIGH	7:23 pm 0.99 m
LOW	9:46 pm 0.69 m	LOW	10:23 pm 0.77 m	LOW	11:01 pm 0.85 m

Tides in Hobart

Update your weather information

[Marine & Ocean \(bom.gov.au\)](https://bom.gov.au) the one stop shop



The screenshot shows the 'Coasts and oceans' section of the BOM website. At the top, a blue navigation bar contains the breadcrumb: Home > Weather and climate > Specialised forecasts and observations > Coasts and oceans. Below this, a large blue header features the title 'Coasts and oceans' and the subtitle 'Find Australian tides and marine weather information for coastal and local waters, lakes, seas and oceans'. A secondary navigation bar has 'Map' (selected) and 'Places'. The main content area is titled 'Weather map' and includes a search bar with the placeholder 'Search for a location', a magnifying glass icon, and a link 'Use my current location' with a location pin icon. To the right is a 'Favourite locations' dropdown menu with the text 'Select' and a downward arrow. At the bottom, a horizontal menu shows 'Wind' (selected), 'Waves', 'Rain', and 'More weather ...'.

Weather and climate > Specialised forecasts and observations > Coasts and oceans

Coasts and oceans

Find Australian tides and marine weather information for coastal and local waters, lakes, seas and oceans

Map Places

Weather map

Search for a location

Use my current location

Favourite locations

Select

Wind Waves Rain More weather ...

Last Bit

- Always keep abreast of the weather via radio sources including radio skeds, the internet (plenty of weather sites including the Bureau of Meteorology) and never forget the Eye Ball Mk1 method.
- Remember in forecasts and warnings that the average wind speed and the Significant Wave Height (Hsig) is forecast. Be aware that wind gusts can be up to 40% more (in thunderstorms it can be up to 150% more) than the average. Wave heights can be higher, up to twice the Hsig and lower than the Hsig. Wave heights can be horrific in situations where wind/swell waves oppose tidal and ocean currents.
- Winds can be locally stronger/lighter in a lot of areas, but locally stronger in Banks Strait under broad easterly and westerly flow and Tasman Island in most wind flows.
- Have a great but safe race