



Launceston to Hobart Yacht Race 2024

Weather Forecast

Issued by Kenn Batt at 1500hr 26/12/2024

Most products used in this briefing have been sourced from the Bureau of Meteorology, Weatherzone and the CSIRO

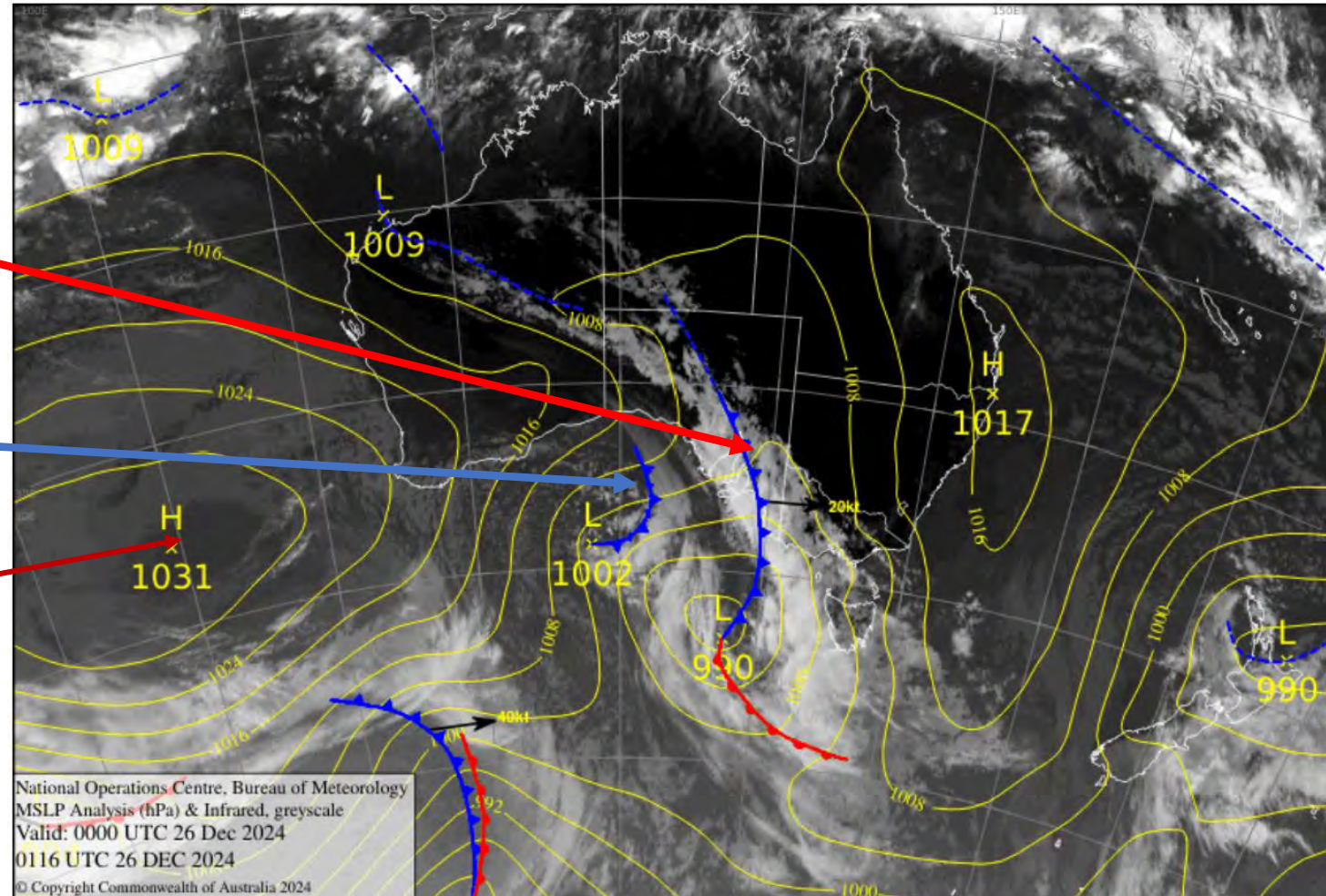


Latest Surface Isobaric Chart

A cold front moving through South Australia is creating low to mid level cloud that extends across the interior of the state, down into a low to the south..

Another cold front with a thick band of low level cloud is just brushing against the western South Australian coast, bringing patchy low level cloud onshore in its wake.

A high pressure system lying to the SW of Perth, is moving eastward.



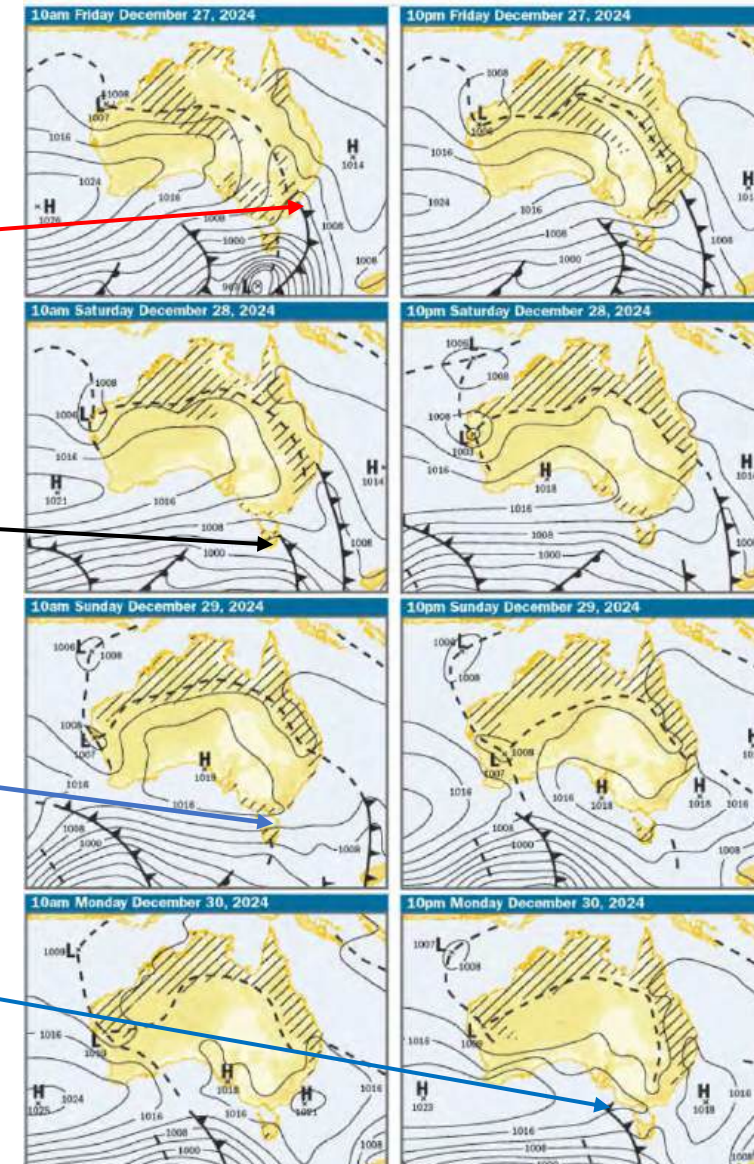
Forecast Charts for next few days

A cold front will cross Tasmania on Friday morning, bringing a very vigorous westerly change through Bass/Banks Straits.

Early on Saturday, a cold front/trough of low pressure embedded in the westerly stream is expected cross the state.

A weak trough is expected to cross the state on Sunday. This will be followed by a ridge of high pressure.

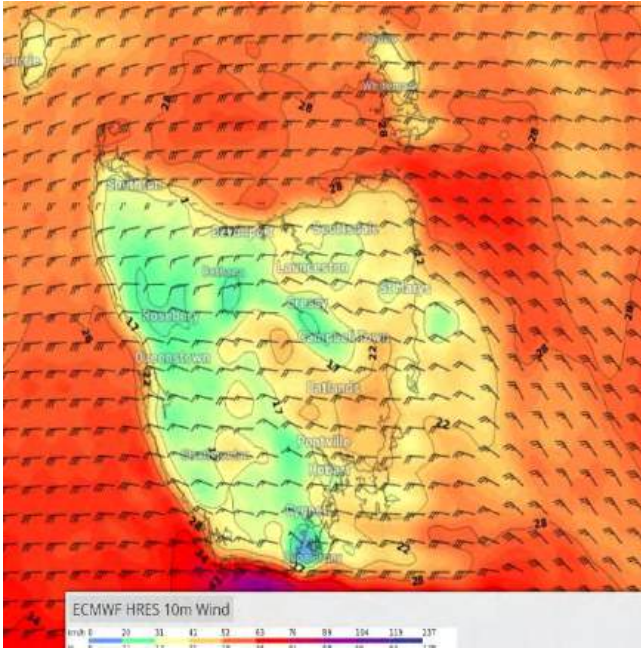
Late on Monday, yet another cold front is expected to cross over Tasmania.



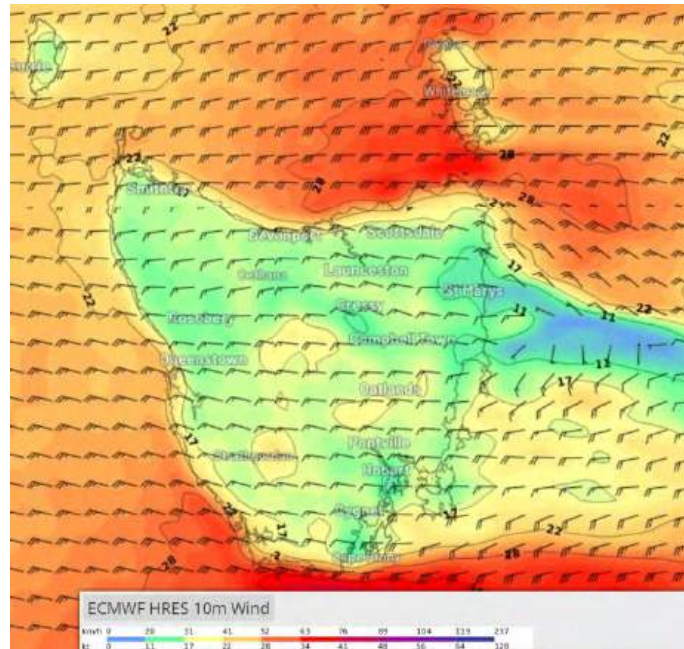
Forecast Winds, etc

- ECMWF Forecast winds below are courtesy of Weatherzone (subscription service) [Weatherzone Layers](#)
- My current model of choice is the ECMWF model. The other model ACCESS G is also pretty much on the money. Differences exist with timing and intensities of systems (this is pretty normal though).
- This is shaping up to be a testy race down the Tassie E coast. There may be a number of parking lots at times, particularly in closer to the coast under the broad westerly flow.
- Check out Windy.com for ECMWF and ACCESS G (and other) models.
- **Update** weather forecasts and **warnings regularly** via the internet and radio sources.
- Timing and intensities of weather systems noted in the briefing may change?

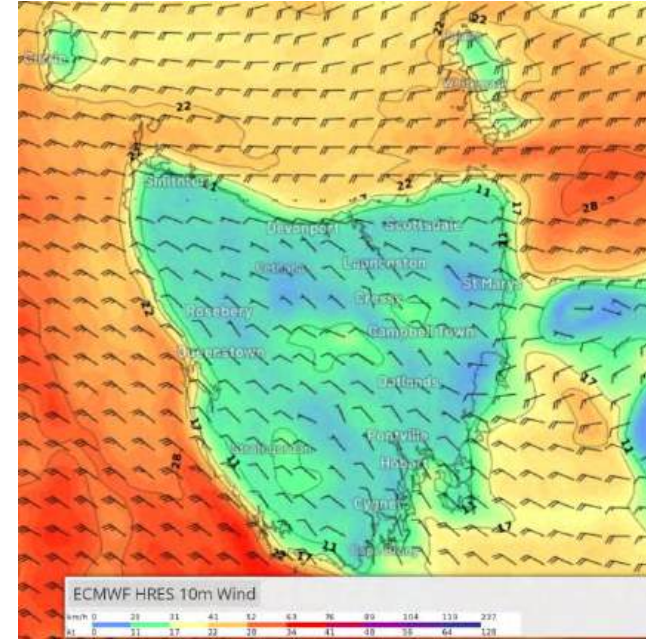
27th December



11am



5pm



11pm

A cold front is expected to move over E Bass Strait during this morning. It moves eastward during the day.

Wind: **Gale Warning current.** Broad westerly flow at 25-30kt (ave), becoming 30-35 kt (ave) and gusty at times.

Winds becoming squally and erratic in heavier showers over short time periods.

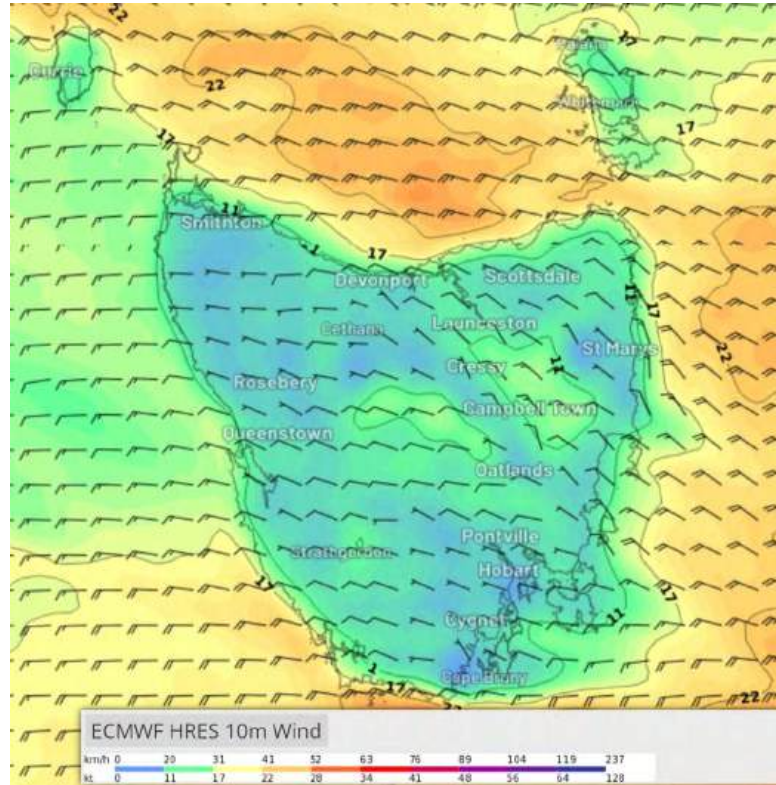
Sea waves: 2.0 to 3.0m (Hsig), higher in gusts/squalls

Swell waves: from W 1.0 to 2.0m (Hsig). An E-NE'ly 1.0 to 1.5m (Hsig) swell in NE Tassie parts.

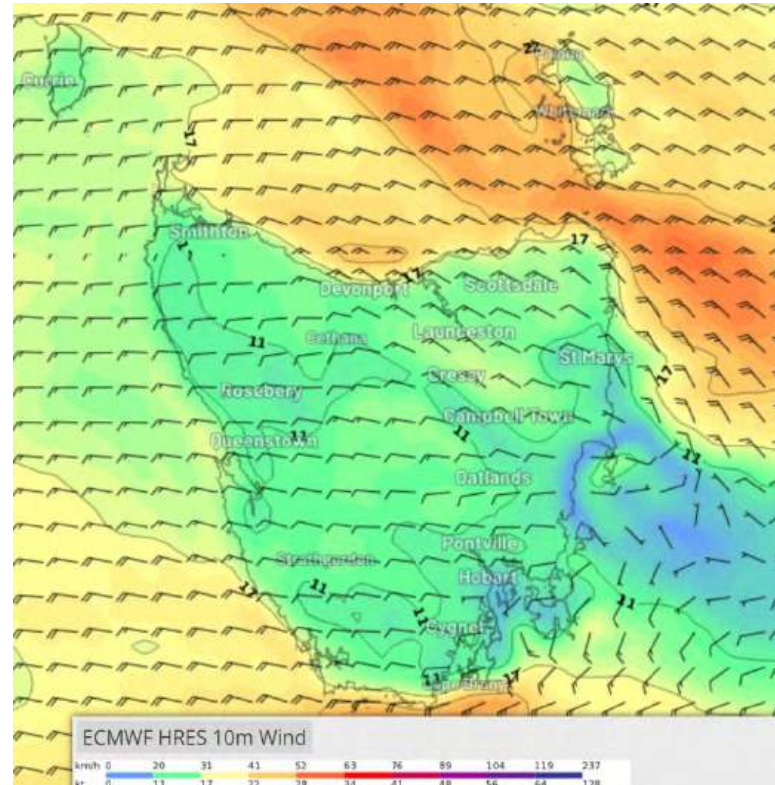
NOTE: Waves can be higher than forecast especially when ocean/tidal currents oppose wind/swell waves

Weather: Cloudy with showers.

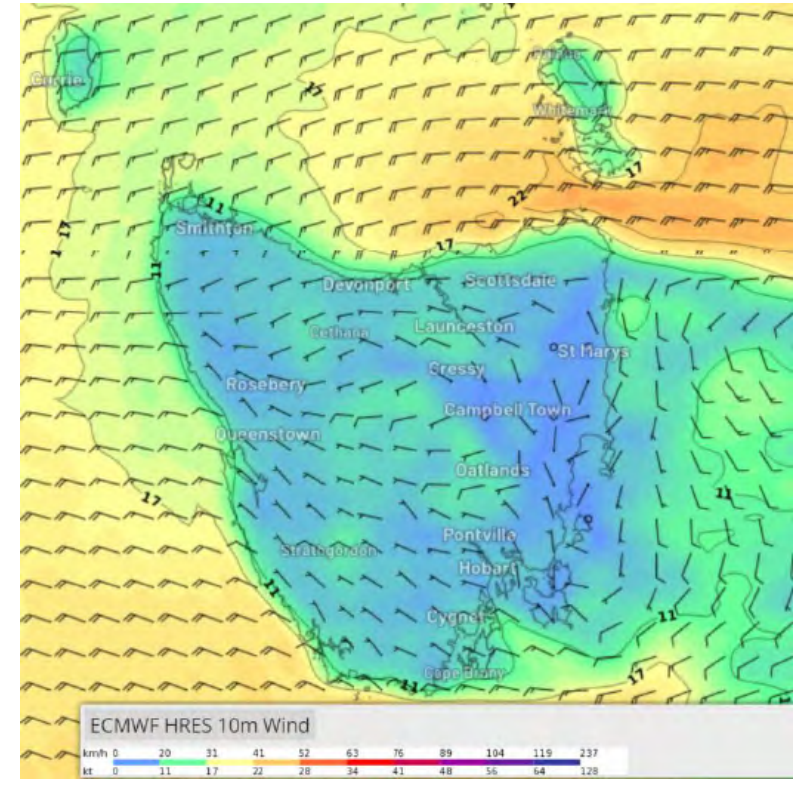
28th December



8am



2pm



11pm

A cold front pushes through Tasmania during mid-afternoon on Thursday. **Risk of Strong Wind Warning current for NE parts of Tassie early?**

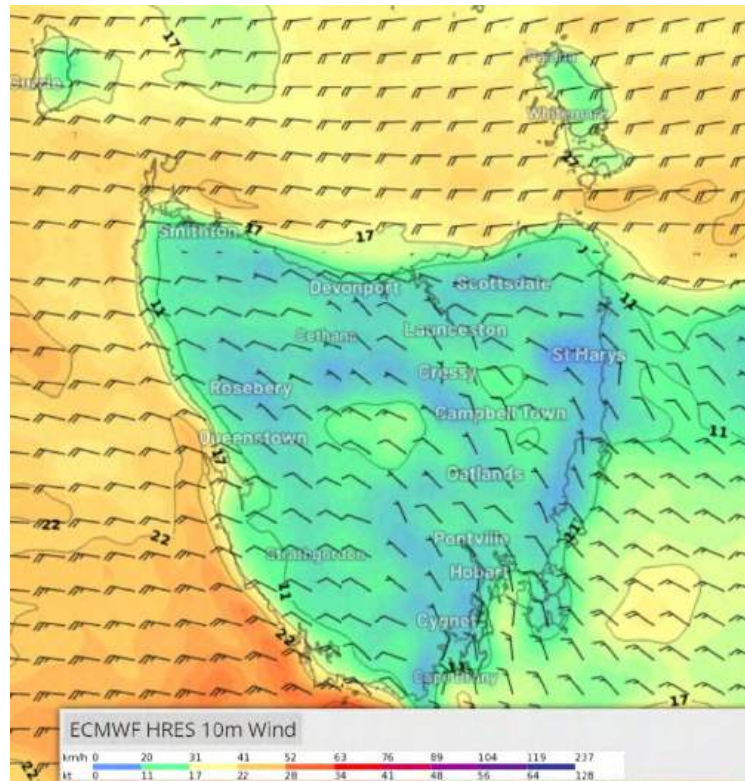
Winds: W'ly winds at 20-25kt (ave) W'ly, turn NW'ly during the morning ahead of the front. Winds tend W'ly behind the front and become lighter S'ly along the E Tassie coast. Local coastal afternoon NE sea breezes possible. Tricky stuff. Winds gusty/squally and erratic in heavy showers and thunderstorms.

Sea waves: 2.0 to 2.5m decreasing to around 1.0m (Hsig) along the Tassie coast by evening.

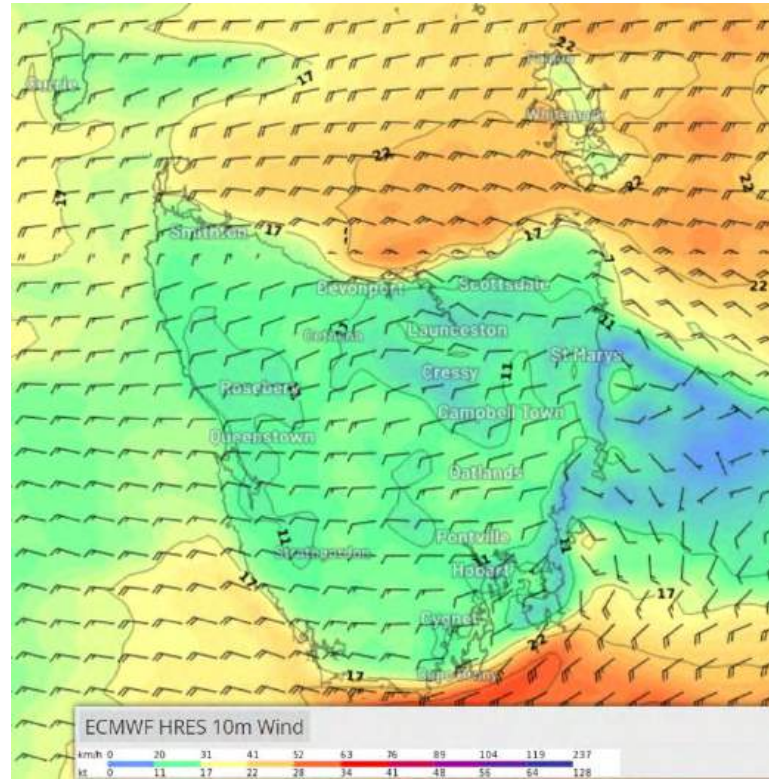
Swell waves: E-NE 1 to 2m (Hsig) NE Tassie, tending S'ly around 1.0m (Hsig) further S along the E Tassie coast.

Weather: Moderate chance of showers. Low- moderate risk of a thunderstorm.

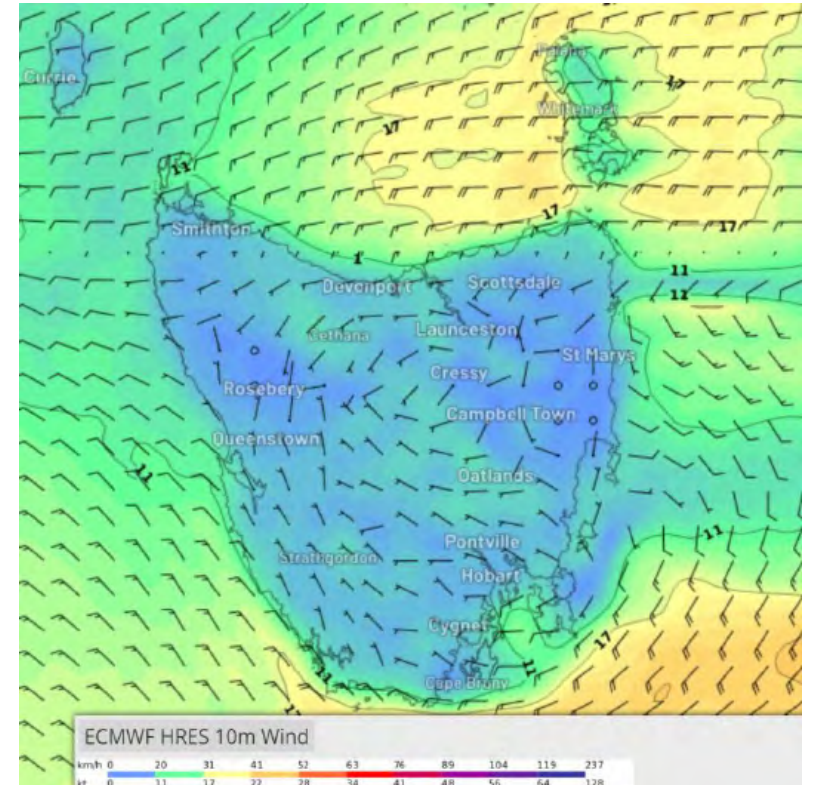
29th December



8am



5pm



11pm

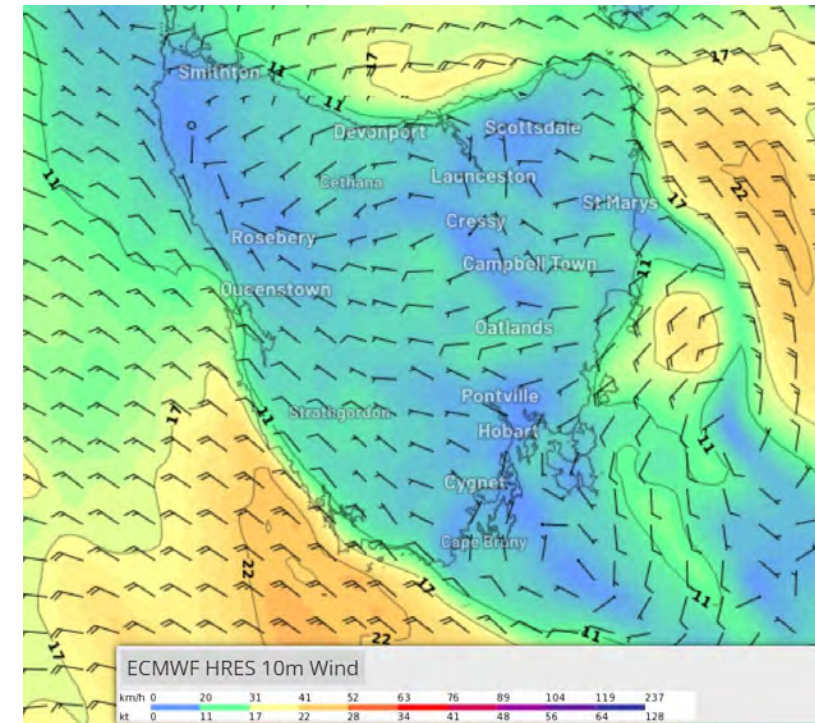
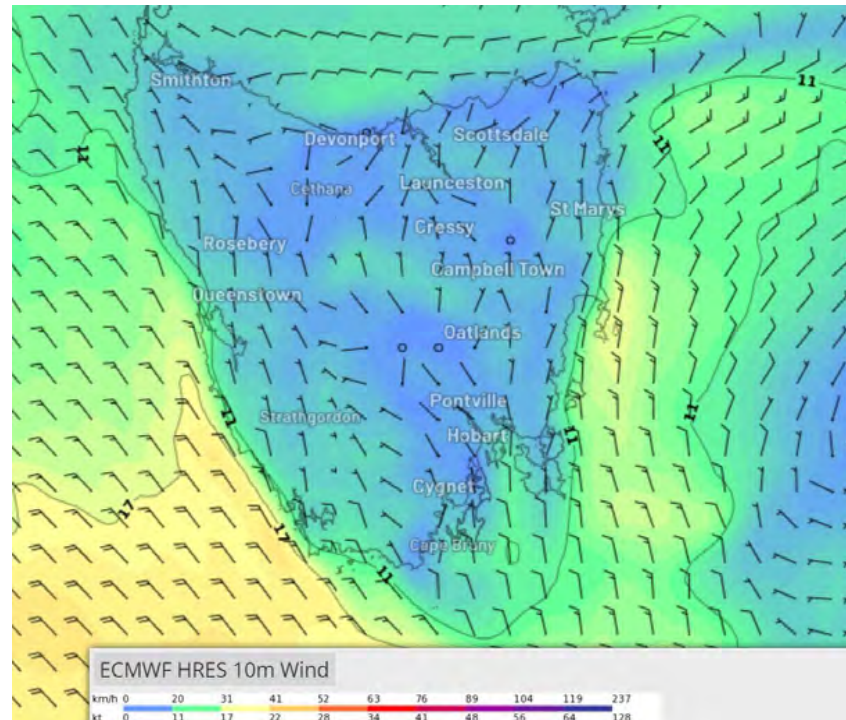
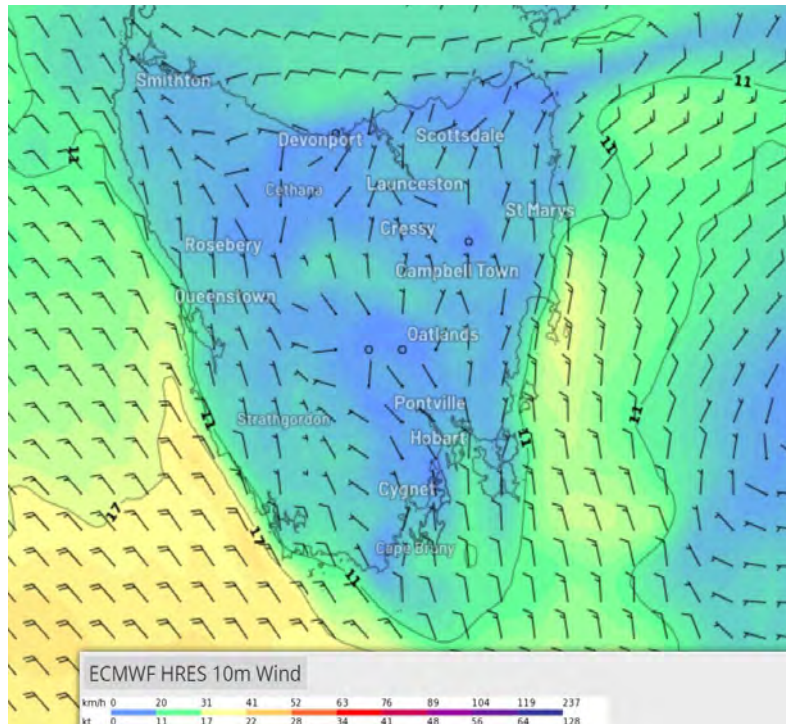
Winds: A weak trough moves through the state during the day. The winds today will depend upon where you are along the E Tassie coast. 5-15kt (ave) NW winds in NE parts become SW-S 10-20kt (ave) in far southern parts. In between, lighter and more variable winds due to the blocking effect of the Tasmanian Central Plateaux under broad W'ly flow. Being close to E Tassie coast comes with it problems. Read <https://ryct.org.au/wp-content/uploads/2021/04/25-Tricky-Tassie-Coast-Kenn-Batt-Alasdair-Hainsworth.pdf>. Winds locally stronger and more variable around Tasman Island and lighter and variable in the Derwent especially overnight. Local afternoon coastal sea breezes possible.

Sea waves: up to 1.5m (Hsig) in N and S parts. Below 1m (Hsig) in between.

Swell waves: from S around 1m (Hsig), tending SW 1.0 to 2.0m (Hsig) in Storm Bay.

Weather: Partly cloudy. Slight-moderate chance of a shower.

30th December



8am

2pm

11pm

A cold front moves through Tasmania late today. This feature will freshen the N to NE flow over the State ahead of it.

Winds: The wind direction is expected to tend more SW to southerly along the E Tassie coast during the afternoon and evening and tend more variable over SE parts by late evening. Local afternoon coastal sea breezes possible.

Winds are expected to be more fickle in the Derwent, especially overnight.

Sea waves: up to 1.2m (Hsig)

Swell waves: from S around 1m (Hsig), tending SW up to 2.0m (Hsig) in Storm Bay.

Weather: Partly cloudy. Slight chance of a shower.

Weather forecasts for selected areas

North Tamar

Friday 27 December



Min 15 Max 18

Shower or two. Windy.

Possible rainfall: 0 to 2 mm

Chance of any rain: 60%

Central North area

Medium chance of showers, most likely in the early morning. Mostly sunny afternoon. Winds north to northwesterly 20 to 25 km/h turning westerly 30 to 45 km/h early in the morning then tending west to northwesterly 25 to 35 km/h in the evening. Overnight temperatures falling to between 11 and 14 with daytime temperatures reaching between 18 and 21.

Sun protection recommended from 9:00 am to 5:20 pm, UV Index predicted to reach 10 [Very High]

St Helens

Friday 27 December



Min 16 Max 23

Wind easing. Mostly sunny.

Possible rainfall: 0 to 1 mm

Chance of any rain: 30%

Slight chance of a shower, most likely in the early morning. Mostly sunny day. Winds northerly 20 to 25 km/h turning west to northwesterly 25 to 40 km/h early in the morning then decreasing to 15 to 25 km/h in the early afternoon.

Sun protection recommended from 8:50 am to 5:20 pm, UV Index predicted to reach 10 [Very High]

Saturday 28 December



Min 11 Max 19

Shower or two.

Possible rainfall: 0 to 2 mm

Chance of any rain: 50%

Partly cloudy. Medium chance of showers, most likely in the morning and afternoon. Winds northwesterly 20 to 30 km/h becoming light during the evening.

Sun protection recommended from 8:50 am to 5:10 pm, UV Index predicted to reach 10 [Very High]

Sunday 29 December



Min 11 Max 23

Partly cloudy.

Possible rainfall: 0 to 1 mm

Chance of any rain: 30%

Partly cloudy. Slight chance of a shower in the morning and afternoon. Winds northwest to southwesterly 15 to 25 km/h tending southeast to southwesterly 15 to 20 km/h during the evening.

Maria Island

Saturday 28 December



Min 13 Max 19

Shower or two.

Possible rainfall: **0 to 3 mm**

Chance of any rain: **60%**

East Coast area

Cloudy. Medium chance of showers, most likely in the morning and afternoon. Winds northwesterly 20 to 30 km/h turning westerly 15 to 25 km/h during the afternoon. Overnight temperatures falling to between 6 and 11 with daytime temperatures reaching between 17 and 21.

Sun protection recommended from 8:50 am to 5:20 pm, UV Index predicted to reach 9 [Very High]

Sunday 29 December



Min 13 Max 22

Possible shower.

Possible rainfall: **0 to 1 mm**

Chance of any rain: **40%**

East Coast area

Partly cloudy. Medium chance of showers in the morning and afternoon. Winds west to northwesterly 15 to 25 km/h tending west to southwesterly during the afternoon then becoming light during the evening. Overnight temperatures falling to between 6 and 11 with daytime temperatures reaching the low 20s.

Sun protection recommended from 9:00 am to 5:30 pm, UV Index predicted to reach 10 [Very High]

Monday 30 December



Min 14 Max 21

Partly cloudy.

Chance of any rain: **10%**

Hobart

Sunday 29 December



Min 11 Max 22

Shower or two.

Possible rainfall: **0 to 1 mm**

Chance of any rain: **50%**

Hobart area

Partly cloudy. Medium chance of showers, most likely in the morning and afternoon. Winds northwesterly 15 to 20 km/h turning westerly 20 to 30 km/h during the morning then becoming light during the evening.

Sun protection recommended from 9:00 am to 5:30 pm, UV Index predicted to reach 10 [Very High]

Monday 30 December



Min 12 Max 25

Partly cloudy.

Chance of any rain: **20%**

Hobart area

Mostly sunny morning. Slight chance of a shower later in the day. Light winds becoming southeasterly 15 to 20 km/h during the day.

Tuesday 31 December



Min 15 Max 22

Possible shower.

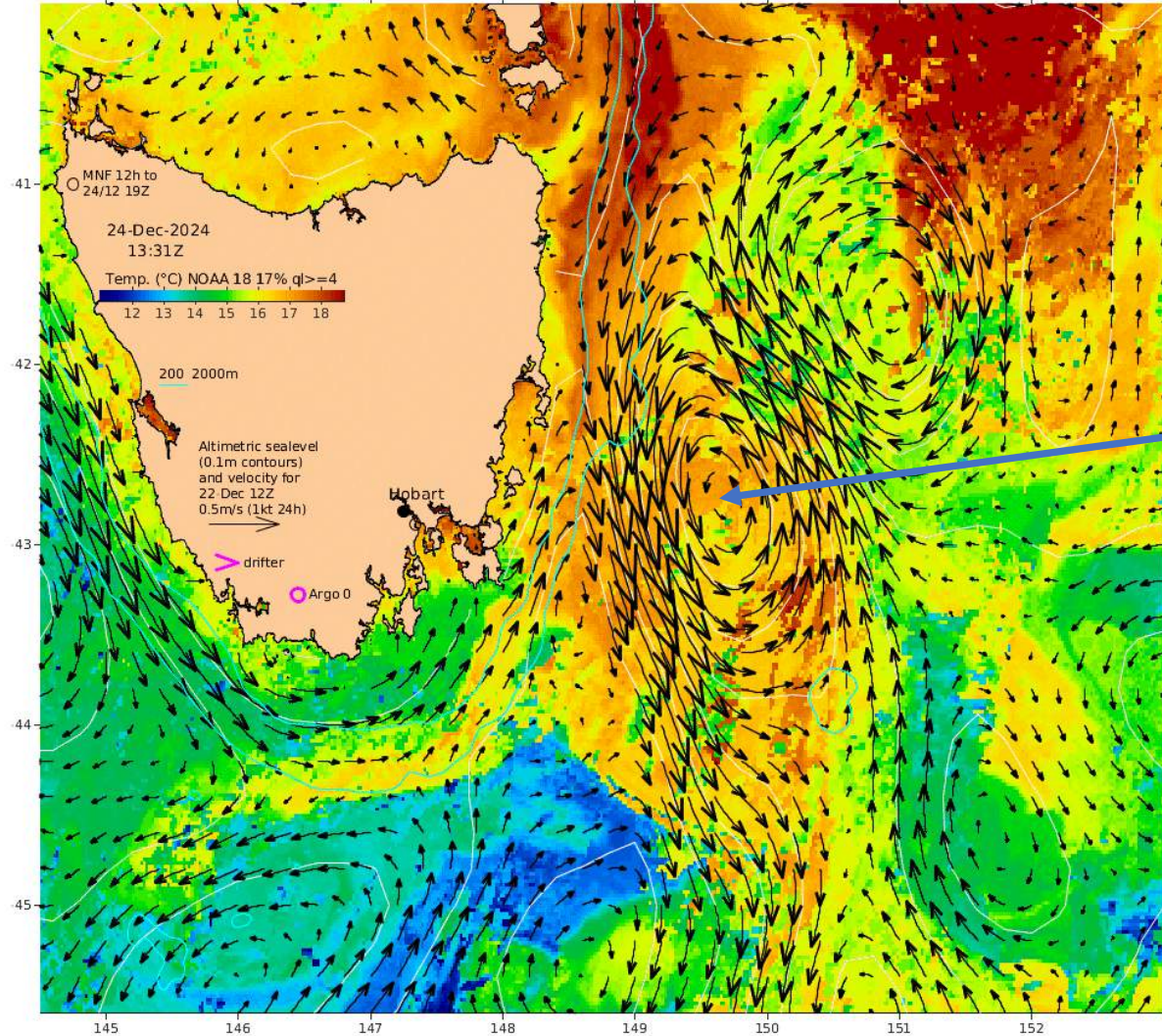
Possible rainfall: **0 to 1 mm**

Chance of any rain: **40%**

Hobart area

Partly cloudy. Medium chance of showers. Winds west to northwesterly 15 to 20 km/h turning south to southwesterly 15 to 25 km/h during the morning.

Latest CSIRO SSTs and Ocean Currents

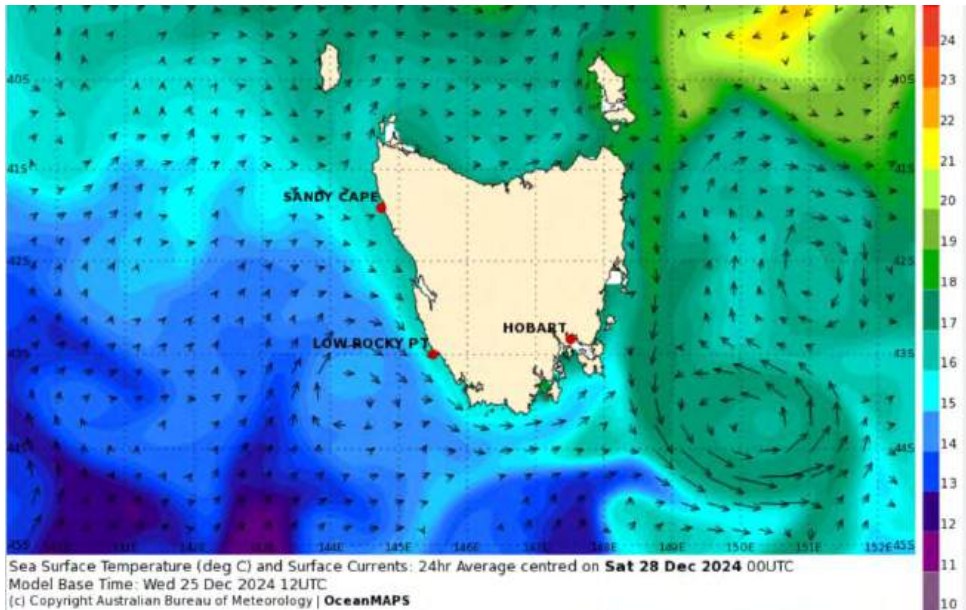


It would appear from the latest CSIRO sea surface temperature analysis that there will be strongest ocean current flow with you at the Shelf and eastward toward the warm eddy. Closer into the coast, there appears to be weak current with you or variable until around Bicheno. South from Bicheno, the ocean current turns against you with speeds up to about 1.5kt at times.

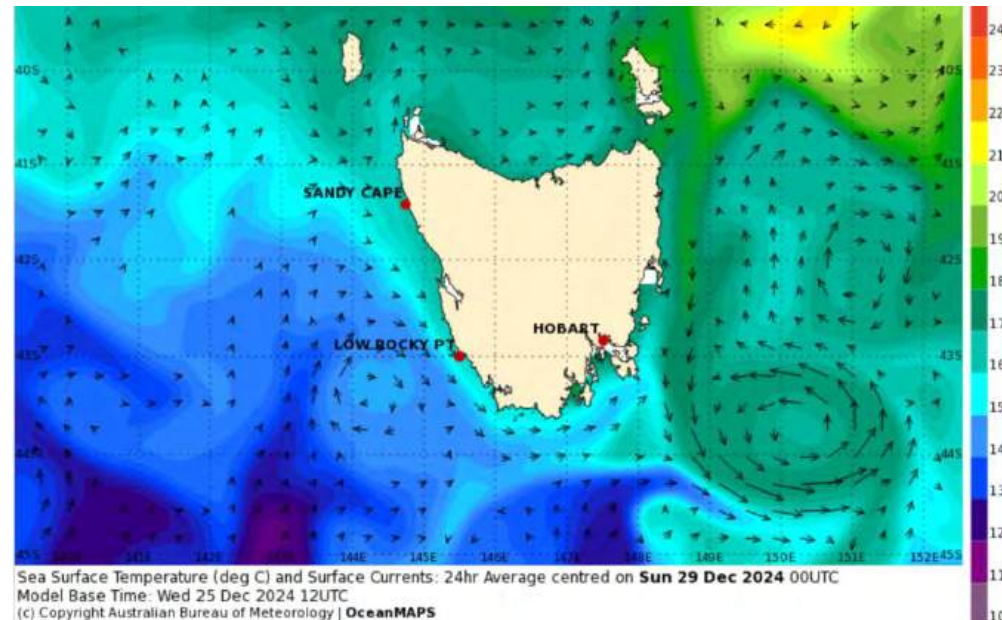
[SST IMOS-OceanCurrent](#)

Bureau of Met Ocean Current prediction Victoria and Tasmania (bom.gov.au)

This lower resolution model product from the CSIRO/Bureau of Meteorology for the 28th and 29th December. Is hinting at what the previous slide is indicating. These products can at times be different from what you at sea are observing. Be very vigilant



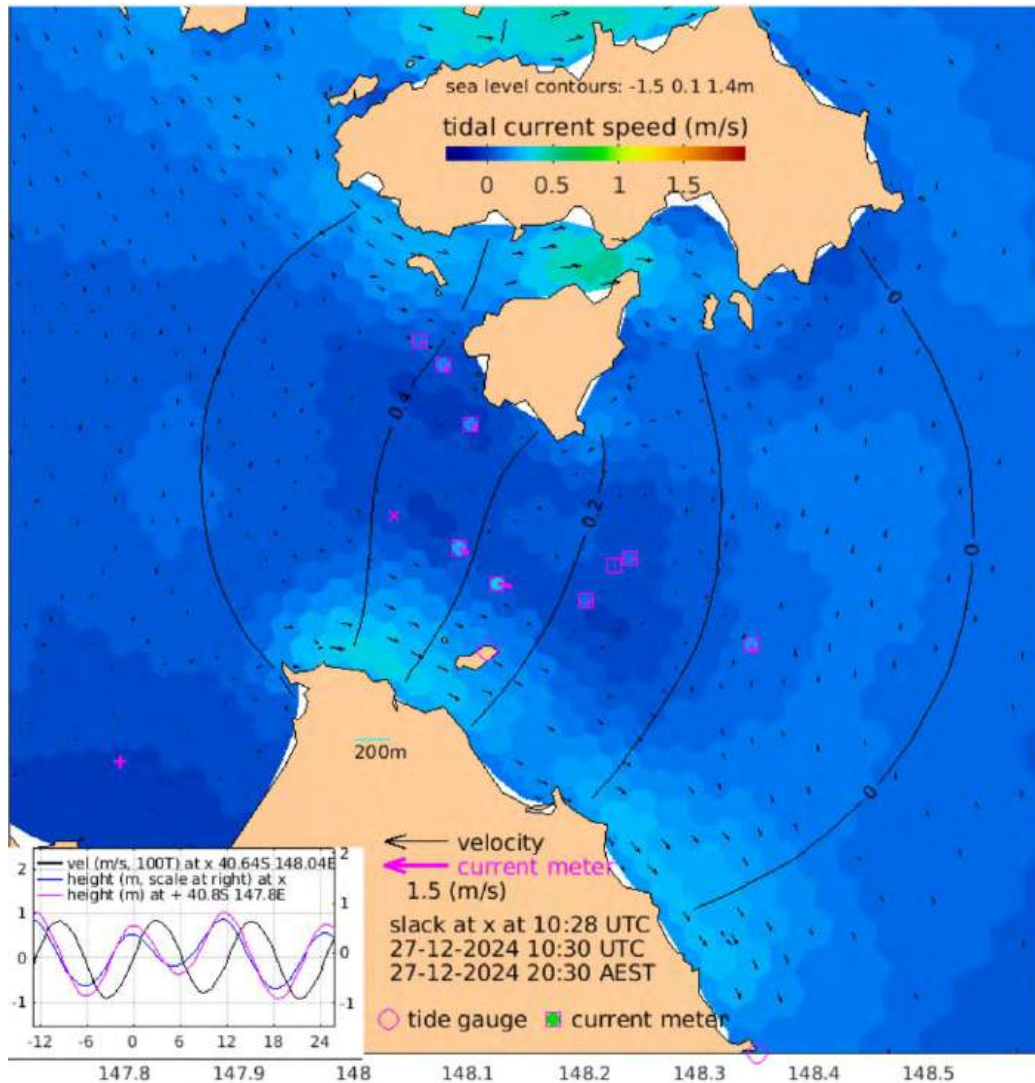
28th December



29th December

IMOS Modelled Tidal flow in Banks Strait.

Note: Bass Strait is dominated by complex tidal flows interspersed with an ocean current influence, especially at either end of the Strait



More information at <https://oceancurrent.aodn.org.au/tides/index.htm>

More information on modelled tidal flows in other parts of the Strait, can be obtained from the link below

Tidal Flow in Banks Strait runs from the east before it becomes slack around 20:30 LT on 27th It then runs from the west. The next slack water is around 02:30 LT on 28th before running from the east.

FRI 27 DEC

LOW

2:51 am

1.34 m

HIGH

8:45 am

3.08 m

LOW

3:29 pm

0.97 m

HIGH

9:41 pm

2.88 m

Tide at Low Head

FRI 27 DEC		SAT 28 DEC		SUN 29 DEC	
LOW	1:02 am 0.39 m	LOW	1:48 am 0.43 m	LOW	2:33 am 0.46 m
HIGH	7:14 am 1.48 m	HIGH	7:57 am 1.52 m	HIGH	8:41 am 1.55 m
LOW	1:50 pm 0.14 m	LOW	2:39 pm 0.08 m	LOW	3:27 pm 0.04 m
HIGH	8:06 pm 1.28 m	HIGH	8:59 pm 1.27 m	HIGH	9:50 pm 1.26 m

Tides at
Swan
Island

SAT 28 DEC

HIGH 6:31 am
1.17 m

LOW 1:53 pm
0.37 m

HIGH 8:10 pm
0.86 m

SUN 29 DEC

LOW 12:36 am
0.66 m

HIGH 7:14 am
1.21 m

LOW 2:35 pm
0.32 m

HIGH 8:58 pm
0.88 m

MON 30 DEC

LOW 1:24 am
0.68 m

HIGH 7:59 am
1.25 m

LOW 3:17 pm
0.27 m

HIGH 9:43 pm
0.91 m

Tides at
Maria
Island

SUN 29 DEC

MON 30 DEC

● TUE 31 DEC

WED 1 JAN

THU 2 JAN

FRI 3 JAN

HIGH 6:43 am
1.46 m

HIGH 7:25 am
1.49 m

LOW 12:20 am
0.98 m

LOW 1:07 am
1.01 m

HIGH 12:35 am
1.03 m

HIGH 1:09 am
1.06 m

LOW 2:59 pm
0.40 m

LOW 3:42 pm
0.35 m

HIGH 8:11 am
1.51 m

HIGH 8:58 am
1.52 m

LOW 2:20 am
1.02 m

LOW 4:07 am
1.01 m

HIGH 10:09 pm
0.97 m

HIGH 11:02 pm
0.99 m

LOW 4:25 pm
0.31 m

LOW 5:07 pm
0.30 m

HIGH 9:47 am
1.50 m

HIGH 10:39 am
1.46 m

LOW 11:47 pm
0.96 m

HIGH 11:53 pm
1.01 m

LOW 5:50 pm
0.29 m

LOW 6:33 pm
0.30 m

Tides in Hobart

Summary

Friday 27th: **Gale Warning current.** Broad Westerly flow at 25-30kt (ave), becoming 30-35 kt (ave) and gusty at times.

Saturday 28th: **Possible Strong wind warning for NE parts.** 20-25kt (ave) W'ly winds turn NW'ly during the morning ahead of a cold front. Winds tend W'ly behind the front, becoming lighter S'ly along the E Tassie coast. Local coastal afternoon NE sea breezes possible. Tricky stuff.

Tuesday 29th: The winds today will depend upon where you are along the E Tassie coast. 5-15kt (ave) NW winds in NE parts become SW-S 10-20kt (ave) in far southern parts. In between, lighter and more variable winds due to the blocking effect of the Tasmanian Central Plateaux under broad W'ly flow. Winds locally stronger and more variable around Tasman Island and lighter and variable in the Derwent especially overnight. Local afternoon coastal sea breezes possible.

Wednesday 30th: N to NE flow over the State ahead of a cold front, fickle in near coastal parts. The wind direction is expected to tend more SW to southerly along the E Tassie coast during the afternoon and evening and tending more variable over SE parts by late evening. Local afternoon coastal sea breezes possible. Winds are expected to be more fickle in the Derwent, especially overnight.

Update your weather/oceanographic and communications information

[Marine & Ocean \(bom.gov.au\)](http://bom.gov.au)

DSS Safe Anchorage and Ports information
[L2H-Safe-Anchorage-and-Ports-FINAL.pdf](#)

The screenshot shows the Bureau of Meteorology website's Marine & Ocean section. At the top, there is a navigation bar with the Australian Government logo, the Bureau of Meteorology name, and links for HOME, ABOUT, MEDIA, CONTACTS, and a search bar. Below this, there are state-specific tabs for NSW, VIC, QLD, WA, SA, TAS, and NT. The main content area is divided into 'Warnings' (with a map of Australia and a link to 'Marine Wind Warning Summary for Tasmania'), 'Forecasts' (listing various coastal and inland water areas), and 'Observations' (providing links to weather data for Hobart, Tasmania, and other locations). A 'National Services' section at the bottom features a grid of service tiles: Marine Wind Maps, Tide Predictions, Sea Temperature & Currents, Interactive Weather and Wave Maps, High Seas Forecasts, Seasonal Ocean Temperature Outlooks, Marine Lite, and Port Air Pressure. A right-hand sidebar contains a list of additional resources like the Marine Weather Knowledge Centre and Boating safety.

Last Bit

- Always keep abreast of the weather via radio sources including official radio skeds, the internet (plenty of weather sites including the Bureau of Meteorology) and never forget the Eye Ball Mk1 method.
- Remember in forecasts and warnings that the average wind speed and the Significant Wave Height (Hsig) is forecast. Be aware that wind gusts can be up to 40% more (in thunderstorms it can up to 150% more) than the average. Wave heights can be higher, up to twice the Hsig and lower than the Hsig. Wave heights can be horrific in situations where wind/swell waves oppose tidal and ocean currents.
- Winds can be locally stronger/lighter in a lot of areas, but locally stronger in Banks Strait and Tasman Island in most wind flows.
- Get/Update your marine weather knowledge here <http://www.bom.gov.au/marine/knowledge-centre/index.shtml>
- Have a great but very safe race