



Launceston to Hobart Yacht Race 2024



Weather Forecast

Issued by Kenn Batt at 0730hr 27/12/2024

Most products used in this briefing have been sourced from the Bureau of Meteorology, Weatherzone and the CSIRO

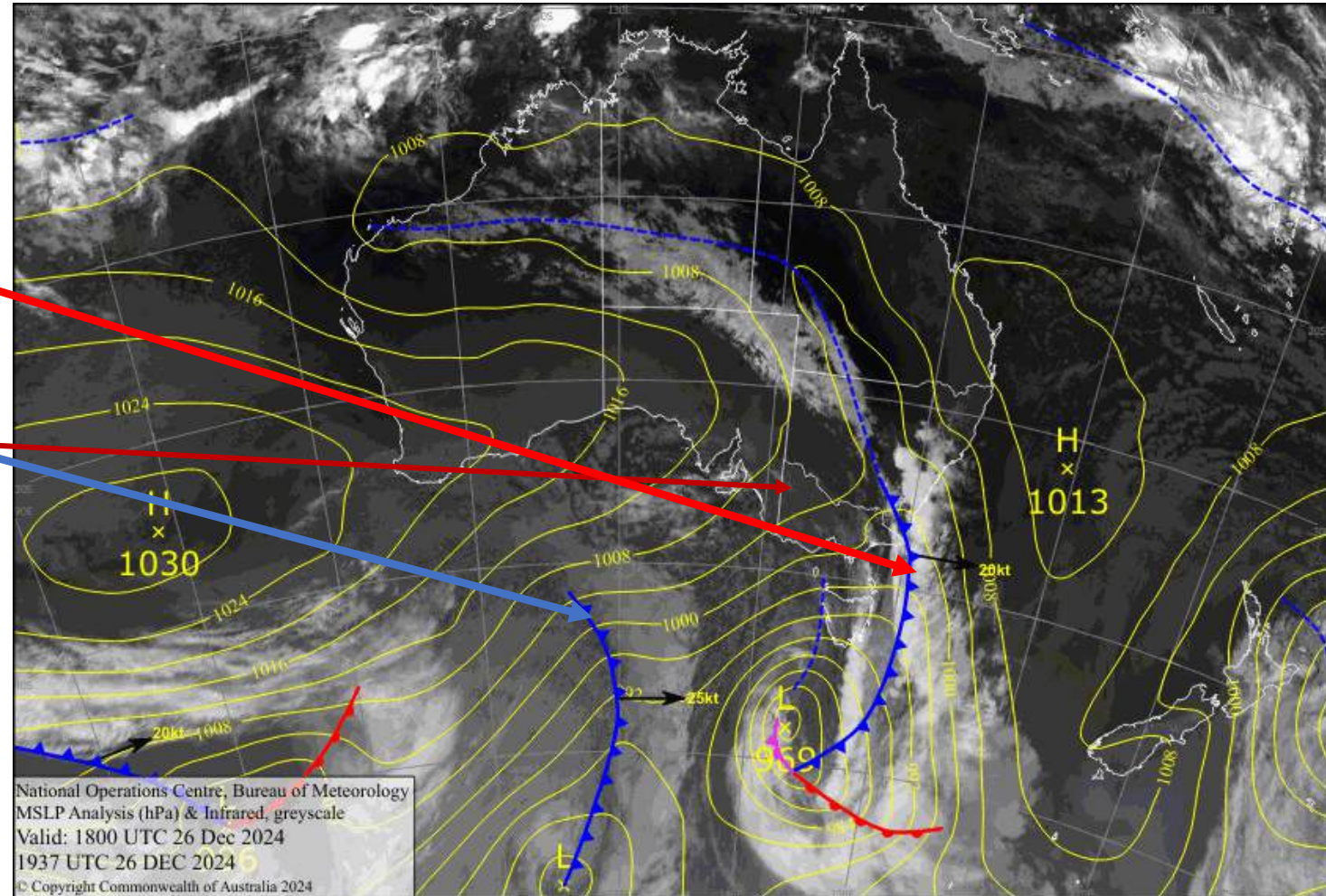


Latest Surface Isobaric Chart

A cold front pushed through Tassie earlier this morning.

Another cold front further to the west of the state.

A high pressure system lying to the SW of Perth, is moving eastward and is extending a ridge ahead of it.



Forecast Charts for next few days

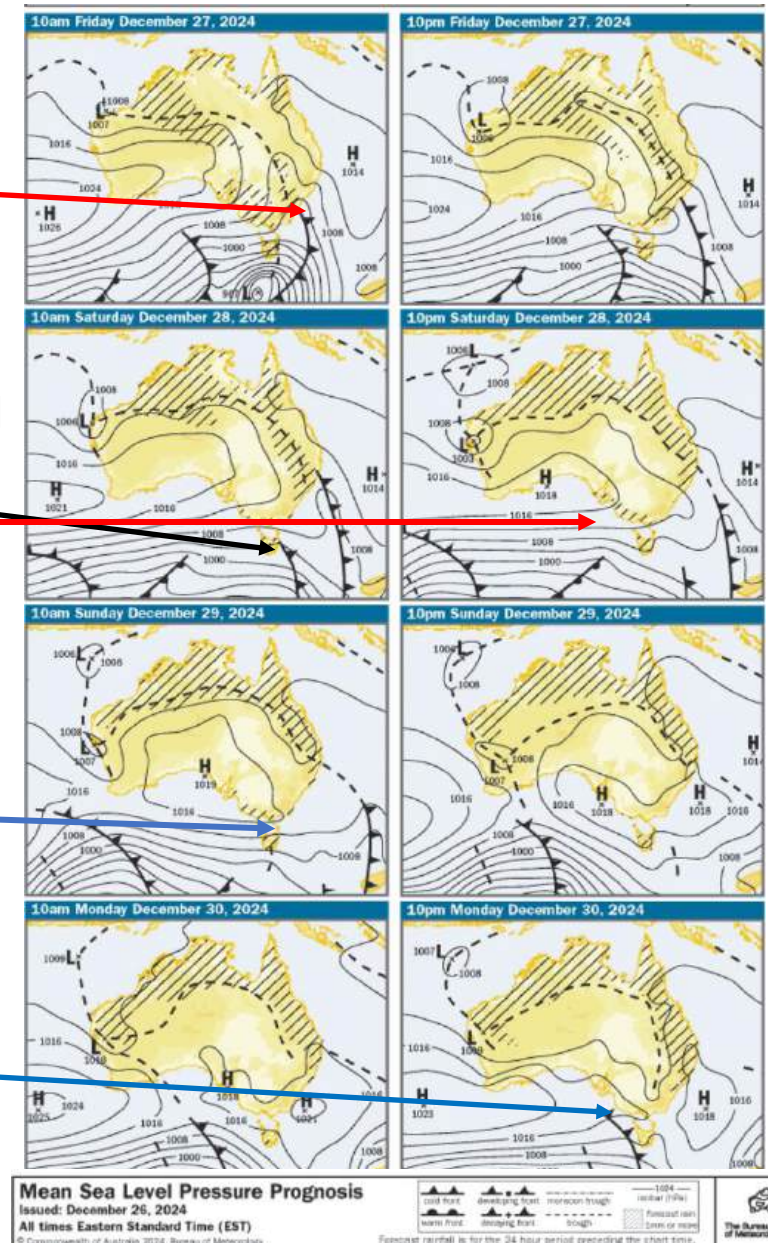
A cold front crossed Tasmania early this morning, bringing a very vigorous westerly change through Bass/Banks Straits.

During Saturday, a cold front/trough of low pressure embedded in the westerly stream is expected cross the E part of the state. A high pressure ridge to the north, then assists to maintain a W-NW airflow over the state

A weak trough is expected to cross the state on Sunday. This will be followed by a ridge of high pressure.

This cold front is expected to move over the state early Tuesday.

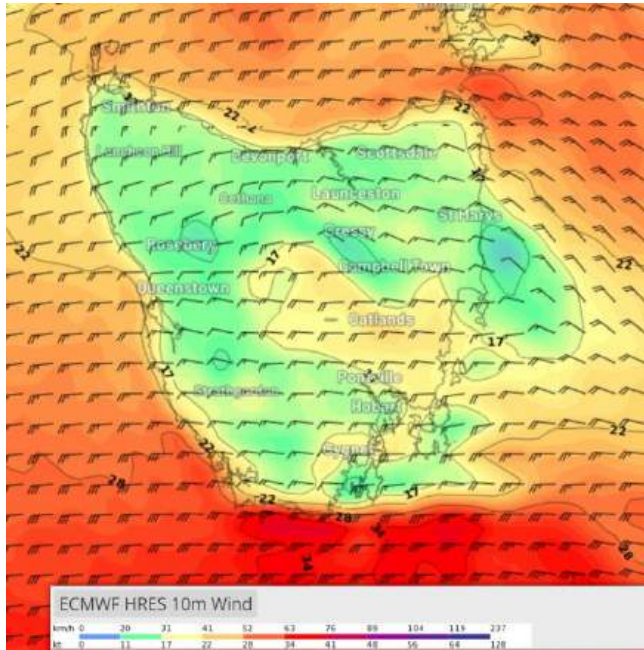
Update timings/intensities from forecasts monitored by you during the race.



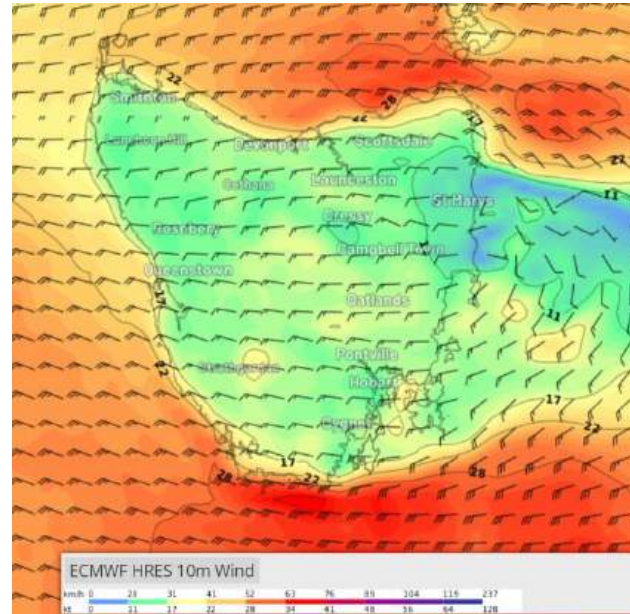
Forecast Winds, etc

- ECMWF Forecast winds below are courtesy of Weatherzone (subscription service) [Weatherzone Layers](#)
- My current model of choice is still the ECMWF model. The other model ACCESS G is also pretty much on the money. Differences exist with timing and intensities of systems (this is pretty normal though).
- This is shaping up to be a tough downwind (Utmost care) race to Banks Strait followed by testy conditions down the Tassie E coast. There may be a number of parking lots at times, particularly in closer to the coast under broad westerly flow. Read this article <https://ryct.org.au/wp-content/uploads/2021/04/25-Tricky-Tassie-Coast-Kenn-Batt-Alasdair-Hainsworth.pdf>. Being constrained by having to go inside Maria Island. Means your positioning offshore is limited unfortunately.
- Check out Windy.com for ECMWF and ACCESS G (and other) models.
- **Update** weather forecasts and **warnings regularly** via the internet and radio sources.
- Timing and intensities of weather systems noted in the briefing may change?

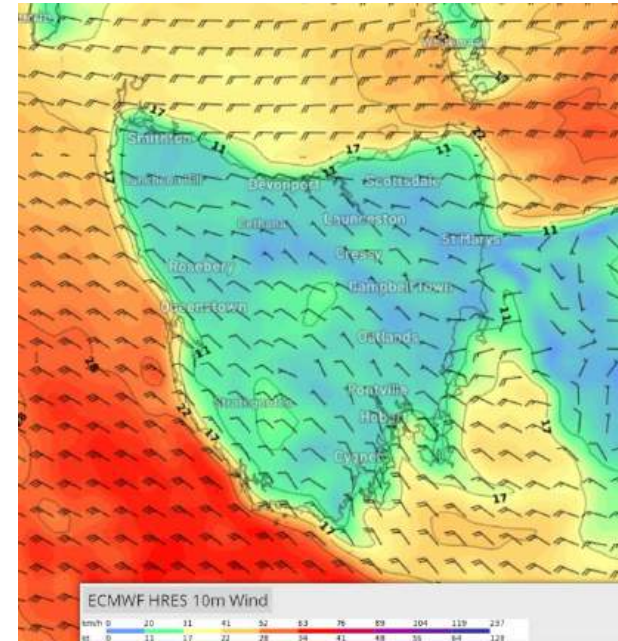
27th December



11am



5pm



11pm

A cold front is expected to be over E Bass Strait this morning. It moves eastward during the day.

Wind: **Gale Wind Warning current.** Broad westerly (NW-SW) flow at 20-30kt (ave), becoming 30-35 kt (ave) and gusty (to 45kt) at times. Winds easing by around 5 to 8kt by late evening.

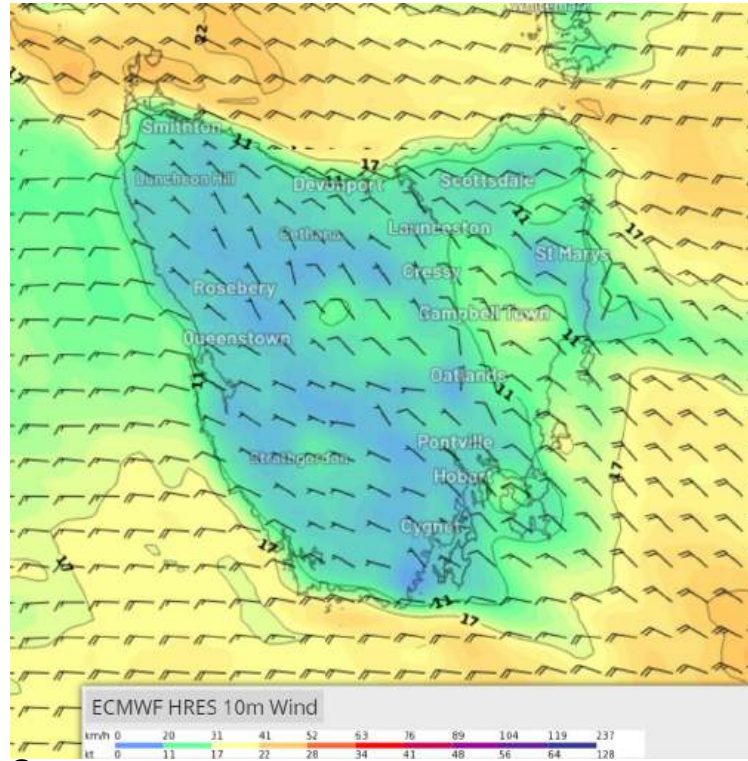
Sea waves: 2.0 to 3.0m (Hsig), higher in gusts/squalls

Swell waves: from W 1.0 to 2.0m (Hsig). A NE-SE'ly 1.0 to 1.5m (Hsig) swell in NE Tassie parts. Becoming S around 1.0 to 1.5m (Hsig) in the S.

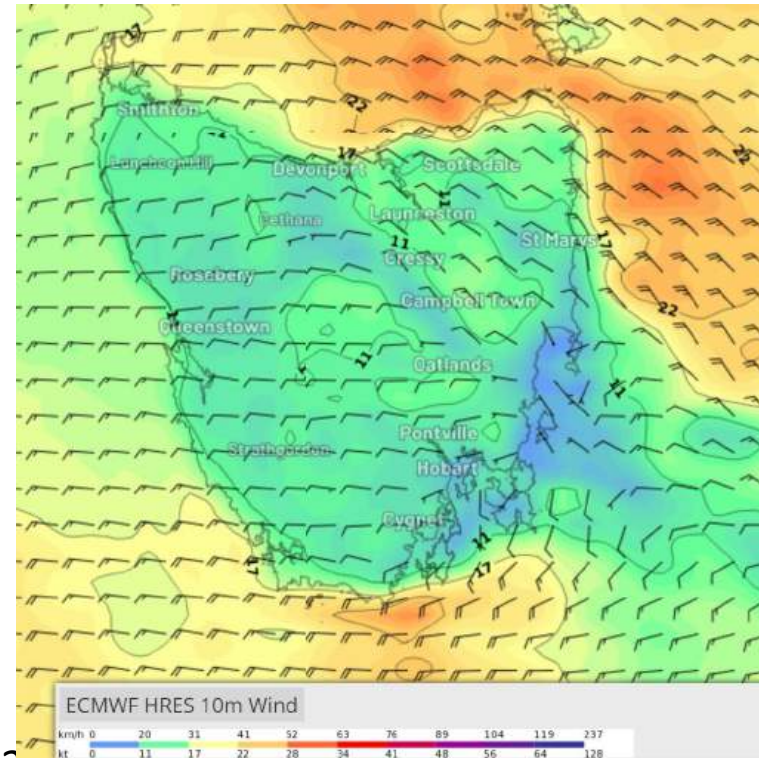
NOTE: Waves can be higher than forecast especially when ocean/tidal currents oppose wind/swell waves

Weather: Cloudy with showers, clearing by late morning.

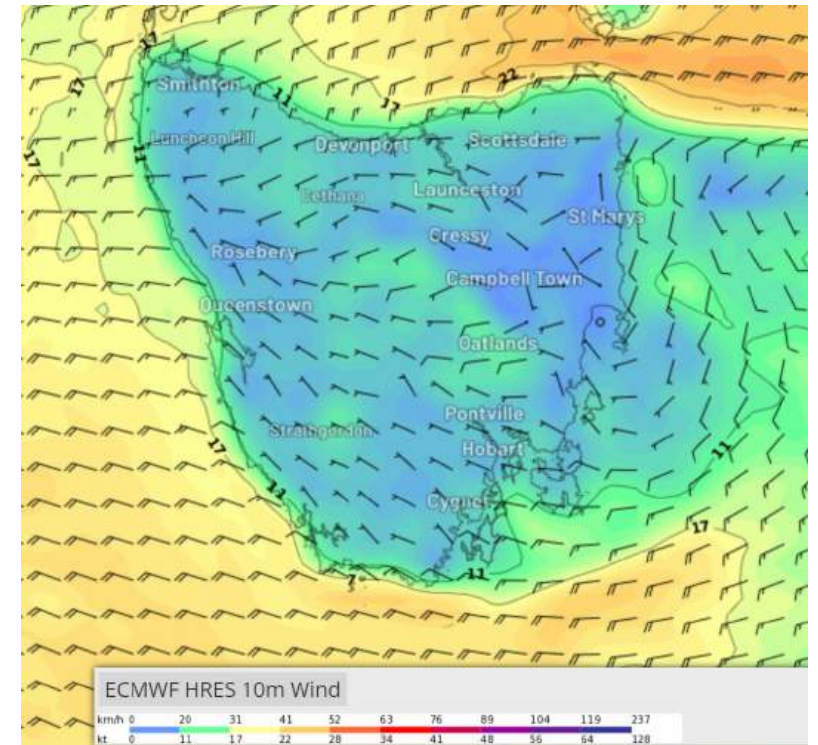
28th December



8am



2pm



11pm

A cold front pushes through Tasmania during Saturday.

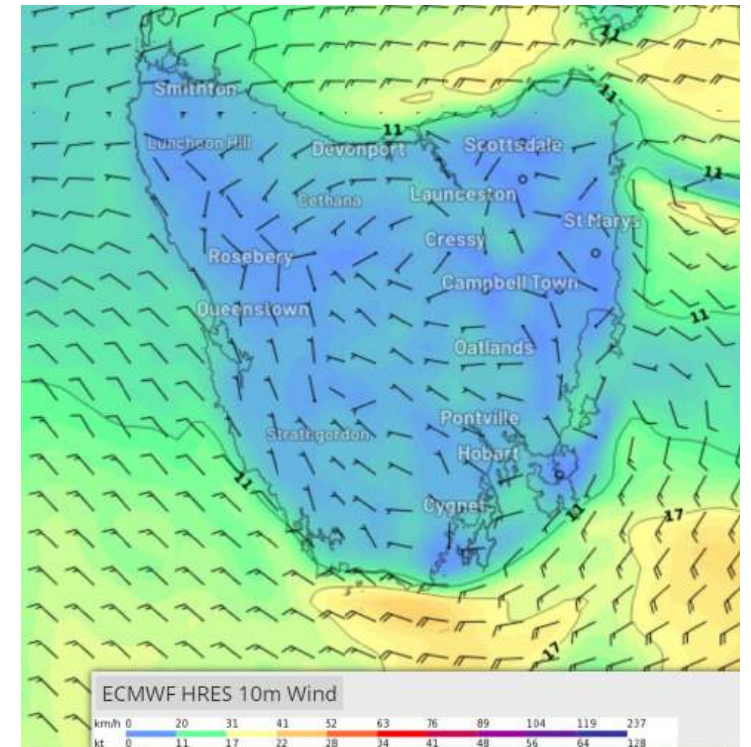
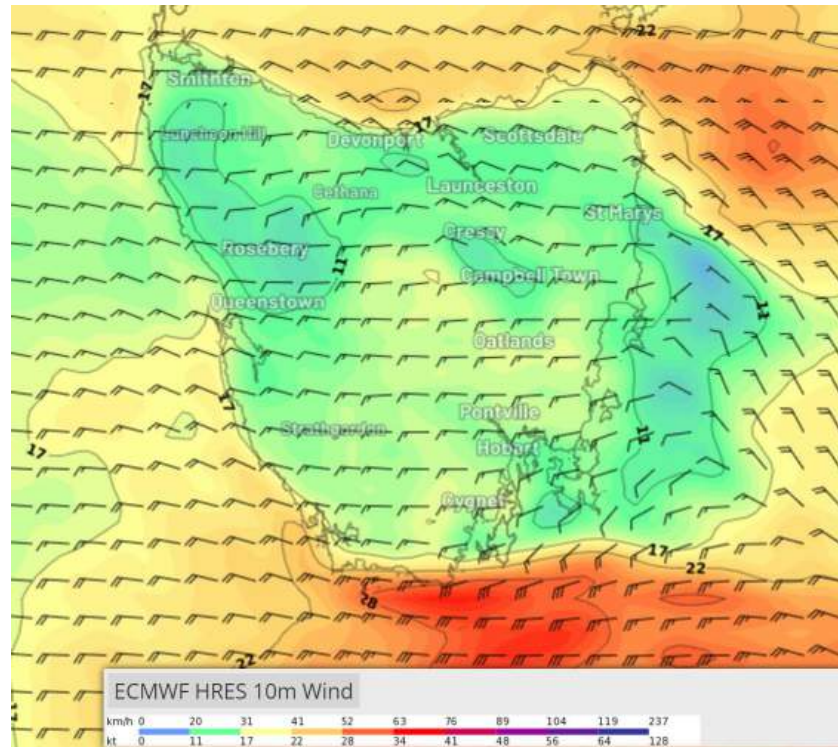
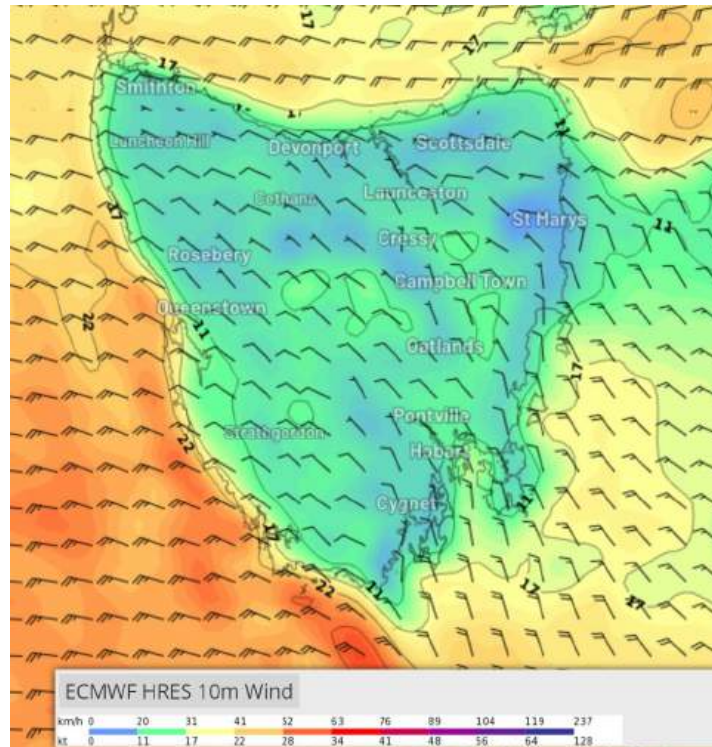
Winds: . **Strong Wind Warning for NE and SE parts of Tassie.** W'ly winds at 20-25kt (ave) at first over NE parts, turning NW'ly 10-20kt (ave) N of about St Helens Pt and also offshore during the morning ahead of the front. **Winds S of St Helens Pt** tending lighter and more variable inshore before a 10-15kt (ave) S'ly change pushes up the E Tassie coast during the afternoon/evening. Winds become light and variable throughout by late evening and overnight. Local coastal afternoon NE sea breezes possible S of St Helens Pt. Tricky stuff. Winds gusty/squally and erratic in heavy showers and thunderstorms.

Sea waves: 2.0 to 2.5m (Hsig) N of St Helens Pt at first, decreasing to around 1.0m (Hsig) S of St Helens Pt and throughout by evening.

Swell waves: E-NE 1 to 2m (Hsig) NE Tassie, tending S'ly around 1.0 to 1.5m (Hsig) further S along the E Tassie coast.

Weather: Moderate chance of showers. Low- moderate risk of a thunderstorm.

29th December



8am
A trough of low pressure moves through the state during the day.

5pm
Winds: The winds today will depend upon where you are along the E Tassie coast. 5-20kt (ave) NW winds in NE parts become NW-SW 10-20kt (ave) in far southern parts. In between, lighter and more variable winds due to the blocking effect of the Tasmanian Central Plateaux under broad W'ly flow. Local afternoon coastal sea breezes between St Helens Pt and Maria Island. A weak S-SE'ly change is expected to move up the E Tassie coast during the afternoon/evening. Tricky stuff.

Winds locally stronger and more variable around Tasman Island and lighter and variable in the Derwent especially overnight.

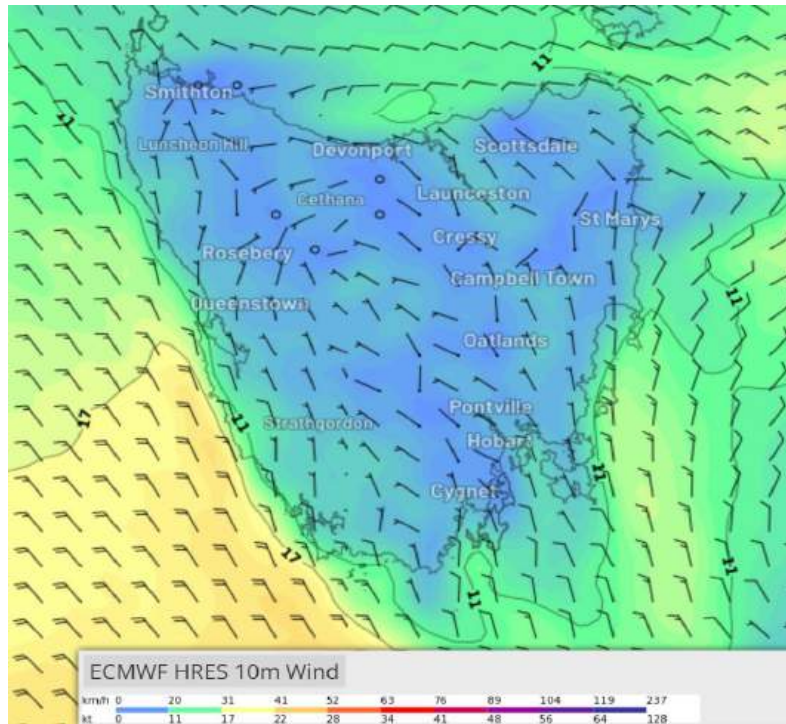
Sea waves: up to 1.5m (Hsig) in N and S parts. Below 1m (Hsig) in between.

Swell waves: from S around 1m (Hsig), tending SW 1.0 to 2.0m (Hsig) in Storm Bay.

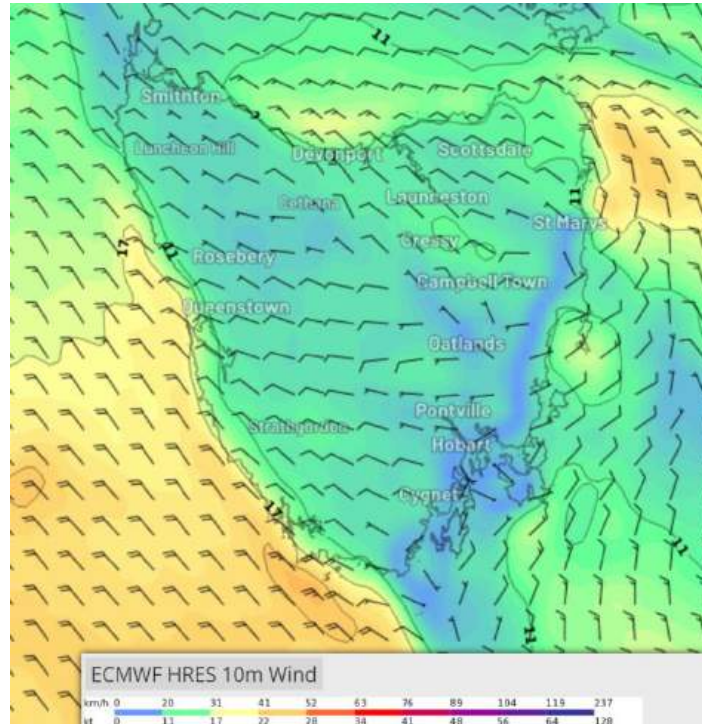
Weather: Partly cloudy. Slight-moderate risk of a shower.

11pm

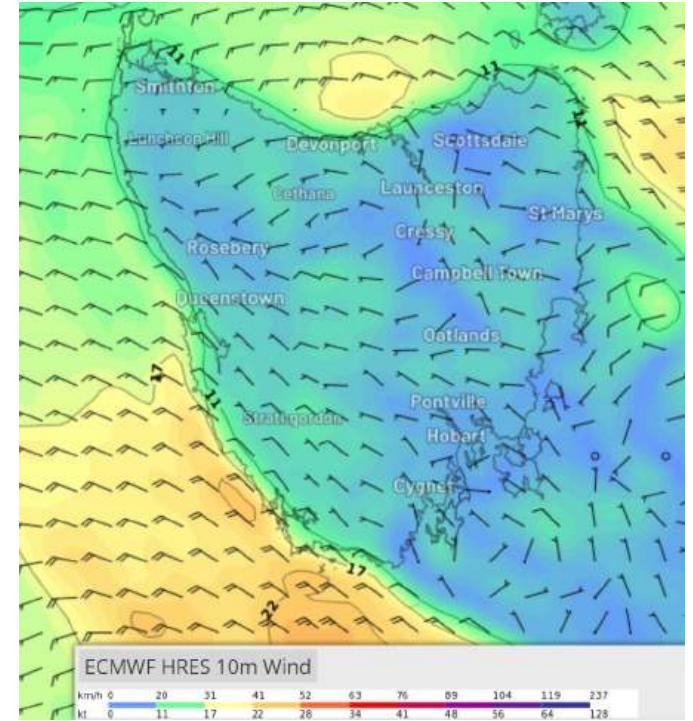
30th December



8am



2pm



11pm

Pre-frontal situation today.

Winds: The winds today are expected to be N-NE 5-10kt (ave) over central and southern parts of the E Tassie coast. Local afternoon coastal sea breezes possible. Winds becoming light and variable into the evening and overnight.

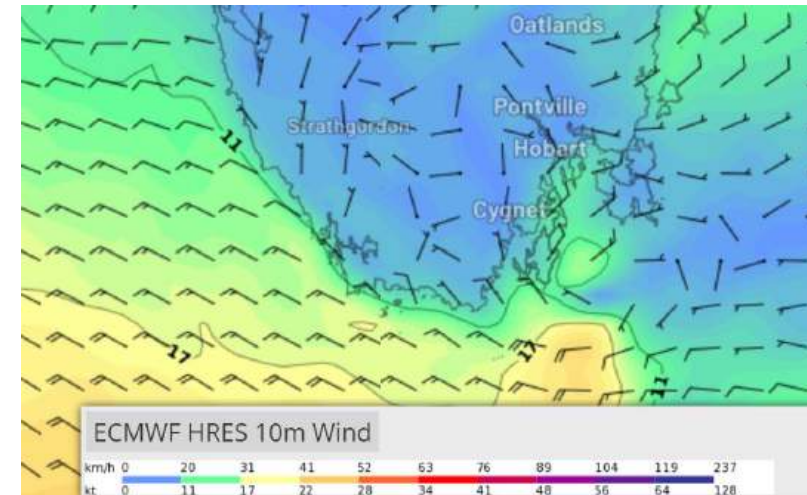
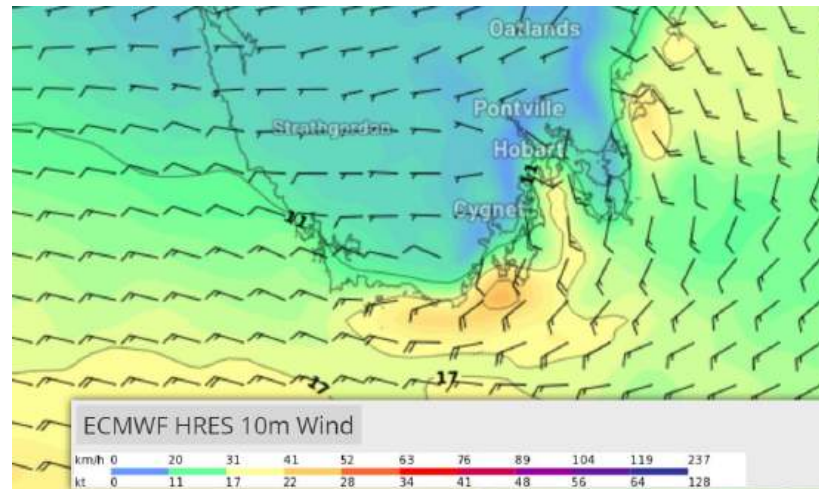
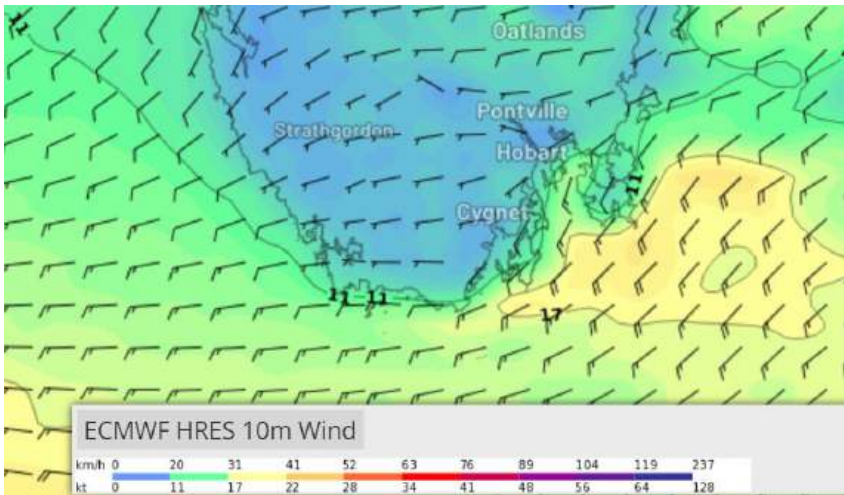
Winds are expected to be very fickle in the Derwent, especially overnight. Very tricky times.

Sea waves: up to 1.0m (Hsig) at times.

Swell waves: from S around 1m (Hsig), tending SW up to 2.0m (Hsig) in Storm Bay.

Weather: Partly cloudy. Slight risk of a shower.

31st December



8am

2pm

11pm

A cold front moves through Tasmania early today.

Winds: Light and variable winds at first will tend SW-SE 10-15kt (ave) behind the front. Winds will become light and variable during the evening. Local afternoon coastal sea breezes possible.

Winds are expected to be locally gusty and more variable in direction during the day in vicinity of Tasman Is. Winds will become very fickle in the Derwent, especially overnight.

Sea waves: up to 1.2m (Hsig)

Swell waves: from S around 1m (Hsig), tending SW up to 2.0m (Hsig) in Storm Bay.

Weather: Partly cloudy. Slight-moderate risk of a shower.

Weather forecasts for selected areas

North Tamar

Forecast for the rest of Friday



Max **18**

Possible shower. Windy.

Chance of any rain: **40%**

Central North area

Partly cloudy. Medium chance of showers this morning. Winds west to northwesterly 35 to 50 km/h decreasing to 25 to 35 km/h in the evening. Daytime maximum temperatures between 17 and 21.

Fire Danger - High

Sun protection recommended from 9:00 am to 5:20 pm, UV Index predicted to reach 10 [Very High]

St Helens

Forecast for the rest of Friday



Max **22**

Windy. Partly cloudy.

Chance of any rain: **20%**

Slight chance of a shower early this morning. Mostly sunny afternoon. Winds west to northwesterly 30 to 45 km/h decreasing to 20 to 30 km/h in the early afternoon.

Fire Danger - High

Sun protection recommended from 9:00 am to 5:20 pm, UV Index predicted to reach 9 [Very High]

Saturday 28 December



Min **12** Max **21**

Shower or two.

Possible rainfall: **0 to 1 mm**

Chance of any rain: **50%**

Partly cloudy. Medium chance of showers. Winds northwesterly 20 to 30 km/h tending westerly 15 to 20 km/h in the evening then becoming light in the late evening.

Sun protection recommended from 8:50 am to 5:10 pm, UV Index predicted to reach 10 [Very High]

Sunday 29 December



Min **11** Max **23**

Partly cloudy.

Chance of any rain: **20%**

Partly cloudy. Slight chance of a shower. Light winds becoming westerly 15 to 25 km/h during the morning then becoming light during the evening.

Sun protection recommended from 8:50 am to 5:30 pm, UV Index predicted to reach 11 [Extreme]

Maria Island

Saturday 28 December



Min 13 Max 20

Shower or two.

Possible rainfall: **0 to 2 mm**

Chance of any rain: **60%** ■■■■■□□□□□

East Coast area

Partly cloudy. Medium chance of showers, most likely in the afternoon and evening. Winds west to northwesterly 15 to 25 km/h tending southeast to southwesterly 15 to 20 km/h in the evening then becoming light in the late evening. Overnight temperatures falling to between 6 and 12 with daytime temperatures reaching between 17 and 21.

Sun protection recommended from 8:50 am to 5:10 pm, UV Index predicted to reach 9 [Very High]

Sunday 29 December



Min 13 Max 22

Cloudy.

Possible rainfall: **0 to 1 mm**

Chance of any rain: **30%** ■■■□□□□□□□

East Coast area

Partly cloudy. Slight chance of a shower in the morning and afternoon. Winds west to northwesterly 15 to 25 km/h tending west to southwesterly during the afternoon then becoming light during the evening. Overnight temperatures falling to between 6 and 11 with daytime temperatures reaching the low 20s.

Sun protection recommended from 9:00 am to 5:30 pm, UV Index predicted to reach 10 [Very High]

Monday 30 December



Min 14 Max 21

Partly cloudy.

Chance of any rain: **20%** ■■□□□□□□□□

East Coast area

Partly cloudy. Slight chance of a shower. Light winds becoming northwest to northeasterly 15 to 25 km/h during the day then tending west to northwesterly during the afternoon. Overnight temperatures falling to between 8 and 13 with daytime temperatures reaching the low to mid 20s.

Sun protection recommended from 8:50 am to 5:30 pm, UV Index predicted to reach 11 [Extreme]

Hobart

Sunday 29 December



Min 12 Max 22

Partly cloudy.

Possible rainfall: **0 to 1 mm**

Chance of any rain: **30%** ■■■□□□□□□□

Hobart area

Partly cloudy. Medium chance of showers in the morning and afternoon. Winds northwesterly 15 to 25 km/h tending westerly 20 to 30 km/h during the day then becoming light during the evening.

Sun protection recommended from 9:00 am to 5:30 pm, UV Index predicted to reach 11 [Extreme]

Monday 30 December



Min 13 Max 25

Partly cloudy.

Possible rainfall: **0 to 1 mm**

Chance of any rain: **30%** ■■■□□□□□□□

Hobart area

Partly cloudy. Slight chance of a shower in the afternoon and evening. Winds northwesterly 15 to 20 km/h tending southeast to southwesterly during the afternoon then becoming light during the evening.

Sun protection recommended from 8:50 am to 5:30 pm, UV Index predicted to reach 11 [Extreme]

Tuesday 31 December



Min 15 Max 23

Possible shower.

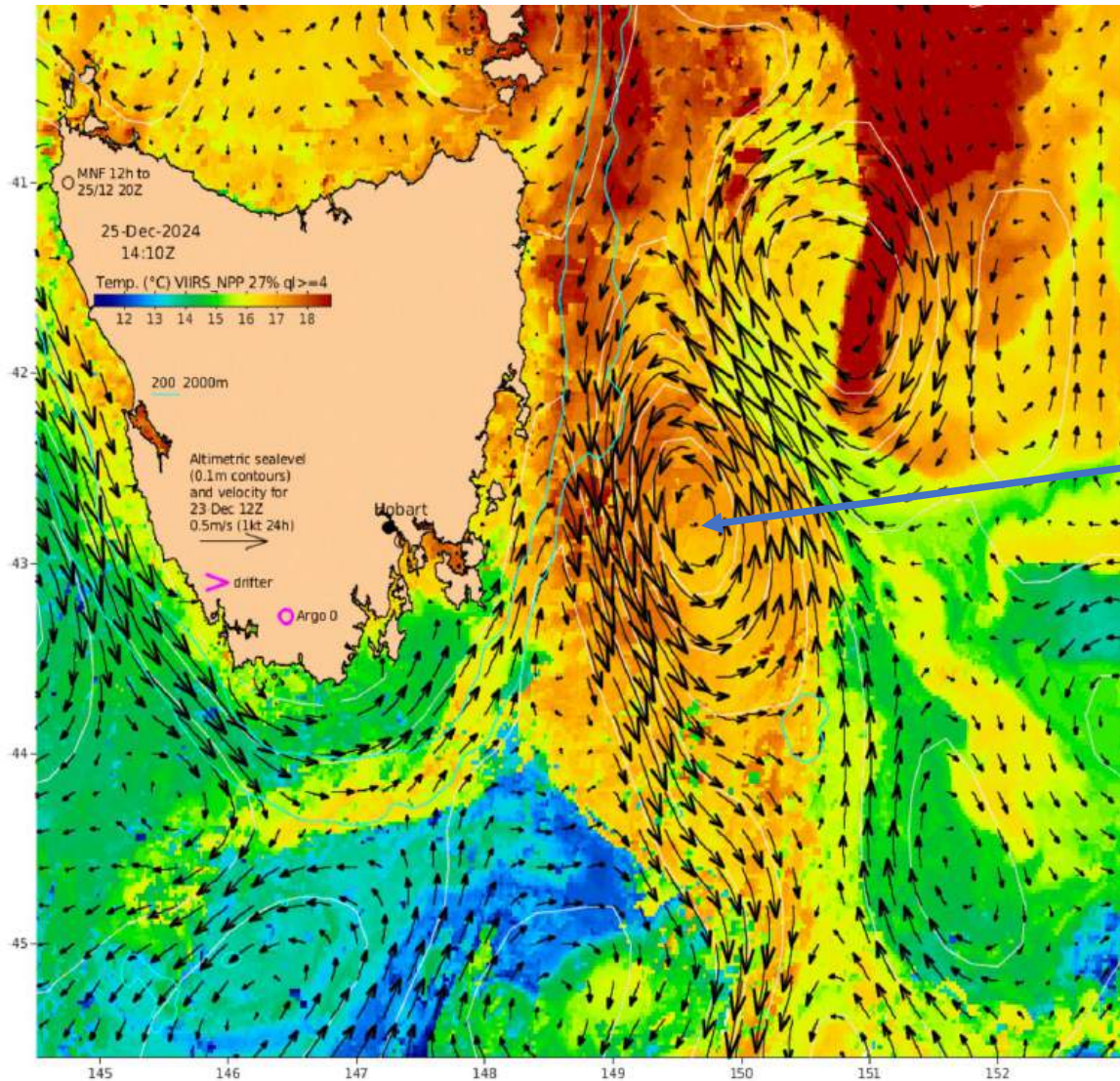
Possible rainfall: **0 to 1 mm**

Chance of any rain: **40%** ■■■■□□□□□□

Hobart area

Partly cloudy. Medium chance of showers, most likely during the morning. Winds west to northwesterly 15 to 20 km/h shifting south to southeasterly 15 to 25 km/h during the day.

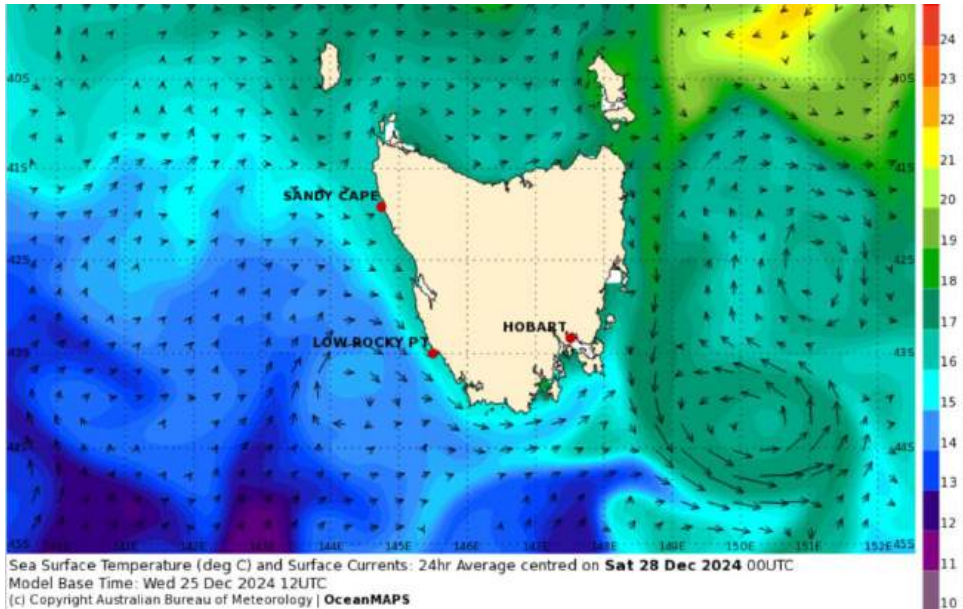
Latest CSIRO SSTs and Ocean Currents



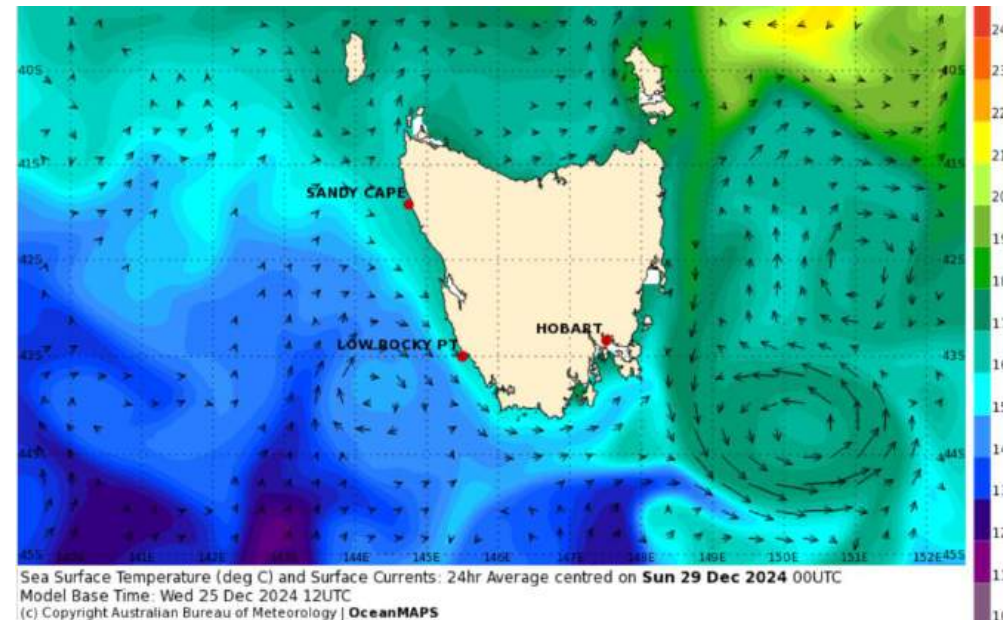
It would appear from the latest CSIRO sea surface temperature analysis that there will be strongest ocean current flow with you at the Shelf and eastward toward the warm eddy. Closer into the coast, there appears to be weak current with you or variable until around Bicheno. South from Bicheno, the ocean current turns against you with speeds up to about 1.5kt at times.

[SST IMOS-OceanCurrent](#)

Bureau of Met Ocean Current prediction Victoria and Tasmania (bom.gov.au)



28th December



29th December

This lower resolution model product from the CSIRO/Bureau of Meteorology for the 28th and 29th December. Is hinting at what the previous slide is indicating. These products can at times be different from what you at sea are observing. Be very vigilant

FRI 27 DEC

LOW

2:51 am

1.34 m

HIGH

8:45 am

3.08 m

LOW

3:29 pm

0.97 m

HIGH

9:41 pm

2.88 m

Tide at Low Head

FRI 27 DEC		SAT 28 DEC		SUN 29 DEC	
LOW	1:02 am 0.39 m	LOW	1:48 am 0.43 m	LOW	2:33 am 0.46 m
HIGH	7:14 am 1.48 m	HIGH	7:57 am 1.52 m	HIGH	8:41 am 1.55 m
LOW	1:50 pm 0.14 m	LOW	2:39 pm 0.08 m	LOW	3:27 pm 0.04 m
HIGH	8:06 pm 1.28 m	HIGH	8:59 pm 1.27 m	HIGH	9:50 pm 1.26 m

Tides at
Swan
Island

SAT 28 DEC

HIGH 6:31 am
1.17 m

LOW 1:53 pm
0.37 m

HIGH 8:10 pm
0.86 m

SUN 29 DEC

LOW 12:36 am
0.66 m

HIGH 7:14 am
1.21 m

LOW 2:35 pm
0.32 m

HIGH 8:58 pm
0.88 m

MON 30 DEC

LOW 1:24 am
0.68 m

HIGH 7:59 am
1.25 m

LOW 3:17 pm
0.27 m

HIGH 9:43 pm
0.91 m

Tides at
Maria
Island

SUN 29 DEC

MON 30 DEC

● TUE 31 DEC

WED 1 JAN

THU 2 JAN

FRI 3 JAN

HIGH 6:43 am
1.46 m

HIGH 7:25 am
1.49 m

LOW 12:20 am
0.98 m

LOW 1:07 am
1.01 m

HIGH 12:35 am
1.03 m

HIGH 1:09 am
1.06 m

LOW 2:59 pm
0.40 m

LOW 3:42 pm
0.35 m

HIGH 8:11 am
1.51 m

HIGH 8:58 am
1.52 m

LOW 2:20 am
1.02 m

LOW 4:07 am
1.01 m

HIGH 10:09 pm
0.97 m

HIGH 11:02 pm
0.99 m

LOW 4:25 pm
0.31 m

LOW 5:07 pm
0.30 m

HIGH 9:47 am
1.50 m

HIGH 10:39 am
1.46 m

LOW 11:47 pm
0.96 m

HIGH 11:53 pm
1.01 m

LOW 5:50 pm
0.29 m

LOW 6:33 pm
0.30 m

Tides in Hobart

Wind Summary

Friday 27th: Gale Warning current. Broad Westerly flow at 20-30kt (ave), becoming 30-35 kt (ave) and gusty (to 45kt) at times.

Saturday 28th: Strong Wind Warning for NE and SE parts of Tassie. W'ly winds at 20-25kt (ave) at first over NE parts, turning NW'ly 10-20kt (ave) N of about St Helens Pt and also offshore during the morning ahead of the front. **Winds S of St Helens Pt** tending lighter and more variable inshore before a 10-15kt (ave) S'ly change pushes up the E Tassie coast during the afternoon/evening. Winds become light and variable throughout by late evening and overnight. Local coastal afternoon NE sea breezes possible S of St Helens Pt. Tricky stuff. Winds gusty/squally and erratic in heavy showers and thunderstorms.

Tuesday 29th: The winds today will depend upon where you are along the E Tassie coast. 5-20kt (ave) NW winds in NE parts become NW-SW 10-20kt (ave) in far southern parts. In between, lighter and more variable winds due to the blocking effect of the Tasmanian Central Plateaux under broad W'ly flow. Local afternoon coastal sea breezes between St Helens Pt and Maria Island. A weak S-SE'ly change is expected to move up the E Tassie coast during the afternoon/evening. Tricky stuff.

Wednesday 30th The winds today are expected to be N-NE 5-10kt (ave) over central and southern parts of the E Tassie coast. Local afternoon coastal sea breezes possible. Winds becoming light and variable into the evening and overnight. Winds are expected to be very fickle in the Derwent, especially overnight. Tricky times.

Thursday 31st: Light and variable winds at first will tend SW-SE 10-15kt (ave) behind the front. Winds will become light and variable during the evening. Local afternoon coastal sea breezes possible.

Winds are expected to be locally gusty and more variable in direction during the day in vicinity of Tasman Is. Winds will become very fickle in the Derwent, especially overnight.

Update your weather/oceanographic and communications information

[Marine & Ocean \(bom.gov.au\)](http://bom.gov.au)

DSS Safe Anchorage and Ports information
[L2H-Safe-Anchorage-and-Ports-FINAL.pdf](#)

The screenshot shows the Bureau of Meteorology website's Marine & Ocean section. At the top, there is a navigation bar with the Australian Government logo, the Bureau of Meteorology name, and links for HOME, ABOUT, MEDIA, CONTACTS, and a search bar. Below this, there are state-specific tabs for NSW, VIC, QLD, WA, SA, TAS, and NT. The main content area is titled 'Marine & Ocean' and features a 'Warnings' section with a map of Australia and a 'Current' section for Tasmania. It is divided into 'Forecasts' and 'Observations' columns. The 'Forecasts' column lists various locations like Denwent Estuary, Frederick Henry and Norfolk Bay, Storm Bay, The Channel, etc. The 'Observations' column includes links for the latest weather for the Hobart area, live wind maps, and coastal observations. To the right, there is a sidebar with links to the Marine Weather Knowledge Centre, boating safety, and other resources. At the bottom, there is a 'National Services' section with buttons for Marine Wind Maps, Tide Predictions, Sea Temperature & Currents, Interactive Weather and Wave Maps, High Seas Forecasts, Seasonal Ocean Temperature Outlooks, Marine Lite, and Port Air Pressure.

Last Bit

- **Always keep abreast of the weather** via radio sources including official radio skeds, the internet (plenty of weather sites including the Bureau of Meteorology) and never forget the Eye Ball Mk1 method. **Forecasts and warnings can be amended/updated at any time.**
- Remember in forecasts and warnings that the average wind speed and the Significant Wave Height (Hsig) is forecast. Be aware that wind gusts can be up to 40% more (in showers up to 100% more and in thunderstorms it can be up to 150% more) than the average. Wave heights can be higher, up to twice the Hsig and lower than the Hsig. Wave heights can be horrific in situations where wind/swell waves oppose tidal and ocean currents (Rogue waves).
- Winds can be locally stronger/lighter in a lot of areas, but locally stronger in Banks Strait and in the vicinity of Tasman Island in most wind flows.
- Get/Update your marine weather knowledge here
<http://www.bom.gov.au/marine/knowledge-centre/index.shtml>
- Have a great but very safe race